
**KODAK CARESTREAM PACS Client Suite
Work Flow Manager**

Version 10.1

DICOM Conformance Statement

Publication # 7H6012

October 4, 2007

Revision History

Revision	Date	Author	Reason for Change
1.0	09/2004		First release for software version 5.2
2.0	11/1/2006		Updated for software version 10.0
3.0	10/4/2007		Updated for software version 10.1

Contents

1	Introduction	1
1.1	About this Document	1
1.2	Important Remarks	1
2	Implementation Model	2
2.1	Application Data Flow Diagrams	2
2.1.1	DICOM Server	3
2.1.2	MPPS Manager	4
2.1.3	Info Router	4
2.2	Functional Definitions of AE	5
2.2.1	DICOM Server	5
2.3	Sequencing of Real World Activities	5
3	AE Specifications	6
3.1	DICOM Server Specifications	6
3.1.1	Association Establishment Policies	8
3.1.1.1	General	8
3.1.1.2	Number of Associations	8
3.1.1.3	Asynchronous Nature	8
3.1.1.4	Implementation Identifying Information	8
3.1.2	Association Initiation by Real World Activity	8
3.1.2.1	Remote System Requests Image Transfer	8
3.1.2.1.1	Associated Real World Activity	8
3.1.2.1.2	Proposed Presentation Contexts	8
3.1.3	Association Acceptance Policy	21
3.1.3.1	Remote System Requests Verification	21
3.1.3.1.1	Associated Real World Activity	21
3.1.3.1.2	Presentation Context Table	21
3.1.3.1.3	Transfer Syntax Selection Policies	21
3.1.3.2	Remote System Requests Object Storage	21
3.1.3.2.1	Associated Real World Activity	21
3.1.3.2.2	Presentation Context Table	21
3.1.3.2.3	Presentation Context Acceptance Criterion	26
3.1.3.2.4	Transfer Syntax Selection Policies	88
3.1.3.3	Remote System Requests Objects Transfer	88
3.1.3.3.1	Associated Real World Activity	88
3.1.3.3.2	Presentation Context Table	89
3.1.3.3.3	Presentation Context Acceptance Criterion	90
3.1.3.3.4	Transfer Syntax Selection Policies	90

3.1.3.4	Remote System Initiates Query Request	90
3.1.3.4.1	Associated Real World Activity	90
3.1.3.4.2	Presentation Context Table	90
3.1.3.4.3	Presentation Context Acceptance Criterion	93
3.1.3.4.4	Transfer Syntax Selection Policies	93
3.1.3.5	Remote System - MPPS Management	93
3.1.3.5.1	Associated Real World Activity	94
3.1.3.5.2	MPPS Manager Behavior	94
3.1.3.5.3	PPS Exception Management	94
3.1.3.5.4	Presentation Context Table	94
3.1.3.5.5	Transfer Syntax Selection Policies	94
3.1.3.6	Remote System - Storage Commitment	95
3.1.3.6.1	Associated Real World Activity	95
3.1.3.6.2	DICOM Server Behavior	95
3.1.3.6.3	DICOM Server Error handler	95
3.1.3.6.4	Presentation Context Table	95
3.1.3.6.5	Transfer Syntax Selection Policies	95
4	Communication Profiles	96
4.1	Supported Communications Stacks (Parts 8, 9)	96
4.2	TCP/IP Stack	96
4.2.1	Physical Media Support	96
4.2.2	Security Profiles	96
5	Extensions, Specialization, Privatization of SOP Classes, and Transfer Syntax	97
5.1	Applicability of DICOM Structured Report SOP Classes	97
5.2	Configuration	97
5.3	AE Title/Presentation Address Mapping	97
5.4	Configurable Parameters	97
6	Support of Extended Character Sets	98

1 Introduction

The KODAK CARESTREAM PACS Client Suite Work Flow Manager (WFM) is an archive for medical imaging related data. WFM stores and handles an unlimited amount of data, and supplies a means of accessing the images using DICOM 3.0 standard protocol.

The WFM communications are based on the DICOM 3.0 standard. This enables the Server to communicate with any DICOM 3.0 compliant products (e.g., scanners, workstations, hardcopy units). The server functions as a DICOM Provider, thus other stations can retrieve and send images to and from the server. Images are transferred in the DICOM 3.0 protocol based on TCP/IP as a transport layer.

1.1 About this Document

This document provides the DICOM Conformance Statement for the WFM implementation of the DICOM 3.0 standard. Conformance Statement defines the subset of options selected from those offered by the DICOM 3.0 standard. Copies of the DICOM 3.0 standard may be obtained by written request or phone, by contacting:

NEMA
Suite 1847
1300 North 17th Street
Rosslyn, VA 22209 USA
Phone: (703) 841-3285

It is assumed that the reader of this document is familiar with the DICOM 3.0 standard and with the terminology and concepts that are used in the standard.

1.2 Important Remarks

The use of this Conformance Statement, in conjunction with the DICOM 3.0 standard, is intended to facilitate communication with the WFM server. However, by itself, it is not sufficient to ensure that inter-operation will be successful. Proceed with caution and be aware of at least the following issues:

It is the user's responsibility to analyze the applications requirements and to design a solution that integrates the server properly with the network. The integration of any DICOM compliant device into an existing network goes beyond the scope of the standard.

Testing the complete range of possible interactions between the server and other devices should not be overlooked by the user. This includes the accuracy of the image data once it has crossed the interface between the server and the other device, and the suitability of the image data for the intended applications. Such a validation is required before any clinical use is performed.

Evolution of the DICOM 3.0 standard may require changes to devices which have implemented it, such as the WFM server. The user should ensure that other DICOM products in the network are also updated as the standard evolves.

If the user encounters unspecified private data elements while parsing a data set coming from the server, the user is well advised to ignore those data elements (per the DICOM 3.0 standard). Unspecified private data element information is subject to change without notice.

2 Implementation Model

WFM uses the DICOM protocol to enable the following functions:

- Receiving of images for storage in its archive
- Retrieving images from its archive
- Answering queries on data stored in its archive

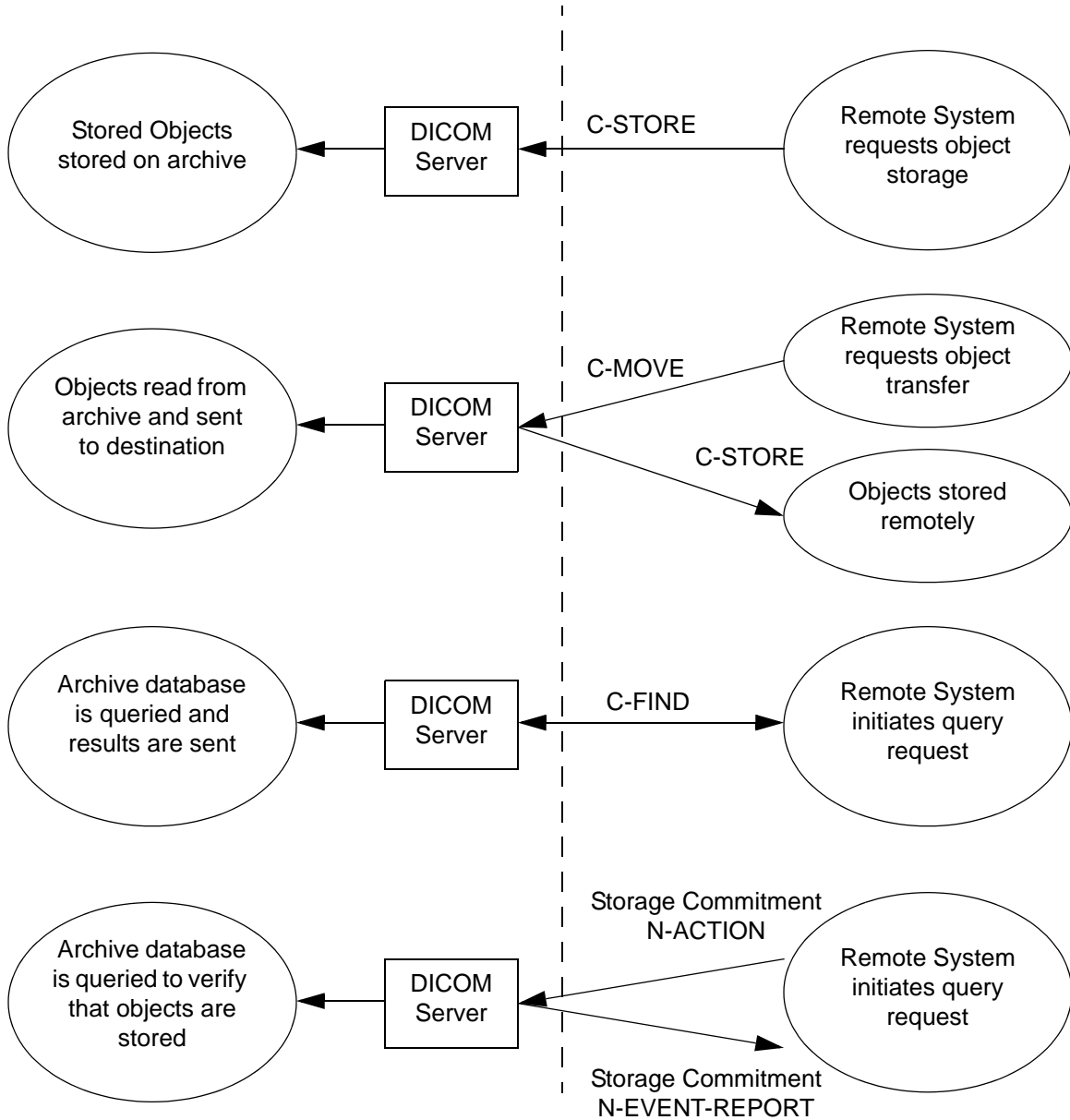
2.1 Application Data Flow Diagrams

The WFM system implements and provides DICOM services using the following Application Entities:

- DICOM Server
- MPPS Manager
- Info Router

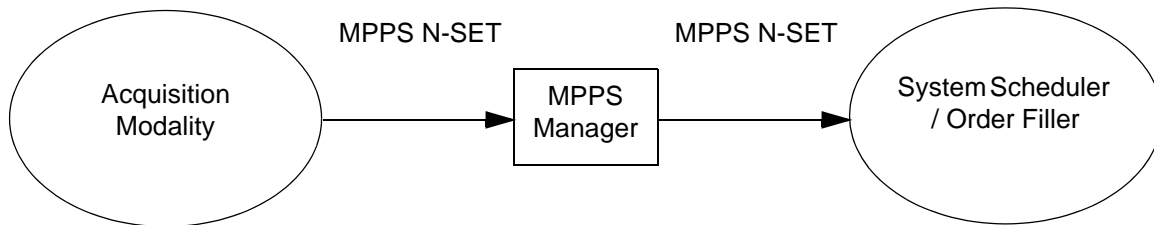
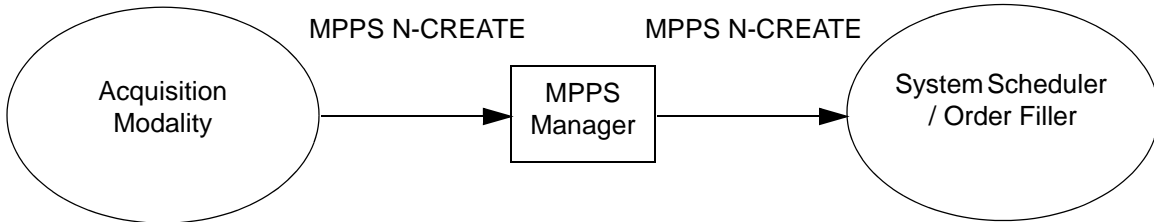
2.1.1 DICOM Server

This Application Entity (AE) serves as the interface to the database of the stored images on the archive. This Service Class Provider (SCP) provides DICOM Storage and Query-Retrieve services. The following shows an illustration of the DICOM Server activities.



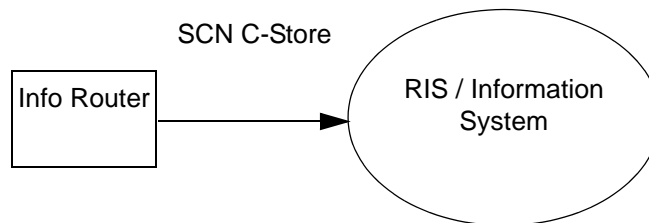
2.1.2 MPPS Manager

This Application Entity (AE) serves as the interface between the modality and the order filler. This Service Class Provider/User (SCP, SCU) provides DICOM MPPS-N-CREATE and MPPS-N-SET services. The following shows an illustration of the DICOM Server activities.



2.1.3 Info Router

This application entity (AE) serves as a Study Content Notification (SCN) client. The following shows an illustration of the DICOM Server activity.



2.2 Functional Definitions of AE

2.2.1 DICOM Server

The DICOM Server waits for another application to connect at the presentation address configured for its AE title. The DICOM Server will accept associations with Presentation Contexts for Service Object Pair (SOP) classes of the Storage, Query-Retrieve (C-MOVE and C-FIND only) and Verification Service Classes.

When performing a Storage Service Class, the DICOM Server will receive images and store them into its archive.

When performing Query-Retrieve Service Class (C-FIND), the DICOM Server will query its archive database according to the request's parameters, and will send the results to the issuer.

When performing Query-Retrieve Service Class (C-MOVE), the DICOM Server will issue a C-STORE (to the target AE) for every image in the request.

2.3 Sequencing of Real World Activities

Not applicable.

3 AE Specifications

3.1 DICOM Server Specifications

The DICOM Server provides Standard Conformance to the following DICOM V3.0 SOP Classes as SCP:

Table 1: DICOM V3.0 SOP Classes as SCP

SOP Class Name	SOP Class UID
Verification	1.2.840.10008.1.1
CT Image Storage	1.2.840.10008.5.1.4.1.1.2
MR Image Storage	1.2.840.10008.5.1.4.1.1.4
Nuclear Medicine Image Storage	1.2.840.10008.5.1.4.1.1.20
Computed Radiography Image Storage	1.2.840.10008.5.1.4.1.1.1
Secondary Capture Image Storage	1.2.840.10008.5.1.4.1.1.7
Ultrasound Multi-Frame Image Storage (retired)	1.2.840.10008.5.1.4.1.1.3
Ultrasound Multi-Frame Image Storage	1.2.840.10008.5.1.4.1.1.3.1
Ultrasound Image Storage (retired)	1.2.840.10008.5.1.4.1.1.6
Ultrasound Image Storage	1.2.840.10008.5.1.4.1.1.6.1
X-Ray Angiographic Image Storage	1.2.840.10008.5.1.4.1.1.12.1
X-Ray Radiofluoroscopic Image Storage	1.2.840.10008.5.1.4.1.1.12.2
Digital X-Ray Image Storage For Presentation	1.2.840.10008.5.1.4.1.1.1.1
Digital X-Ray Image Storage For Processing	1.2.840.10008.5.1.4.1.1.1.1.1
Digital Mammography X-Ray Image Storage For Presentation	1.2.840.10008.5.1.4.1.1.1.2
Digital Mammography X-Ray Image Storage For Processing	1.2.840.10008.5.1.4.1.1.1.2.1
Digital Intra Oral X-Ray Image Storage For Presentation	1.2.840.10008.5.1.4.1.1.1.3
Digital Intra Oral X-Ray Image Storage For Processing	1.2.840.10008.5.1.4.1.1.1.3.1
RT Image Storage	1.2.840.10008.5.1.4.1.1.481.1
VL Endoscopic Image Storage	1.2.840.10008.5.1.4.1.1.77.1.1
VL Microscopic Image Storage	1.2.840.10008.5.1.4.1.1.77.1.2
VL Slide Coordinates Microscopic Image Storage	1.2.840.10008.5.1.4.1.1.77.1.3
VL Photographic Image Storage	1.2.840.10008.5.1.4.1.1.77.1.4
X-Ray Angiographic Bi-Plane Image Storage	1.2.840.10008.5.1.4.1.1.12.3
Positron Emission Tomography	1.2.840.10008.5.1.4.1.1.128
Patient Root Q/R Information Model - FIND	1.2.840.10008.5.1.4.1.2.1.1
Patient Root Q/R Information Model - MOVE	1.2.840.10008.5.1.4.1.2.1.2
Study Root Q/R Information Model - FIND	1.2.840.10008.5.1.4.1.2.2.1
Study Root Q/R Information Model - MOVE	1.2.840.10008.5.1.4.1.2.2.2
Storage Commitment Push Model SOP Class	1.2.840.10008.1.20.1
Modality Performed Procedure Step SOP Class	1.2.840.10008.3.1.2.3.3
Key Object Selection Document	1.2.840.10008.5.1.4.1.1.88.59

Table 1: DICOM V3.0 SOP Classes as SCP (continued)

SOP Class Name	SOP Class UID
RT Dose Storage	1.2.840.10008.5.1.4.1.1.481.2
RT Structure Set Storage	1.2.840.10008.5.1.4.1.1.481.3
RT Beams Treatment Record Storage	1.2.840.10008.5.1.4.1.1.481.4
RT Plan Storage	1.2.840.10008.5.1.4.1.1.481.5
RT Brachy Treatment Record Storage	1.2.840.10008.5.1.4.1.1.481.6
RT Treatment Summary Record Storage	1.2.840.10008.5.1.4.1.1.481.7
Hardcopy Grayscale Image Storage	1.2.840.10008.5.1.1.29
Hardcopy Color Image Storage	1.2.840.10008.5.1.1.30
Multi-Frame Grayscale Byte Secondary Capture Image Storage	1.2.840.10008.5.1.4.1.1.7.2
Multi-Frame Grayscale Word Secondary Capture Image Storage	1.2.840.10008.5.1.4.1.1.7.3
Visible Light Image Storage (Retired)	1.2.840.10008.5.1.4.1.1.77.1
Visible Light Multi-Frame Image Storage (Retired)	1.2.840.10008.5.1.4.1.1.77.2
Nuclear Medicine Image Storage (Retired)	1.2.840.10008.5.1.4.1.1.5
Basic Text SR Storage	1.2.840.10008.5.1.4.1.1.88.11
Enhanced SR Storage	1.2.840.10008.5.1.4.1.1.88.22
Comprehensive SR Storage	1.2.840.10008.5.1.4.1.1.88.33
Stand-alone Overlay Storage	1.2.840.10008.5.1.4.1.1.8
Stand-alone Curve Storage	1.2.840.10008.5.1.4.1.1.9
Stand-alone Modality LUT Storage	1.2.840.10008.5.1.4.1.1.10
Stand-alone VOI LUT Storage	1.2.840.10008.5.1.4.1.1.11
12-lead ECG Waveform Storage	1.2.840.10008.5.1.4.1.1.9.1.1
General ECG Waveform Storage	1.2.840.10008.5.1.4.1.1.9.1.2
Ambulatory ECG Waveform Storage	1.2.840.10008.5.1.4.1.1.9.1.3
Hemodynamic Waveform Storage	1.2.840.10008.5.1.4.1.1.9.2.1
Cardiac Electrophysiology Waveform Storage	1.2.840.10008.5.1.4.1.1.9.3.1
Basic Voice Audio Waveform Storage	1.2.840.10008.5.1.4.1.1.9.4.1
Multi-frame Single Bit Secondary Capture Image Storage	1.2.840.10008.5.1.4.1.1.7.1
Multi-frame True Color Secondary Capture Image Storage	1.2.840.10008.5.1.4.1.1.7.4
MR Spectroscopy Storage	1.2.840.10008.5.1.4.1.1.4.2
Enhanced MR Image Storage	1.2.840.10008.5.1.4.1.1.4.1
Raw Data Storage	1.2.840.10008.5.1.4.1.1.66
Presentation LUT	1.2.840.10008.5.1.4.1.1.23
Mammography CAD SR	1.2.840.10008.5.1.4.1.1.88.50
Chest CAD SR	1.2.840.10008.5.1.4.1.1.88.65
Grayscale Softcopy Presentation State	1.2.840.10008.5.1.4.1.1.11.1
Study Content Notification	1.2.840.10008.1.9
Stored Print Storage	1.2.840.10008.5.1.1.27

3.1.1 Association Establishment Policies

3.1.1.1 General

The maximum Protocol Data Unit (PDU) size which the DICOM Server will use is 32K bytes.

3.1.1.2 Number of Associations

The number of simultaneous associations which will be accepted by the DICOM Server is limited only by the kernel parameters of the underlying TCP/IP implementation. The DICOM Server will spawn a new process for each connection request it receives. Therefore, the DICOM Server can have multiple simultaneous connections, and there are no inherent limitations on the number of simultaneous associations which the Application Entity represented by the DICOM Server can maintain.

3.1.1.3 Asynchronous Nature

The DICOM Server will only allow a single outstanding operation on an association. Therefore the DICOM Server will not perform asynchronous operations window negotiation.

3.1.1.4 Implementation Identifying Information

Image processing and management systems provide a single Implementation Class Unique Identifier (UID) which is 1.2.840.113704.7.0.2. The Application Context Name is 1.2.840.10008.3.1.1.1.

3.1.2 Association Initiation by Real World Activity

The DICOM Server initiates associations as part of an execution of a C-MOVE command.

3.1.2.1 Remote System Requests Image Transfer

A Remote System requests image transfer from the DICOM Server by sending C-MOVE Command.

3.1.2.1.1 Associated Real World Activity

The Real World activity associated with the C-MOVE command is retrieval of images from the disk and storage of the images to a Remote System using a C-STORE command over one or more associations. The number of maximum C-STORE associations is limited by configuration.

3.1.2.1.2 Proposed Presentation Contexts

All the Presentation Contexts shown in [Table 2](#) are proposed by the DICOM Server:

For each of the specified Presentation Contexts it is possible (needs special configuration) to add the following transfer syntax:

JPEG Lossless configuration:

- JPEG Lossless, Non-Hierarchical (Process 14) - 1.2.840.10008.1.2.4.57
- JPEG Lossless, Non-Hierarchical, First-Order Prediction (Process 14 [Selection Value 1]) - 1.2.840.10008.1.2.4.70

JPEG Lossy configuration:

- JPEG Baseline (Process 1) 1.2.840.10008.1.2.4.50
- JPEG Extended (Process 2 & 4) 1.2.840.10008.1.2.4.51

NOTE: The above transfer syntaxes are proposed in separate presentation contexts.

JPEG 2000 Configuration

- JPEG 2000 Image Compression (Lossless only) - 1.2.840.10008.1.2.4.90
- PEG 2000 Image Compression 1.2.840.10008.1.2.4.91

Table 2: Proposed Presentation Contexts for the DICOM Server

Abstract Syntax		Transfer Syntax		Role	Ext. Neg.
Name	UID	Name	UID		
CT Image	1.2.840.10008.5.1.4.1.1.2	DICOM Implicit VR Little Endian	1.2.840.10008.1.2	SCU	None
		DICOM Explicit VR Little Endian	1.2.840.10008.1.2.1		
		DICOM Explicit VR Big Endian	1.2.840.10008.1.2.2		
MR Image	1.2.840.10008.5.1.4.1.1.4	DICOM Implicit VR Little Endian	1.2.840.10008.1.2	SCU	None
		DICOM Explicit VR Little Endian	1.2.840.10008.1.2.1		
		DICOM Explicit VR Big Endian	1.2.840.10008.1.2.2		
CR Image	1.2.840.10008.5.1.4.1.1.1	DICOM Implicit VR Little Endian	1.2.840.10008.1.2	SCU	None
		DICOM Explicit VR Little Endian	1.2.840.10008.1.2.1		
		DICOM Explicit VR Big Endian	1.2.840.10008.1.2.2		
NM Image	1.2.840.10008.5.1.4.1.1.20	DICOM Implicit VR Little Endian	1.2.840.10008.1.2	SCU	None
		DICOM Explicit VR Little Endian	1.2.840.10008.1.2.1		
		DICOM Explicit VR Big Endian	1.2.840.10008.1.2.2		
SC Image	1.2.840.10008.5.1.4.1.1.7	DICOM Implicit VR Little Endian	1.2.840.10008.1.2	SCU	None
		DICOM Explicit VR Little Endian	1.2.840.10008.1.2.1		
		DICOM Explicit VR Big Endian	1.2.840.10008.1.2.2		
XA Image	1.2.840.10008.5.1.4.1.1.12.1	DICOM Implicit VR Little Endian	1.2.840.10008.1.2	SCU	None
		DICOM Explicit VR Little Endian	1.2.840.10008.1.2.1		
		DICOM Explicit VR Big Endian	1.2.840.10008.1.2.2		

Table 2: Proposed Presentation Contexts for the DICOM Server (continued)

Abstract Syntax		Transfer Syntax		Role	Ext. Neg.
Name	UID	Name	UID		
RF Image	1.2.840.10008.5.1.4.1.1.12.2	DICOM Implicit VR Little Endian	1.2.840.10008.1.2	SCU	None
		DICOM Explicit VR Little Endian	1.2.840.10008.1.2.1		
		DICOM Explicit VR Big Endian	1.2.840.10008.1.2.2		
US Image	1.2.840.10008.5.1.4.1.1.6.1	DICOM Implicit VR Little Endian	1.2.840.10008.1.2	SCU	None
		DICOM Explicit VR Little Endian	1.2.840.10008.1.2.1		
		DICOM Explicit VR Big Endian	1.2.840.10008.1.2.2		
US Image(Retired)	1.2.840.10008.5.1.4.1.1.6	DICOM Implicit VR Little Endian	1.2.840.10008.1.2	SCU	None
		DICOM Explicit VR Little Endian	1.2.840.10008.1.2.1		
		DICOM Explicit VR Big Endian	1.2.840.10008.1.2.2		
DX Image for Presentation	1.2.840.10008.5.1.4.1.1.1.1	DICOM Implicit VR Little Endian	1.2.840.10008.1.2	SCU	None
		DICOM Explicit VR Little Endian	1.2.840.10008.1.2.1		
		DICOM Explicit VR Big Endian	1.2.840.10008.1.2.2		
DX Image for Processing	1.2.840.10008.5.1.4.1.1.1.1.1	DICOM Implicit VR Little Endian	1.2.840.10008.1.2	SCU	None
		DICOM Explicit VR Little Endian	1.2.840.10008.1.2.1		
		DICOM Explicit VR Big Endian	1.2.840.10008.1.2.2		
MG Image for Presentation	1.2.840.10008.5.1.4.1.1.1.2	DICOM Implicit VR Little Endian	1.2.840.10008.1.2	SCU	None
		DICOM Explicit VR Little Endian	1.2.840.10008.1.2.1		
		DICOM Explicit VR Big Endian	1.2.840.10008.1.2.2		
MG Image for Processing	1.2.840.10008.5.1.4.1.1.1.2.1	DICOM Implicit VR Little Endian	1.2.840.10008.1.2	SCU	None
		DICOM Explicit VR Little Endian	1.2.840.10008.1.2.1		
		DICOM Explicit VR Big Endian	1.2.840.10008.1.2.2		

Table 2: Proposed Presentation Contexts for the DICOM Server (continued)

Abstract Syntax		Transfer Syntax		Role	Ext. Neg.
Name	UID	Name	UID		
IO Image for Presentation	1.2.840.10008.5.1.4.1.1.1.3	DICOM Implicit VR Little Endian	1.2.840.10008.1.2	SCU	None
		DICOM Explicit VR Little Endian	1.2.840.10008.1.2.1		
		DICOM Explicit VR Big Endian	1.2.840.10008.1.2.2		
IO Image for Processing	1.2.840.10008.5.1.4.1.1.1.3.1	DICOM Implicit VR Little Endian	1.2.840.10008.1.2	SCU	None
		DICOM Explicit VR Little Endian	1.2.840.10008.1.2.1		
		DICOM Explicit VR Big Endian	1.2.840.10008.1.2.2		
RT Image Storage	1.2.840.10008.5.1.4.1.1.481.1	DICOM Implicit VR Little Endian	1.2.840.10008.1.2	SCU	None
		DICOM Explicit VR Little Endian	1.2.840.10008.1.2.1		
		DICOM Explicit VR Big Endian	1.2.840.10008.1.2.2		
VL Endoscopic Image Storage	1.2.840.10008.5.1.4.1.1.77.1.1	DICOM Implicit VR Little Endian	1.2.840.10008.1.2	SCU	None
		DICOM Explicit VR Little Endian	1.2.840.10008.1.2.1		
		DICOM Explicit VR Big Endian	1.2.840.10008.1.2.2		
VL Microscopic Image Storage	1.2.840.10008.5.1.4.1.1.77.1.2	DICOM Implicit VR Little Endian	1.2.840.10008.1.2	SCU	None
		DICOM Explicit VR Little Endian	1.2.840.10008.1.2.1		
		DICOM Explicit VR Big Endian	1.2.840.10008.1.2.2		
VL Slide Coordinates Microscopic Image Storage	1.2.840.10008.5.1.4.1.1.77.1.3	DICOM Implicit VR Little Endian	1.2.840.10008.1.2	SCU	None
		DICOM Explicit VR Little Endian	1.2.840.10008.1.2.1		
		DICOM Explicit VR Big Endian	1.2.840.10008.1.2.2		
VL Photographic Image Storage	1.2.840.10008.5.1.4.1.1.77.1.4	DICOM Implicit VR Little Endian	1.2.840.10008.1.2	SCP	None
		DICOM Explicit VR Little Endian	1.2.840.10008.1.2.1		
		DICOM Explicit VR Big Endian	1.2.840.10008.1.2.2		

Table 2: Proposed Presentation Contexts for the DICOM Server (continued)

Abstract Syntax		Transfer Syntax		Role	Ext. Neg.
Name	UID	Name	UID		
Storage Commitment Push Model SOP Class	1.2.840.10008.1.20.1	DICOM Implicit VR Little Endian	1.2.840.10008.1.2	SCU	None
		DICOM Explicit VR Little Endian	1.2.840.10008.1.2.1		
		DICOM Explicit VR Big Endian	1.2.840.10008.1.2.2		
Modality Performed Procedure Step SOP Class	1.2.840.10008.3.1.2.3.3	DICOM Implicit VR Little Endian	1.2.840.10008.1.2	SCU	None
		DICOM Explicit VR Little Endian	1.2.840.10008.1.2.1		
		DICOM Explicit VR Big Endian	1.2.840.10008.1.2.2		
Key Object Selection Document	1.2.840.10008.5.1.4.1.1.88.59	DICOM Implicit VR Little Endian	1.2.840.10008.1.2	SCU	None
		DICOM Explicit VR Little Endian	1.2.840.10008.1.2.1		
		DICOM Explicit VR Big Endian	1.2.840.10008.1.2.2		
RT Dose Storage	1.2.840.10008.5.1.4.1.1.481.2	DICOM Implicit VR Little Endian	1.2.840.10008.1.2	SCU	None
		DICOM Explicit VR Little Endian	1.2.840.10008.1.2.1		
		DICOM Explicit VR Big Endian	1.2.840.10008.1.2.2		
RT Structure Set Storage	1.2.840.10008.5.1.4.1.1.481.3	DICOM Implicit VR Little Endian	1.2.840.10008.1.2	SCU	None
		DICOM Explicit VR Little Endian	1.2.840.10008.1.2.1		
		DICOM Explicit VR Big Endian	1.2.840.10008.1.2.2		
RT Beams Treatment Record Storage	1.2.840.10008.5.1.4.1.1.481.4	DICOM Implicit VR Little Endian	1.2.840.10008.1.2	SCU	None
		DICOM Explicit VR Little Endian	1.2.840.10008.1.2.1		
		DICOM Explicit VR Big Endian	1.2.840.10008.1.2.2		
RT Plan Storage	1.2.840.10008.5.1.4.1.1.481.5	DICOM Implicit VR Little Endian	1.2.840.10008.1.2	SCU	None
		DICOM Explicit VR Little Endian	1.2.840.10008.1.2.1		
		DICOM Explicit VR Big Endian	1.2.840.10008.1.2.2		

Table 2: Proposed Presentation Contexts for the DICOM Server (continued)

Abstract Syntax		Transfer Syntax		Role	Ext. Neg.
Name	UID	Name	UID		
RT Brachy Treatment Record Storage	1.2.840.10008.5.1.4.1.1.481.6	DICOM Implicit VR Little Endian	1.2.840.10008.1.2	SCU	None
		DICOM Explicit VR Little Endian	1.2.840.10008.1.2.1		
		DICOM Explicit VR Big Endian	1.2.840.10008.1.2.2		
RT Treatment Summary Record Storage	1.2.840.10008.5.1.4.1.1.481.7	DICOM Implicit VR Little Endian	1.2.840.10008.1.2	SCU	None
		DICOM Explicit VR Little Endian	1.2.840.10008.1.2.1		
		DICOM Explicit VR Big Endian	1.2.840.10008.1.2.2		
Hardcopy Grayscale Image Storage	1.2.840.10008.5.1.1.29	DICOM Implicit VR Little Endian	1.2.840.10008.1.2	SCU	None
		DICOM Explicit VR Little Endian	1.2.840.10008.1.2.1		
		DICOM Explicit VR Big Endian	1.2.840.10008.1.2.2		
Hardcopy Color Image Storage	1.2.840.10008.5.1.1.30	DICOM Implicit VR Little Endian	1.2.840.10008.1.2	SCU	None
		DICOM Explicit VR Little Endian	1.2.840.10008.1.2.1		
		DICOM Explicit VR Big Endian	1.2.840.10008.1.2.2		
Multi-Frame Grayscale Byte Secondary Capture Image Storage	1.2.840.10008.5.1.4.1.1.7.2	DICOM Implicit VR Little Endian	1.2.840.10008.1.2	SCU	None
		DICOM Explicit VR Little Endian	1.2.840.10008.1.2.1		
		DICOM Explicit VR Big Endian	1.2.840.10008.1.2.2		
Multi-Frame Grayscale Word Secondary Capture Image Storage	1.2.840.10008.5.1.4.1.1.7.3	DICOM Implicit VR Little Endian	1.2.840.10008.1.2	SCU	None
		DICOM Explicit VR Little Endian	1.2.840.10008.1.2.1		
		DICOM Explicit VR Big Endian	1.2.840.10008.1.2.2		
Visible Light Image Storage (Retired)	1.2.840.10008.5.1.4.1.1.77.1	DICOM Implicit VR Little Endian	1.2.840.10008.1.2	SCU	None
		DICOM Explicit VR Little Endian	1.2.840.10008.1.2.1		
		DICOM Explicit VR Big Endian	1.2.840.10008.1.2.2		

Table 2: Proposed Presentation Contexts for the DICOM Server (continued)

Abstract Syntax		Transfer Syntax		Role	Ext. Neg.
Name	UID	Name	UID		
Visible Light Multi-Frame Image Storage (Retired)	1.2.840.10008.5.1.4.1.1.77.2	DICOM Implicit VR Little Endian	1.2.840.10008.1.2	SCU	None
		DICOM Explicit VR Little Endian	1.2.840.10008.1.2.1		
		DICOM Explicit VR Big Endian	1.2.840.10008.1.2.2		
Nuclear Medicine Image Storage (Retired)	1.2.840.10008.5.1.4.1.1.5	DICOM Implicit VR Little Endian	1.2.840.10008.1.2	SCU	None
		DICOM Explicit VR Little Endian	1.2.840.10008.1.2.1		
		DICOM Explicit VR Big Endian	1.2.840.10008.1.2.2		
Basic Text SR Storage	1.2.840.10008.5.1.4.1.1.88.11	DICOM Implicit VR Little Endian	1.2.840.10008.1.2	SCU	None
		DICOM Explicit VR Little Endian	1.2.840.10008.1.2.1		
		DICOM Explicit VR Big Endian	1.2.840.10008.1.2.2		
Enhanced SR Storage	1.2.840.10008.5.1.4.1.1.88.22	DICOM Implicit VR Little Endian	1.2.840.10008.1.2	SCU	None
		DICOM Explicit VR Little Endian	1.2.840.10008.1.2.1		
		DICOM Explicit VR Big Endian	1.2.840.10008.1.2.2		
Comprehensive SR Storage	1.2.840.10008.5.1.4.1.1.88.33	DICOM Implicit VR Little Endian	1.2.840.10008.1.2	SCU	None
		DICOM Explicit VR Little Endian	1.2.840.10008.1.2.1		
		DICOM Explicit VR Big Endian	1.2.840.10008.1.2.2		
Stand-alone Overlay Storage	1.2.840.10008.5.1.4.1.1.8	DICOM Implicit VR Little Endian	1.2.840.10008.1.2	SCU	None
		DICOM Explicit VR Little Endian	1.2.840.10008.1.2.1		
		DICOM Explicit VR Big Endian	1.2.840.10008.1.2.2		
Stand-alone Curve Storage	1.2.840.10008.5.1.4.1.1.9	DICOM Implicit VR Little Endian	1.2.840.10008.1.2	SCU	None
		DICOM Explicit VR Little Endian	1.2.840.10008.1.2.1		
		DICOM Explicit VR Big Endian	1.2.840.10008.1.2.2		

Table 2: Proposed Presentation Contexts for the DICOM Server (continued)

Abstract Syntax		Transfer Syntax		Role	Ext. Neg.
Name	UID	Name	UID		
Stand-alone Modality LUT Storage	1.2.840.10008.5.1.4.1.1.10	DICOM Implicit VR Little Endian	1.2.840.10008.1.2	SCU	None
		DICOM Explicit VR Little Endian	1.2.840.10008.1.2.1		
		DICOM Explicit VR Big Endian	1.2.840.10008.1.2.2		
Stand-alone VOI LUT Storage	1.2.840.10008.5.1.4.1.1.11	DICOM Implicit VR Little Endian	1.2.840.10008.1.2	SCU	None
		DICOM Explicit VR Little Endian	1.2.840.10008.1.2.1		
		DICOM Explicit VR Big Endian	1.2.840.10008.1.2.2		
12-lead ECG Waveform Storage	1.2.840.10008.5.4.1.1.9.1.1	DICOM Implicit VR Little Endian	1.2.840.10008.1.2	SCU	None
		DICOM Explicit VR Little Endian	1.2.840.10008.1.2.1		
		DICOM Explicit VR Big Endian	1.2.840.10008.1.2.2		
General ECG Waveform Storage	1.2.840.10008.5.4.1.1.9.1.2	DICOM Implicit VR Little Endian	1.2.840.10008.1.2	SCU	None
		DICOM Explicit VR Little Endian	1.2.840.10008.1.2.1		
		DICOM Explicit VR Big Endian	1.2.840.10008.1.2.2		
Ambulatory ECG Waveform Storage	1.2.840.10008.5.4.1.1.9.1.3	DICOM Implicit VR Little Endian	1.2.840.10008.1.2	SCU	None
		DICOM Explicit VR Little Endian	1.2.840.10008.1.2.1		
		DICOM Explicit VR Big Endian	1.2.840.10008.1.2.2		
Hemodynamic Waveform Storage	1.2.840.10008.5.4.1.1.9.2.1	DICOM Implicit VR Little Endian	1.2.840.10008.1.2	SCU	None
		DICOM Explicit VR Little Endian	1.2.840.10008.1.2.1		
		DICOM Explicit VR Big Endian	1.2.840.10008.1.2.2		
Cardiac Electrophysiology Waveform Storage	1.2.840.10008.5.4.1.1.9.3.1	DICOM Implicit VR Little Endian	1.2.840.10008.1.2	SCU	None
		DICOM Explicit VR Little Endian	1.2.840.10008.1.2.1		
		DICOM Explicit VR Big Endian	1.2.840.10008.1.2.2		

Table 2: Proposed Presentation Contexts for the DICOM Server (continued)

Abstract Syntax		Transfer Syntax		Role	Ext. Neg.
Name	UID	Name	UID		
Basic Voice Audio Waveform Storage	1.2.840.10008.5.4.1.1.9.1.1	DICOM Implicit VR Little Endian	1.2.840.10008.1.2	SCU	None
		DICOM Explicit VR Little Endian	1.2.840.10008.1.2.1		
		DICOM Explicit VR Big Endian	1.2.840.10008.1.2.2		
Multi-frame Single Bit Secondary Capture Image Storage	1.2.840.10008.5.4.1.1.7.1	DICOM Implicit VR Little Endian	1.2.840.10008.1.2	SCU	None
		DICOM Explicit VR Little Endian	1.2.840.10008.1.2.1		
		DICOM Explicit VR Big Endian	1.2.840.10008.1.2.2		
Multi-frame True Color Secondary Capture Image Storage	1.2.840.10008.5.4.1.1.7.4	DICOM Implicit VR Little Endian	1.2.840.10008.1.2	SCU	None
		DICOM Explicit VR Little Endian	1.2.840.10008.1.2.1		
		DICOM Explicit VR Big Endian	1.2.840.10008.1.2.2		
MR Spectroscopy Storage	1.2.840.10008.5.4.1.1.9.4.2	DICOM Implicit VR Little Endian	1.2.840.10008.1.2	SCU	None
		DICOM Explicit VR Little Endian	1.2.840.10008.1.2.1		
		DICOM Explicit VR Big Endian	1.2.840.10008.1.2.2		
Enhanced MR Image Storage	1.2.840.10008.5.4.1.1.9.4.1	DICOM Implicit VR Little Endian	1.2.840.10008.1.2	SCU	None
		DICOM Explicit VR Little Endian	1.2.840.10008.1.2.1		
		DICOM Explicit VR Big Endian	1.2.840.10008.1.2.2		
Raw Data Storage	1.2.840.10008.5.4.1.1.66	DICOM Implicit VR Little Endian	1.2.840.10008.1.2	SCU	None
		DICOM Explicit VR Little Endian	1.2.840.10008.1.2.1		
		DICOM Explicit VR Big Endian	1.2.840.10008.1.2.2		
Presentation LUT	1.2.840.10008.5.1.1.23	DICOM Implicit VR Little Endian	1.2.840.10008.1.2	SCU	None
		DICOM Explicit VR Little Endian	1.2.840.10008.1.2.1		
		DICOM Explicit VR Big Endian	1.2.840.10008.1.2.2		

Table 2: Proposed Presentation Contexts for the DICOM Server (continued)

Abstract Syntax		Transfer Syntax		Role	Ext. Neg.
Name	UID	Name	UID		
Mammography CAD SR	1.2.840.10008.5.4.1.1.88.50	DICOM Implicit VR Little Endian	1.2.840.10008.1.2	SCU	None
		DICOM Explicit VR Little Endian	1.2.840.10008.1.2.1		
		DICOM Explicit VR Big Endian	1.2.840.10008.1.2.2		
Chest CAD SR	1.2.840.10008.5.4.1.1.88.65	DICOM Implicit VR Little Endian	1.2.840.10008.1.2	SCU	None
		DICOM Explicit VR Little Endian	1.2.840.10008.1.2.1		
		DICOM Explicit VR Big Endian	1.2.840.10008.1.2.2		
Grayscale Softcopy Presentation State	1.2.840.10008.5.1.4.1.1.11.1	DICOM Implicit VR Little Endian	1.2.840.10008.1.2	SCU	None
		DICOM Explicit VR Little Endian	1.2.840.10008.1.2.1		
		DICOM Explicit VR Big Endian	1.2.840.10008.1.2.2		
Study Content Notification	1.2.840.10008.1.9	DICOM Implicit VR Little Endian	1.2.840.10008.1.2	SCU	None
		DICOM Explicit VR Little Endian	1.2.840.10008.1.2.1		
		DICOM Explicit VR Big Endian	1.2.840.10008.1.2.2		

3.1.2.1.2.1 SOP Specific Conformance Statement for Storage SOP Class

The DICOM Server provides standard conformance to the DICOM V3.0 Storage Service Class as an SCU for the following SOP Classes:

Table 3: DICOM V3.0 Storage Service Class as an SCU

SOP Class Name	SOP Class UID
CT Image Storage	1.2.840.10008.5.1.4.1.1.2
MR Image Storage	1.2.840.10008.5.1.4.1.1.4
Nuclear Medicine Image Storage	1.2.840.10008.5.1.4.1.1.20
Computed Radiography Image Storage	1.2.840.10008.5.1.4.1.1.1
Secondary Capture Image Storage	1.2.840.10008.5.1.4.1.1.7
X-Ray Angiographic Image Storage	1.2.840.10008.5.1.4.1.1.7.12.1
X-Ray Radiofluoroscopy Image Storage	1.2.840.10008.5.1.4.1.1.7.12.2
Ultra Sound Image Storage	1.2.840.10008.5.1.4.1.1.7.6.1
Ultra Sound Image Storage (retired)	1.2.840.10008.5.1.4.1.1.7.6
Ultra Sound Multi Frame Image Storage	1.2.840.10008.5.1.4.1.1.3.1
Ultra Sound Multi Frame Image Storage (retired)	1.2.840.10008.5.1.4.1.1.3
Digital X-Ray Image Storage For Presentation	1.2.840.10008.5.1.4.1.1.1.1
Digital X-Ray Image Storage For Processing	1.2.840.10008.5.1.4.1.1.1.1.1
Digital Mammography X-Ray Image Storage For Presentation	1.2.840.10008.5.1.4.1.1.1.2
Digital Mammography X-Ray Image Storage For Processing	1.2.840.10008.5.1.4.1.1.1.2.1
Digital Intra Oral X-Ray Image Storage For Presentation	1.2.840.10008.5.1.4.1.1.1.3
Digital Intra Oral X-Ray Image Storage For Processing	1.2.840.10008.5.1.4.1.1.1.3.1
RT Image Storage	1.2.840.10008.5.1.4.1.1.481.1
VL Endoscopic Image Storage	1.2.840.10008.5.1.4.1.1.77.1.1
VL Microscopic Image Storage	1.2.840.10008.5.1.4.1.1.77.1.2
VL Slide Coordinates Microscopic Image Storage	1.2.840.10008.5.1.4.1.1.77.1.3
VL Photographic Image Storage	1.2.840.10008.5.1.4.1.1.77.1.4
X-Ray Angiographic Bi-Plane Image Storage	1.2.840.10008.5.1.4.1.1.12.3
Positron Emission Tomography	1.2.840.10008.5.1.4.1.1.128
Key Object Selection Document	1.2.840.10008.5.1.4.1.1.88.59
RT Dose Storage	1.2.840.10008.5.1.4.1.1.481.2
RT Structure Set Storage	1.2.840.10008.5.1.4.1.1.481.3
RT Beams Treatment Record Storage	1.2.840.10008.5.1.4.1.1.481.4
RT Plan Storage	1.2.840.10008.5.1.4.1.1.481.5
RT Brachy Treatment Record Storage	1.2.840.10008.5.1.4.1.1.481.6
RT Treatment Summary Record Storage	1.2.840.10008.5.1.4.1.1.481.7
Hardcopy Grayscale Image Storage	1.2.840.10008.5.1.1.29
Hardcopy Color Image Storage	1.2.840.10008.5.1.1.30

Table 3: DICOM V3.0 Storage Service Class as an SCU (continued)

SOP Class Name	SOP Class UID
Multi-Frame Grayscale Byte Secondary Capture Image Storage	1.2.840.10008.5.1.4.1.1.7.2
Multi-Frame Grayscale Word Secondary Capture Image Storage	1.2.840.10008.5.1.4.1.1.7.3
Visible Light Image Storage (Retired)	1.2.840.10008.5.1.4.1.1.77.1
Visible Light Multi-Frame Image Storage (Retired)	1.2.840.10008.5.1.4.1.1.77.2
Nuclear Medicine Image Storage (Retired)	1.2.840.10008.5.1.4.1.1.5
Basic Text SR Storage	1.2.840.10008.5.1.4.1.1.88.11
Enhanced SR Storage	1.2.840.10008.5.1.4.1.1.88.22
Ultra Sound Multi Frame Image Storage (retired)	1.2.840.10008.5.1.4.1.1.3
Digital X-Ray Image Storage For Presentation	1.2.840.10008.5.1.4.1.1.1.1
Digital X-Ray Image Storage For Processing	1.2.840.10008.5.1.4.1.1.1.1.1
Comprehensive SR Storage	1.2.840.10008.5.1.4.1.1.88.33
Stand-alone Overlay Storage	1.2.840.10008.5.1.4.1.1.8
Stand-alone Curve Storage	1.2.840.10008.5.1.4.1.1.9
Stand-alone Modality LUT Storage	1.2.840.10008.5.1.4.1.1.10
Stand-alone VOI LUT Storage	1.2.840.10008.5.1.4.1.1.11
12-lead ECG Waveform Storage	1.2.840.10008.5.1.4.1.1.9.1.1
General ECG Waveform Storage	1.2.840.10008.5.1.4.1.1.9.1.2
Ambulatory ECG Waveform Storage	1.2.840.10008.5.1.4.1.1.9.1.3
Hemodynamic Waveform Storage	1.2.840.10008.5.1.4.1.1.9.2.1
Cardiac Electrophysiology Waveform Storage	1.2.840.10008.5.1.4.1.1.9.3.1
Basic Voice Audio Waveform Storage	1.2.840.10008.5.1.4.1.1.9.4.1
Multi-frame Single Bit Secondary Capture Image Storage	1.2.840.10008.5.1.4.1.1.7.1
Multi-frame True Color Secondary Capture Image Storage	1.2.840.10008.5.1.4.1.1.7.4
MR Spectroscopy Storage	1.2.840.10008.5.1.4.1.1.4.2
Enhanced MR Image Storage	1.2.840.10008.5.1.4.1.1.4.1
Raw Data Storage	1.2.840.10008.5.1.4.1.1.66
Presentation LUT	1.2.840.10008.5.1.4.1.1.23
Mammography CAD SR	1.2.840.10008.5.1.4.1.1.88.50
Chest CAD SR	1.2.840.10008.5.1.4.1.1.88.65
Grayscale Softcopy Presentation State	1.2.840.10008.5.1.4.1.1.11.1

Multiple C-STORE operations can be performed over a single association.

Upon receiving a C-STORE confirmation containing a successful status, this implementation will perform the next C-STORE operation. The association will be maintained if possible.

Any premature termination of the C-STORE association will result the ending of the C-MOVE operation.

There are no time-outs implemented in this process.

3.1.2.1.2.2 SOP Specific Conformance for Grayscale Presentation State Storage as SCU

The DICOM Server provides standard conformance to the DICOM V3.0 Grayscale Presentation State as an SCU. The monochrome Image Storage SOP classes in [Table 4](#) may be referenced by instances of Grayscale Softcopy Presentation State.

Table 4: Monochrome Image Storage SOP Classes

SOP Class Name	SOP Class UID
CT Image Storage	1.2.840.10008.5.1.4.1.1.2
MR Image Storage	1.2.840.10008.5.1.4.1.1.4
Nuclear Medicine Image Storage	1.2.840.10008.5.1.4.1.1.20
Computed Radiography Image Storage	1.2.840.10008.5.1.4.1.1.1
Secondary Capture Image Storage	1.2.840.10008.5.1.4.1.1.7
Ultrasound Multi-Frame Image Storage (Retired)	1.2.840.10008.5.1.4.1.1.3
Ultrasound Multi-Frame Image Storage (Retired)	1.2.840.10008.5.1.4.1.1.3.1
Ultrasound Image Storage (Retired)	1.2.840.10008.5.1.4.1.1.6
Ultrasound Image Storage	1.2.840.10008.5.1.4.1.1.6.1
X-Ray Angiographic Image Storage	1.2.840.10008.5.1.4.1.1.12.1
X-Ray Radiofluoroscopic Image Storage	1.2.840.10008.5.1.4.1.1.12.2
Digital X-Ray Image Storage For Presentation	1.2.840.10008.5.1.4.1.1.1.1
Digital X-Ray image Storage For Processing	1.2.840.10008.5.1.4.1.1.1.1.1
Digital Mammography X-Ray Image Storage For Presentation	1.2.840.10008.5.1.4.1.1.1.2
Digital Mammography X-Ray Image Storage for Processing	1.2.840.10008.5.1.4.1.1.1.2.1
Digital Intra Oral X-Ray Image Storage for Presentation	1.2.840.10008.5.1.4.1.1.1.3
Digital Intra Oral X-Ray Image Storage for Processing	1.2.840.10008.5.1.4.1.1.1.3.1
RT Image Storage	1.2.840.10008.5.1.4.1.1.481.1
VL Endoscopic Image Storage	1.2.840.10008.5.1.4.1.1.77.1.1
VL Microscopic Image Storage	1.2.840.10008.5.1.4.1.1.77.1.2
VL Slide Coordinates Microscopic Image Storage	1.2.840.10008.5.1.4.1.1.77.1.3
VL Photographic Image Storage	1.2.840.10008.5.1.4.1.1.77.1.4
X-Ray Angiographic Bi-Plane Image Storage	1.2.840.10008.5.1.4.1.1.12.3
Positron Emission Tomography	1.2.840.10008.5.1.4.1.1.128

3.1.2.1.2.3 SOP Specific Conformance for Grayscale Presentation State Storage as SCP

The DICOM Server provides standard conformance to the DICOM V3.0 Grayscale Presentation State as an SCP. The monochrome Image Storage SOP classes in [Table 4](#) may be referenced by instances of Grayscale Softcopy Presentation State.

3.1.3 Association Acceptance Policy

The DICOM Server places no limitations on the number of simultaneous connections it will support. However, it is possible to control who may connect to the DICOM Server during the system configuration process.

3.1.3.1 Remote System Requests Verification

A Remote System requests verification from the DICOM Server using the C-ECHO command.

3.1.3.1.1 Associated Real World Activity

The DICOM Server performs the Verification Service Class by responding with C-ECHO-RSP.

3.1.3.1.2 Presentation Context Table

Any of the Presentation Contexts shown in [Table 5](#) is acceptable to the DICOM Server.

Table 5: Proposed Presentation Contexts for the DICOM Server

Abstract Syntax		Transfer Syntax		Role	Ext. Neg.
Name	UID	Name	UID		
Verification	1.2.840.10008.1.1	DICOM Implicit VR Little Endian	1.2.840.10008.1.2	SCP	None
		DICOM Explicit VR Little Endian	1.2.840.10008.1.2.1		
		DICOM Explicit VR Big Endian	1.2.840.10008.1.2.2		

3.1.3.1.2.1 SOP Specific Conformance to Verification SOP Class

The DICOM Server provides standard conformance to the DICOM V3.0 Verification Service Class as an SCP for the Verification SOP Class, UID=1.2.840.10008.1.1.

3.1.3.1.3 Transfer Syntax Selection Policies

The DICOM Server prefers an explicit Transfer Syntax encoding. If offered a choice of Transfer Syntax in a Presentation Context, it will apply the following priorities to the choice of Transfer Syntax:

- DICOM Explicit VR Big Endian
- DICOM Explicit VR Little Endian
- DICOM Implicit VR Little Endian (Default)

3.1.3.2 Remote System Requests Object Storage

A Remote System requests objects (Images, KIN) storage from the DICOM Server using the C-STORE command.

3.1.3.2.1 Associated Real World Activity

The Real World activity associated with the C-STORE operation is the storage of the object in the archive. The DICOM Server will issue a failure status if it is unable to store the object in the archive.

3.1.3.2.2 Presentation Context Table

Any of the Presentation Contexts shown in [Table 6](#) is acceptable to the DICOM Server:

3.1.3.2.2.1 SOP Specific Conformance to Storage SOP Class

The DICOM Server provides standard conformance to the DICOM V3.0 Storage Service Class as an SCP for the following SOP Classes:

Table 6: DICOM V3.0 Storage Service Class as an SCP

SOP Class Name	SOP Class UID
CT Image Storage	1.2.840.10008.5.1.4.1.1.2
MR Image Storage	1.2.840.10008.5.1.4.1.1.4
Nuclear Medicine Image Storage	1.2.840.10008.5.1.4.1.1.20
Computed Radiography Image Storage	1.2.840.10008.5.1.4.1.1.1
Secondary Capture Image Storage	1.2.840.10008.5.1.4.1.1.7
X-Ray Angiographic Image Storage	1.2.840.10008.5.1.4.1.1.7.12.1
X-Ray Radiofluoroscopy Image Storage	1.2.840.10008.5.1.4.1.1.7.12.2
Ultra Sound Image Storage	1.2.840.10008.5.1.4.1.1.7.6.1
Ultra Sound Image Storage (retired)	1.2.840.10008.5.1.4.1.1.7.6
Ultra Sound Multi Frame Image Storage	1.2.840.10008.5.1.4.1.1.3.1
Ultra Sound Multi Frame Image Storage (retired)	1.2.840.10008.5.1.4.1.1.3
Digital X-Ray Image Storage For Presentation	1.2.840.10008.5.1.4.1.1.1.1
Digital X-Ray Image Storage For Processing	1.2.840.10008.5.1.4.1.1.1.1.1
Digital Mammography X-Ray Image Storage For Presentation	1.2.840.10008.5.1.4.1.1.1.2
Digital Mammography X-Ray Image Storage For Processing	1.2.840.10008.5.1.4.1.1.1.2.1
Digital Intra Oral X-Ray Image Storage For Presentation	1.2.840.10008.5.1.4.1.1.1.3
Digital Intra Oral X-Ray Image Storage For Processing	1.2.840.10008.5.1.4.1.1.1.3.1
RT Image Storage	1.2.840.10008.5.1.4.1.1.481.1
VL Endoscopic Image Storage	1.2.840.10008.5.1.4.1.1.77.1.1
VL Microscopic Image Storage	1.2.840.10008.5.1.4.1.1.77.1.2
VL Slide Coordinates Microscopic Image Storage	1.2.840.10008.5.1.4.1.1.77.1.3
VL Photographic Image Storage	1.2.840.10008.5.1.4.1.1.77.1.4
X-Ray Angiographic Bi-Plane Image Storage	1.2.840.10008.5.1.4.1.1.12.3
Positron Emission Tomography	1.2.840.10008.5.1.4.1.1.128
Key Object Selection Document	1.2.840.10008.5.1.4.1.1.88.59
RT Dose Storage	1.2.840.10008.5.1.4.1.1.481.2
RT Structure Set Storage	1.2.840.10008.5.1.4.1.1.481.3
RT Beams Treatment Record Storage	1.2.840.10008.5.1.4.1.1.481.4
RT Plan Storage	1.2.840.10008.5.1.4.1.1.481.5
RT Brachy Treatment Record Storage	1.2.840.10008.5.1.4.1.1.481.6
RT Treatment Summary Record Storage	1.2.840.10008.5.1.4.1.1.481.7
Hardcopy Grayscale Image Storage	1.2.840.10008.5.1.1.29
Hardcopy Color Image Storage	1.2.840.10008.5.1.1.30
Multi-Frame Grayscale Byte Secondary Capture Image Storage	1.2.840.10008.5.1.4.1.1.7.2

Table 6: DICOM V3.0 Storage Service Class as an SCP (continued)

SOP Class Name	SOP Class UID
Multi-Frame Grayscale Word Secondary Capture Image Storage	1.2.840.10008.5.1.4.1.1.7.3
Visible Light Image Storage (Retired)	1.2.840.10008.5.1.4.1.1.77.1
Visible Light Multi-Frame Image Storage (Retired)	1.2.840.10008.5.1.4.1.1.77.2
Nuclear Medicine Image Storage (Retired)	1.2.840.10008.5.1.4.1.1.5
Basic Text SR Storage	1.2.840.10008.5.1.4.1.1.88.11
Enhanced SR Storage	1.2.840.10008.5.1.4.1.1.88.22
Comprehensive SR Storage	1.2.840.10008.5.1.4.1.1.88.33
Stand-alone Overlay Storage	1.2.840.10008.5.1.4.1.1.8
Stand-alone Curve Storage	1.2.840.10008.5.1.4.1.1.9
Stand-alone Modality LUT Storage	1.2.840.10008.5.1.4.1.1.10
Stand-alone VOI LUT Storage	1.2.840.10008.5.1.4.1.1.11
12-lead ECG Waveform Storage	1.2.840.10008.5.1.4.1.1.9.1.1
General ECG Waveform Storage	1.2.840.10008.5.1.4.1.1.9.1.2
Ambulatory ECG Waveform Storage	1.2.840.10008.5.1.4.1.1.9.1.3
Hemodynamic Waveform Storage	1.2.840.10008.5.1.4.1.1.9.2.1
Cardiac Electrophysiology Waveform Storage	1.2.840.10008.5.1.4.1.1.9.3.1
Basic Voice Audio Waveform Storage	1.2.840.10008.5.1.4.1.1.9.4.1
Multi-frame Single Bit Secondary Capture Image Storage	1.2.840.10008.5.1.4.1.1.7.1
Multi-frame True Color Secondary Capture Image Storage	1.2.840.10008.5.1.4.1.1.7.4
MR Spectroscopy Storage	1.2.840.10008.5.1.4.1.1.4.2
Enhanced MR Image Storage	1.2.840.10008.5.1.4.1.1.4.1
Raw Data Storage	1.2.840.10008.5.1.4.1.1.66
Presentation LUT	1.2.840.10008.5.1.4.1.1.23
Mammography CAD SR	1.2.840.10008.5.1.4.1.1.88.50
Chest CAD SR	1.2.840.10008.5.1.4.1.1.88.65
Grayscale Softcopy Presentation State	1.2.840.10008.5.1.4.1.1.11.1
Stand-alone PET Curve Storage	1.2.840.10008.5.1.4.1.1.129

The DICOM Server conforms to the SOPs of the Storage Service Class at Level 2 (Full).

In case of a successful C-STORE, the stored image may be accessed by the DICOM Server.

The duration of the storage is dependent on user-configuration of the Auto Delete mechanism, which can optionally be invoked. The Auto Delete component periodically cleans the online storage layer. Implicitly, it removes from the online storage those studies which are least likely to be needed. To achieve this goal, it is governed by a configurable set of rules. The Auto Delete process is triggered by pre-scheduled configurable timing, on condition that the available free online space has reached a (user defined) red zone threshold. It will clean up the online storage until the free space on it reaches another (user defined) green zone threshold. This mechanism is optional and is controlled by user configurable parameters.

The DICOM Server will not coerce any attribute except for the following: pixel data (0x7FE0, 0x0010) of type OW is converted to OB when bits allocated (0x0028, 0x0100).

If the DICOM Server returns one of the following status codes, it means that the C-STORE has been unsuccessful.

Service Status	Further Meaning	Status Codes	Reason
Refused	General refusal status	A700	
Failure	General failure status	C000	

3.1.3.2.2.2 Image Compression

The DICOM Server will compress an image if the DICOM Association parameters and/or image attributes satisfy at least one of the following conditions (by default, lossless compression is applied).

- Called AE Title matches a configured value
- Calling AE Title matches a configured value
- The Modality tag (0008, 0060) of the image equals a configured value, does not equal a configured value, or the value is missing.
- The Body Part tag (0018, 0015) of the image equals a configured value, does not equal a configured value, or the value is missing.

The Photometric Interpretation attribute (0028, 0004) has one of the following values (not configurable):

- MONOCHROME1
- MONOCHROME2
- PALETTE COLOR
- RGB
- YBR_FULL
- YBR_FULL_422
- YBR_PARTIAL_422

Exceptions:

- If compression is not configured for an image, but the image arrives in lossless compressed form, the image will be decompressed. Images compressed using a lossy transfer syntax will be stored as such, independent of any compression settings on the DICOM server.
- If the image arrives in a lossless compressed form and the DICOM server is configured to apply lossy compression, the image will be re-compressed according to the lossy JPEG Compression Transfer Syntax.
- If the Transfer Syntax the image arrives in is not lossy, but the image was previously lossy compressed, as indicated by the Lossy Image Compression (0028, 2110) tag, and the rules indicate lossy compression, lossless compression will be applied instead to avoid double lossy compression.

The JPEG compression process (and Transfer Syntax) that is applied to the image is selected as follows:

- Lossless JPEG Non-Hierarchical, Process 14 (1.2.840.10008.1.2.4.57)
- Lossy JPEG and Bits allocated (0028,0101) ≤ 8 :
JPEG Baseline, Process 1 (1.2.840.10008.1.2.4.50)
- Lossy JPEG and Bits allocated (0028,0101) > 8 :
JPEG Extended, Process 4 (1.2.840.10008.1.2.4.51)

If lossy Image Compression is applied to the image (i.e., the (7FE0, 0010) Pixel Data attribute is modified), then the following additional attributes are also modified:

- (0008, 0008) Image Type - the first value is set to "DERIVED". The second value is set to "SECONDARY".
- (0008, 0018) SOP Instance UID - a new SOP Instance UID is created.
- (0008, 2112) Derivation Description
- (0008, 2112) Source Image Sequence - a new item is added to reflect the original SOP Instance UID.
- (0028, 2110) Lossy Image Compression - the value is set to "01".
- (0028, 2112) Lossy Image Compression Ratio - the resulting Image Compression Ratio is appended to this list of values.

3.1.3.2.3 Presentation Context Acceptance Criterion

The DICOM Server will accept any Presentation Context from [Table 7](#).

Table 7: Acceptable Presentation Contexts for DICOM Server

Abstract Syntax		Transfer Syntax		Role	Ext. Neg.
Name	UID	Name	UID		
CT Image	1.2.840.10008.5.1.4.1.1.2	DICOM Implicit VR Little Endian	1.2.840.10008.1.2	SCP	None
	1.2.840.10008.5.1.4.1.1.2	DICOM Explicit VR Little Endian	1.2.840.10008.1.2.1	SCP	None
	1.2.840.10008.5.1.4.1.1.2	DICOM Explicit VR Big Endian	1.2.840.10008.1.2.2	SCP	None
	1.2.840.10008.5.1.4.1.1.2	JPEG Baseline (Process 1)	1.2.840.10008.1.2.4.50	SCP	None
	1.2.840.10008.5.1.4.1.1.2	JPEG Extended (Process 2 & 4)	1.2.840.10008.1.2.4.51	SCP	None
	1.2.840.10008.5.1.4.1.1.2	JPEG Lossless, Non-Hierarchical (Process 14)	1.2.840.10008.1.2.4.57	SCP	None
	1.2.840.10008.5.1.4.1.1.2	JPEG Lossless, Non-Hierarchical, First-Order Prediction (Process 14 [Selection Value 1])	1.2.840.10008.1.2.4.70	SCP	None
	1.2.840.10008.5.1.4.1.1.2	JPEG 2000 Image Compression (Lossless Only)	1.2.840.10008.1.2.4.90	SCP	None
	1.2.840.10008.5.1.4.1.1.2	JPEG 2000 Image Compression	1.2.840.10008.1.2.4.991	SCP	None

Table 7: Acceptable Presentation Contexts for DICOM Server (continued)

Abstract Syntax		Transfer Syntax		Role	Ext. Neg.
Name	UID	Name	UID		
MR Image	1.2.840.10008.5.1.4.1.1.4	DICOM Implicit VR Little Endian	1.2.840.10008.1.2	SCP	None
	1.2.840.10008.5.1.4.1.1.4	DICOM Explicit VR Little Endian	1.2.840.10008.1.2.1	SCP	None
	1.2.840.10008.5.1.4.1.1.4	DICOM Explicit VR Big Endian	1.2.840.10008.1.2.2	SCP	None
	1.2.840.10008.5.1.4.1.1.4	JPEG Baseline (Process 1)	1.2.840.10008.1.2.4.50	SCP	None
	1.2.840.10008.5.1.4.1.1.4	JPEG Extended (Process 2 & 4)	1.2.840.10008.1.2.4.51	SCP	None
	1.2.840.10008.5.1.4.1.1.4	JPEG Lossless, Non-Hierarchical (Process 14)	1.2.840.10008.1.2.4.57	SCP	None
	1.2.840.10008.5.1.4.1.1.4	JPEG Lossless, Non-Hierarchical, First-Order Prediction (Process 14 [Selection Value 1])	1.2.840.10008.1.2.4.70	SCP	None
	1.2.840.10008.5.1.4.1.1.4	JPEG 2000 Image Compression (Lossless Only)	1.2.840.10008.1.2.4.90	SCP	None
	1.2.840.10008.5.1.4.1.1.4	JPEG 2000 Image Compression	1.2.840.10008.1.2.4.991	SCP	None

Table 7: Acceptable Presentation Contexts for DICOM Server (continued)

Abstract Syntax		Transfer Syntax		Role	Ext. Neg.
Name	UID	Name	UID		
NM Image	1.2.840.10008.5.1.4.1.1.20	DICOM Implicit VR Little Endian	1.2.840.10008.1.2	SCP	None
	1.2.840.10008.5.1.4.1.1.20	DICOM Explicit VR Little Endian	1.2.840.10008.1.2.1	SCP	None
	1.2.840.10008.5.1.4.1.1.20	DICOM Explicit VR Big Endian	1.2.840.10008.1.2.2	SCP	None
	1.2.840.10008.5.1.4.1.1.20	JPEG Baseline (Process 1)	1.2.840.10008.1.2.4.50	SCP	None
	1.2.840.10008.5.1.4.1.1.20	JPEG Extended (Process 2 & 4)	1.2.840.10008.1.2.4.51	SCP	None
	1.2.840.10008.5.1.4.1.1.20	JPEG Lossless, Non-Hierarchical (Process 14)	1.2.840.10008.1.2.4.57	SCP	None
	1.2.840.10008.5.1.4.1.1.20	JPEG Lossless, Non-Hierarchical, First-Order Prediction (Process 14 [Selection Value 1])	1.2.840.10008.1.2.4.70	SCP	None
	1.2.840.10008.5.1.4.1.1.20	JPEG 2000 Image Compression (Lossless Only)	1.2.840.10008.1.2.4.90	SCP	None
	1.2.840.10008.5.1.4.1.1.20	JPEG 2000 Image Compression	1.2.840.10008.1.2.4.991	SCP	None

Table 7: Acceptable Presentation Contexts for DICOM Server (continued)

Abstract Syntax		Transfer Syntax		Role	Ext. Neg.
Name	UID	Name	UID		
CR Image	1.2.840.10008.5.1.4.1.1.1	DICOM Implicit VR Little Endian	1.2.840.10008.1.2	SCP	None
	1.2.840.10008.5.1.4.1.1.1	DICOM Explicit VR Little Endian	1.2.840.10008.1.2.1	SCP	None
	1.2.840.10008.5.1.4.1.1.1	DICOM Explicit VR Big Endian	1.2.840.10008.1.2.2	SCP	None
	1.2.840.10008.5.1.4.1.1.1	JPEG Baseline (Process 1)	1.2.840.10008.1.2.4.50	SCP	None
	1.2.840.10008.5.1.4.1.1.1	JPEG Extended (Process 2 & 4)	1.2.840.10008.1.2.4.51	SCP	None
	1.2.840.10008.5.1.4.1.1.1	JPEG Lossless, Non-Hierarchical (Process 14)	1.2.840.10008.1.2.4.57	SCP	None
	1.2.840.10008.5.1.4.1.1.1	JPEG Lossless, Non-Hierarchical, First-Order Prediction (Process 14 [Selection Value 1])	1.2.840.10008.1.2.4.70	SCP	None
	1.2.840.10008.5.1.4.1.1.1	JPEG 2000 Image Compression (Lossless Only)	1.2.840.10008.1.2.4.90	SCP	None
	1.2.840.10008.5.1.4.1.1.1	JPEG 2000 Image Compression	1.2.840.10008.1.2.4.991	SCP	None

Table 7: Acceptable Presentation Contexts for DICOM Server (continued)

Abstract Syntax		Transfer Syntax		Role	Ext. Neg.
Name	UID	Name	UID		
SC Image	1.2.840.10008.5.1.4.1.1.7	DICOM Implicit VR Little Endian	1.2.840.10008.1.2	SCP	None
	1.2.840.10008.5.1.4.1.1.7	DICOM Explicit VR Little Endian	1.2.840.10008.1.2.1	SCP	None
	1.2.840.10008.5.1.4.1.1.7	DICOM Explicit VR Big Endian	1.2.840.10008.1.2.2	SCP	None
	1.2.840.10008.5.1.4.1.1.7	JPEG Baseline (Process 1)	1.2.840.10008.1.2.4.50	SCP	None
	1.2.840.10008.5.1.4.1.1.7	JPEG Extended (Process 2 & 4)	1.2.840.10008.1.2.4.51	SCP	None
	1.2.840.10008.5.1.4.1.1.7	JPEG Lossless, Non-Hierarchical (Process 14)	1.2.840.10008.1.2.4.57	SCP	None
	1.2.840.10008.5.1.4.1.1.7	JPEG Lossless, Non-Hierarchical, First-Order Prediction (Process 14 [Selection Value 1])	1.2.840.10008.1.2.4.70	SCP	None
	1.2.840.10008.5.1.4.1.1.7	JPEG 2000 Image Compression (Lossless Only)	1.2.840.10008.1.2.4.90	SCP	None
	1.2.840.10008.5.1.4.1.1.7	JPEG 2000 Image Compression	1.2.840.10008.1.2.4.991	SCP	None

Table 7: Acceptable Presentation Contexts for DICOM Server (continued)

Abstract Syntax		Transfer Syntax		Role	Ext. Neg.
Name	UID	Name	UID		
XA Image	1.2.840.10008.5.1.4.1.1.12.1	DICOM Implicit VR Little Endian	1.2.840.10008.1.2	SCP	None
	1.2.840.10008.5.1.4.1.1.12.1	DICOM Explicit VR Little Endian	1.2.840.10008.1.2.1	SCP	None
	1.2.840.10008.5.1.4.1.1.12.1	DICOM Explicit VR Big Endian	1.2.840.10008.1.2.2	SCP	None
	1.2.840.10008.5.1.4.1.1.12.1	JPEG Baseline (Process 1)	1.2.840.10008.1.2.4.50	SCP	None
	1.2.840.10008.5.1.4.1.1.12.1	JPEG Extended (Process 2 & 4)	1.2.840.10008.1.2.4.51	SCP	None
	1.2.840.10008.5.1.4.1.1.12.1	JPEG Lossless, Non-Hierarchical (Process 14)	1.2.840.10008.1.2.4.57	SCP	None
	1.2.840.10008.5.1.4.1.1.12.1	JPEG Lossless, Non-Hierarchical, First-Order Prediction (Process 14 [Selection Value 1])	1.2.840.10008.1.2.4.70	SCP	None
	1.2.840.10008.5.1.4.1.1.12.1	JPEG 2000 Image Compression (Lossless Only)	1.2.840.10008.1.2.4.90	SCP	None
	1.2.840.10008.5.1.4.1.1.12.1	JPEG 2000 Image Compression	1.2.840.10008.1.2.4.991	SCP	None

Table 7: Acceptable Presentation Contexts for DICOM Server (continued)

Abstract Syntax		Transfer Syntax		Role	Ext. Neg.
Name	UID	Name	UID		
RF Image	1.2.840.10008.5.1.4.1.1.12.2	DICOM Implicit VR Little Endian	1.2.840.10008.1.2	SCP	None
	1.2.840.10008.5.1.4.1.1.12.2	DICOM Explicit VR Little Endian	1.2.840.10008.1.2.1	SCP	None
	1.2.840.10008.5.1.4.1.1.12.2	DICOM Explicit VR Big Endian	1.2.840.10008.1.2.2	SCP	None
	1.2.840.10008.5.1.4.1.1.12.2	JPEG Baseline (Process 1)	1.2.840.10008.1.2.4.50	SCP	None
	1.2.840.10008.5.1.4.1.1.12.2	JPEG Extended (Process 2 & 4)	1.2.840.10008.1.2.4.51	SCP	None
	1.2.840.10008.5.1.4.1.1.12.2	JPEG Lossless, Non-Hierarchical (Process 14)	1.2.840.10008.1.2.4.57	SCP	None
	1.2.840.10008.5.1.4.1.1.12.2	JPEG Lossless, Non-Hierarchical, First-Order Prediction (Process 14 [Selection Value 1])	1.2.840.10008.1.2.4.70	SCP	None
	1.2.840.10008.5.1.4.1.1.12.2	JPEG 2000 Image Compression (Lossless Only)	1.2.840.10008.1.2.4.90	SCP	None
	1.2.840.10008.5.1.4.1.1.12.2	JPEG 2000 Image Compression	1.2.840.10008.1.2.4.991	SCP	None

Table 7: Acceptable Presentation Contexts for DICOM Server (continued)

Abstract Syntax		Transfer Syntax		Role	Ext. Neg.
Name	UID	Name	UID		
US Image	1.2.840.10008.5.1.4.1.1.6.1	DICOM Implicit VR Little Endian	1.2.840.10008.1.2	SCP	None
	1.2.840.10008.5.1.4.1.1.6.1	DICOM Explicit VR Little Endian	1.2.840.10008.1.2.1	SCP	None
	1.2.840.10008.5.1.4.1.1.6.1	DICOM Explicit VR Big Endian	1.2.840.10008.1.2.2	SCP	None
	1.2.840.10008.5.1.4.1.1.6.1	JPEG Baseline (Process 1)	1.2.840.10008.1.2.4.50	SCP	None
	1.2.840.10008.5.1.4.1.1.6.1	JPEG Extended (Process 2 & 4)	1.2.840.10008.1.2.4.51	SCP	None
	1.2.840.10008.5.1.4.1.1.6.1	JPEG Lossless, Non-Hierarchical (Process 14)	1.2.840.10008.1.2.4.57	SCP	None
	1.2.840.10008.5.1.4.1.1.6.1	JPEG Lossless, Non-Hierarchical, First-Order Prediction (Process 14 [Selection Value 1])	1.2.840.10008.1.2.4.70	SCP	None
	1.2.840.10008.5.1.4.1.1.6.1	JPEG 2000 Image Compression (Lossless Only)	1.2.840.10008.1.2.4.90	SCP	None
	1.2.840.10008.5.1.4.1.1.6.1	JPEG 2000 Image Compression	1.2.840.10008.1.2.4.991	SCP	None

Table 7: Acceptable Presentation Contexts for DICOM Server (continued)

Abstract Syntax		Transfer Syntax		Role	Ext. Neg.
Name	UID	Name	UID		
US Image (Retired)	1.2.840.10008.5.1.4.1.1.6	DICOM Implicit VR Little Endian	1.2.840.10008.1.2	SCP	None
	1.2.840.10008.5.1.4.1.1.6	DICOM Explicit VR Little Endian	1.2.840.10008.1.2.1	SCP	None
	1.2.840.10008.5.1.4.1.1.6	DICOM Explicit VR Big Endian	1.2.840.10008.1.2.2	SCP	None
	1.2.840.10008.5.1.4.1.1.6	JPEG Baseline (Process 1)	1.2.840.10008.1.2.4.50	SCP	None
	1.2.840.10008.5.1.4.1.1.6	JPEG Extended (Process 2 & 4)	1.2.840.10008.1.2.4.51	SCP	None
	1.2.840.10008.5.1.4.1.1.6	JPEG Lossless, Non-Hierarchical (Process 14)	1.2.840.10008.1.2.4.57	SCP	None
	1.2.840.10008.5.1.4.1.1.6	JPEG Lossless, Non-Hierarchical, First-Order Prediction (Process 14 [Selection Value 1])	1.2.840.10008.1.2.4.70	SCP	None
	1.2.840.10008.5.1.4.1.1.6	JPEG 2000 Image Compression (Lossless Only)	1.2.840.10008.1.2.4.90	SCP	None
	1.2.840.10008.5.1.4.1.1.6	JPEG 2000 Image Compression	1.2.840.10008.1.2.4.991	SCP	None

Table 7: Acceptable Presentation Contexts for DICOM Server (continued)

Abstract Syntax		Transfer Syntax		Role	Ext. Neg.
Name	UID	Name	UID		
US Multi Frame Image	1.2.840.10008.5.1.4.1.1.3.1	DICOM Implicit VR Little Endian	1.2.840.10008.1.2	SCP	None
	1.2.840.10008.5.1.4.1.1.3.1	DICOM Explicit VR Little Endian	1.2.840.10008.1.2.1	SCP	None
	1.2.840.10008.5.1.4.1.1.3.1	DICOM Explicit VR Big Endian	1.2.840.10008.1.2.2	SCP	None
	1.2.840.10008.5.1.4.1.1.3.1	JPEG Baseline (Process 1)	1.2.840.10008.1.2.4.50	SCP	None
	1.2.840.10008.5.1.4.1.1.3.1	JPEG Extended (Process 2 & 4)	1.2.840.10008.1.2.4.51	SCP	None
	1.2.840.10008.5.1.4.1.1.3.1	JPEG Lossless, Non-Hierarchical (Process 14)	1.2.840.10008.1.2.4.57	SCP	None
	1.2.840.10008.5.1.4.1.1.3.1	JPEG Lossless, Non-Hierarchical, First-Order Prediction (Process 14 [Selection Value 1])	1.2.840.10008.1.2.4.70	SCP	None
	1.2.840.10008.5.1.4.1.1.3.1	JPEG 2000 Image Compression (Lossless Only)	1.2.840.10008.1.2.4.90	SCP	None
	1.2.840.10008.5.1.4.1.1.3.1	JPEG 2000 Image Compression	1.2.840.10008.1.2.4.991	SCP	None

Table 7: Acceptable Presentation Contexts for DICOM Server (continued)

Abstract Syntax		Transfer Syntax		Role	Ext. Neg.
Name	UID	Name	UID		
US Multi Frame Image (Retired)	1.2.840.10008.5.1.4.1.1.3	DICOM Implicit VR Little Endian	1.2.840.10008.1.2	SCP	None
	1.2.840.10008.5.1.4.1.1.3	DICOM Explicit VR Little Endian	1.2.840.10008.1.2.1	SCP	None
	1.2.840.10008.5.1.4.1.1.3	DICOM Explicit VR Big Endian	1.2.840.10008.1.2.2	SCP	None
	1.2.840.10008.5.1.4.1.1.3	JPEG Baseline (Process 1)	1.2.840.10008.1.2.4.50	SCP	None
	1.2.840.10008.5.1.4.1.1.3	JPEG Extended (Process 2 & 4)	1.2.840.10008.1.2.4.51	SCP	None
	1.2.840.10008.5.1.4.1.1.3	JPEG Lossless, Non-Hierarchical (Process 14)	1.2.840.10008.1.2.4.57	SCP	None
	1.2.840.10008.5.1.4.1.1.3	JPEG Lossless, Non-Hierarchical, First-Order Prediction (Process 14 [Selection Value 1])	1.2.840.10008.1.2.4.70	SCP	None
	1.2.840.10008.5.1.4.1.1.3	JPEG 2000 Image Compression (Lossless Only)	1.2.840.10008.1.2.4.90	SCP	None
	1.2.840.10008.5.1.4.1.1.3	JPEG 2000 Image Compression	1.2.840.10008.1.2.4.991	SCP	None

Table 7: Acceptable Presentation Contexts for DICOM Server (continued)

Abstract Syntax		Transfer Syntax		Role	Ext. Neg.
Name	UID	Name	UID		
DX Image for Presentation	1.2.840.10008.5.1.4.1.1.1.1	DICOM Implicit VR Little Endian	1.2.840.10008.1.2	SCP	None
	1.2.840.10008.5.1.4.1.1.1.1	DICOM Implicit VR Little Endian	1.2.840.10008.1.2.1	SCP	None
	1.2.840.10008.5.1.4.1.1.1.1	DICOM Implicit VR Little Endian	1.2.840.10008.1.2.2	SCP	None
	1.2.840.10008.5.1.4.1.1.1.1	JPEG Baseline (Process 1)	1.2.840.10008.1.2.4.50	SCP	None
	1.2.840.10008.5.1.4.1.1.1.1	JPEG Extended (Process 2 & 4)	1.2.840.10008.1.2.4.51	SCP	None
	1.2.840.10008.5.1.4.1.1.1.1	JPEG Lossless, Non-Hierarchical (Process 14)	1.2.840.10008.1.2.4.57	SCP	None
	1.2.840.10008.5.1.4.1.1.1.1	JPEG Lossless, Non-Hierarchical, First-Order Prediction (Process 14 [Selection Value 1])	1.2.840.10008.1.2.4.70	SCP	None
	1.2.840.10008.5.1.4.1.1.1.1	JPEG 2000 Image Compression (Lossless Only)	1.2.840.10008.1.2.4.90	SCP	None
	1.2.840.10008.5.1.4.1.1.1.1	JPEG 2000 Image Compression	1.2.840.10008.1.2.4.991	SCP	None

Table 7: Acceptable Presentation Contexts for DICOM Server (continued)

Abstract Syntax		Transfer Syntax		Role	Ext. Neg.
Name	UID	Name	UID		
DX Image for Processing	1.2.840.10008.5.1.4.1.1.1.1.1	DICOM Implicit VR Little Endian	1.2.840.10008.1.2	SCP	None
	1.2.840.10008.5.1.4.1.1.1.1.1	DICOM Implicit VR Little Endian	1.2.840.10008.1.2.1	SCP	None
	1.2.840.10008.5.1.4.1.1.1.1.1	DICOM Implicit VR Little Endian	1.2.840.10008.1.2.2	SCP	None
	1.2.840.10008.5.1.4.1.1.1.1.1	JPEG Baseline (Process 1)	1.2.840.10008.1.2.4.50	SCP	None
	1.2.840.10008.5.1.4.1.1.1.1.1	JPEG Extended (Process 2 & 4)	1.2.840.10008.1.2.4.51	SCP	None
	1.2.840.10008.5.1.4.1.1.1.1.1	JPEG Lossless, Non-Hierarchical (Process 14)	1.2.840.10008.1.2.4.57	SCP	None
	1.2.840.10008.5.1.4.1.1.1.1.1	JPEG Lossless, Non-Hierarchical, First-Order Prediction (Process 14 [Selection Value 1])	1.2.840.10008.1.2.4.70	SCP	None
	1.2.840.10008.5.1.4.1.1.1.1.1	JPEG 2000 Image Compression (Lossless Only)	1.2.840.10008.1.2.4.90	SCP	None
	1.2.840.10008.5.1.4.1.1.1.1.1	JPEG 2000 Image Compression	1.2.840.10008.1.2.4.991	SCP	None

Table 7: Acceptable Presentation Contexts for DICOM Server (continued)

Abstract Syntax		Transfer Syntax		Role	Ext. Neg.
Name	UID	Name	UID		
MG Image for Presentation	1.2.840.10008.5.1.4.1.1.1.2	DICOM Implicit VR Little Endian	1.2.840.10008.1.2	SCP	None
	1.2.840.10008.5.1.4.1.1.1.2	DICOM Explicit VR Little Endian	1.2.840.10008.1.2.1	SCP	None
	1.2.840.10008.5.1.4.1.1.1.2	DICOM Explicit VR Big Endian	1.2.840.10008.1.2.2	SCP	None
	1.2.840.10008.5.1.4.1.1.1.2	JPEG Baseline (Process 1)	1.2.840.10008.1.2.4.50	SCP	None
	1.2.840.10008.5.1.4.1.1.1.2	JPEG Extended (Process 2 & 4)	1.2.840.10008.1.2.4.51	SCP	None
	1.2.840.10008.5.1.4.1.1.1.2	JPEG Lossless, Non-Hierarchical (Process 14)	1.2.840.10008.1.2.4.57	SCP	None
	1.2.840.10008.5.1.4.1.1.1.2	JPEG Lossless, Non-Hierarchical, First-Order Prediction (Process 14 [Selection Value 1])	1.2.840.10008.1.2.4.70	SCP	None
	1.2.840.10008.5.1.4.1.1.1.2	JPEG 2000 Image Compression (Lossless Only)	1.2.840.10008.1.2.4.90	SCP	None
	1.2.840.10008.5.1.4.1.1.1.2	JPEG 2000 Image Compression	1.2.840.10008.1.2.4.991	SCP	None

Table 7: Acceptable Presentation Contexts for DICOM Server (continued)

Abstract Syntax		Transfer Syntax		Role	Ext. Neg.
Name	UID	Name	UID		
MG Image for Processing	1.2.840.10008.5.1.4.1.1.1.2.1	DICOM Implicit VR Little Endian	1.2.840.10008.1.2	SCP	None
	1.2.840.10008.5.1.4.1.1.1.2.1	DICOM Explicit VR Little Endian	1.2.840.10008.1.2.1	SCP	None
	1.2.840.10008.5.1.4.1.1.1.2.1	DICOM Explicit VR Big Endian	1.2.840.10008.1.2.2	SCP	None
	1.2.840.10008.5.1.4.1.1.1.2.1	JPEG Baseline (Process 1)	1.2.840.10008.1.2.4.50	SCP	None
	1.2.840.10008.5.1.4.1.1.1.2.1	JPEG Extended (Process 2 & 4)	1.2.840.10008.1.2.4.51	SCP	None
	1.2.840.10008.5.1.4.1.1.1.2.1	JPEG Lossless, Non-Hierarchical (Process 14)	1.2.840.10008.1.2.4.57	SCP	None
	1.2.840.10008.5.1.4.1.1.1.2.1	JPEG Lossless, Non-Hierarchical, First-Order Prediction (Process 14 [Selection Value 1])	1.2.840.10008.1.2.4.70	SCP	None
	1.2.840.10008.5.1.4.1.1.1.2.1	JPEG 2000 Image Compression (Lossless Only)	1.2.840.10008.1.2.4.90	SCP	None
	1.2.840.10008.5.1.4.1.1.1.2.1	JPEG 2000 Image Compression	1.2.840.10008.1.2.4.991	SCP	None

Table 7: Acceptable Presentation Contexts for DICOM Server (continued)

Abstract Syntax		Transfer Syntax		Role	Ext. Neg.
Name	UID	Name	UID		
IO Image for Presentation	1.2.840.10008.5.1.4.1.1.1.3	DICOM Implicit VR Little Endian	1.2.840.10008.1.2	SCP	None
	1.2.840.10008.5.1.4.1.1.1.3	DICOM Explicit VR Little Endian	1.2.840.10008.1.2.1	SCP	None
	1.2.840.10008.5.1.4.1.1.1.3	DICOM Explicit VR Big Endian	1.2.840.10008.1.2.2	SCP	None
	1.2.840.10008.5.1.4.1.1.1.3	JPEG Baseline (Process 1)	1.2.840.10008.1.2.4.50	SCP	None
	1.2.840.10008.5.1.4.1.1.1.3	JPEG Extended (Process 2 & 4)	1.2.840.10008.1.2.4.51	SCP	None
	1.2.840.10008.5.1.4.1.1.1.3	JPEG Lossless, Non-Hierarchical (Process 14)	1.2.840.10008.1.2.4.57	SCP	None
	1.2.840.10008.5.1.4.1.1.1.3	JPEG Lossless, Non-Hierarchical, First-Order Prediction (Process 14 [Selection Value 1])	1.2.840.10008.1.2.4.70	SCP	None
	1.2.840.10008.5.1.4.1.1.1.3	JPEG 2000 Image Compression (Lossless Only)	1.2.840.10008.1.2.4.90	SCP	None
	1.2.840.10008.5.1.4.1.1.1.3	JPEG 2000 Image Compression	1.2.840.10008.1.2.4.991	SCP	None

Table 7: Acceptable Presentation Contexts for DICOM Server (continued)

Abstract Syntax		Transfer Syntax		Role	Ext. Neg.
Name	UID	Name	UID		
IO Image for Processing	1.2.840.10008.5.1.4.1.1.1.3.1	DICOM Implicit VR Little Endian	1.2.840.10008.1.2	SCP	None
	1.2.840.10008.5.1.4.1.1.1.3.1	DICOM Explicit VR Little Endian	1.2.840.10008.1.2.1	SCP	None
	1.2.840.10008.5.1.4.1.1.1.3.1	DICOM Explicit VR Big Endian	1.2.840.10008.1.2.2	SCP	None
	1.2.840.10008.5.1.4.1.1.1.3.1	JPEG Baseline (Process 1)	1.2.840.10008.1.2.4.50	SCP	None
	1.2.840.10008.5.1.4.1.1.1.3.1	JPEG Extended (Process 2 & 4)	1.2.840.10008.1.2.4.51	SCP	None
	1.2.840.10008.5.1.4.1.1.1.3.1	JPEG Lossless, Non-Hierarchical (Process 14)	1.2.840.10008.1.2.4.57	SCP	None
	1.2.840.10008.5.1.4.1.1.1.3.1	JPEG Lossless, Non-Hierarchical, First-Order Prediction (Process 14 [Selection Value 1])	1.2.840.10008.1.2.4.70	SCP	None
	1.2.840.10008.5.1.4.1.1.1.3.1	JPEG 2000 Image Compression (Lossless Only)	1.2.840.10008.1.2.4.90	SCP	None
	1.2.840.10008.5.1.4.1.1.1.3.1	JPEG 2000 Image Compression	1.2.840.10008.1.2.4.991	SCP	None

Table 7: Acceptable Presentation Contexts for DICOM Server (continued)

Abstract Syntax		Transfer Syntax		Role	Ext. Neg.
Name	UID	Name	UID		
RT Image Storage	1.2.840.10008.5.1.4.1.1.481.1	DICOM Implicit VR Little Endian	1.2.840.10008.1.2	SCP	None
	1.2.840.10008.5.1.4.1.1.481.1	DICOM Explicit VR Little Endian	1.2.840.10008.1.2.1	SCP	None
	1.2.840.10008.5.1.4.1.1.481.1	DICOM Explicit VR Big Endian	1.2.840.10008.1.2.2	SCP	None
	1.2.840.10008.5.1.4.1.1.481.1	JPEG Baseline (Process 1)	1.2.840.10008.1.2.4.50	SCP	None
	1.2.840.10008.5.1.4.1.1.481.1	JPEG Extended (Process 2 & 4)	1.2.840.10008.1.2.4.51	SCP	None
	1.2.840.10008.5.1.4.1.1.481.1	JPEG Lossless, Non-Hierarchical (Process 14)	1.2.840.10008.1.2.4.57	SCP	None
	1.2.840.10008.5.1.4.1.1.481.1	JPEG Lossless, Non-Hierarchical, First-Order Prediction (Process 14 [Selection Value 1])	1.2.840.10008.1.2.4.70	SCP	None
	1.2.840.10008.5.1.4.1.1.481.1	JPEG 2000 Image Compression (Lossless Only)	1.2.840.10008.1.2.4.90	SCP	None
	1.2.840.10008.5.1.4.1.1.481.1	JPEG 2000 Image Compression	1.2.840.10008.1.2.4.991	SCP	None

Table 7: Acceptable Presentation Contexts for DICOM Server (continued)

Abstract Syntax		Transfer Syntax		Role	Ext. Neg.
Name	UID	Name	UID		
VL Endoscopic Image Storage	1.2.840.10008.5.1.4.1.1.77.1.1	DICOM Implicit VR Little Endian	1.2.840.10008.1.2	SCP	None
	1.2.840.10008.5.1.4.1.1.77.1.1	DICOM Explicit VR Little Endian	1.2.840.10008.1.2.1	SCP	None
	1.2.840.10008.5.1.4.1.1.77.1.1	DICOM Explicit VR Big Endian	1.2.840.10008.1.2.2	SCP	None
	1.2.840.10008.5.1.4.1.1.77.1.1	JPEG Baseline (Process 1)	1.2.840.10008.1.2.4.50	SCP	None
	1.2.840.10008.5.1.4.1.1.77.1.1	JPEG Extended (Process 2 & 4)	1.2.840.10008.1.2.4.51	SCP	None
	1.2.840.10008.5.1.4.1.1.77.1.1	JPEG Lossless, Non-Hierarchical (Process 14)	1.2.840.10008.1.2.4.57	SCP	None
	1.2.840.10008.5.1.4.1.1.77.1.1	JPEG Lossless, Non-Hierarchical, First-Order Prediction (Process 14 [Selection Value 1])	1.2.840.10008.1.2.4.70	SCP	None
	1.2.840.10008.5.1.4.1.1.77.1.2	DICOM Implicit VR Little Endian	1.2.840.10008.1.2	SCP	None
	1.2.840.10008.5.1.4.1.1.77.1.1	JPEG 2000 Image Compression (Lossless Only)	1.2.840.10008.1.2.4.90	SCP	None
	1.2.840.10008.5.1.4.1.1.77.1.2	JPEG 2000 Image Compression	1.2.840.10008.1.2.4.991	SCP	None

Table 7: Acceptable Presentation Contexts for DICOM Server (continued)

Abstract Syntax		Transfer Syntax		Role	Ext. Neg.
Name	UID	Name	UID		
VL Microscopic Image Storage	1.2.840.10008.5.1.4.1.1.77.1.2	DICOM Explicit VR Little Endian	1.2.840.10008.1.2.1	SCP	None
	1.2.840.10008.5.1.4.1.1.77.1.2	DICOM Explicit VR Big Endian	1.2.840.10008.1.2.2	SCP	None
	1.2.840.10008.5.1.4.1.1.77.1.2	JPEG Baseline (Process 1)	1.2.840.10008.1.2.4.50	SCP	None
	1.2.840.10008.5.1.4.1.1.77.1.2	JPEG Extended (Process 2 & 4)	1.2.840.10008.1.2.4.51	SCP	None
	1.2.840.10008.5.1.4.1.1.77.1.2	JPEG Lossless, Non-Hierarchical (Process 14)	1.2.840.10008.1.2.4.57	SCP	None
	1.2.840.10008.5.1.4.1.1.77.1.2	JPEG Lossless, Non-Hierarchical, First-Order Prediction (Process 14 [Selection Value 1])	1.2.840.10008.1.2.4.70	SCP	None
	1.2.840.10008.5.1.4.1.1.77.1.2	JPEG 2000 Image Compression (Lossless Only)	1.2.840.10008.1.2.4.90	SCP	None
	1.2.840.10008.5.1.4.1.1.77.1.2	JPEG 2000 Image Compression	1.2.840.10008.1.2.4.991	SCP	None

Table 7: Acceptable Presentation Contexts for DICOM Server (continued)

Abstract Syntax		Transfer Syntax		Role	Ext. Neg.
Name	UID	Name	UID		
VL Slide Coordinates Microscopic Image Storage	1.2.840.10008.5.1.4.1.1.77.1.3	DICOM Implicit VR Little Endian	1.2.840.10008.1.2	SCP	None
	1.2.840.10008.5.1.4.1.1.77.1.3	DICOM Explicit VR Little Endian	1.2.840.10008.1.2.1	SCP	None
	1.2.840.10008.5.1.4.1.1.77.1.3	DICOM Explicit VR Big Endian	1.2.840.10008.1.2.2	SCP	None
	1.2.840.10008.5.1.4.1.1.77.1.3	JPEG Baseline (Process 1)	1.2.840.10008.1.2.4.50	SCP	None
	1.2.840.10008.5.1.4.1.1.77.1.3	JPEG Extended (Process 2 & 4)	1.2.840.10008.1.2.4.51	SCP	None
	1.2.840.10008.5.1.4.1.1.77.1.3	JPEG Lossless, Non-Hierarchical (Process 14)	1.2.840.10008.1.2.4.57	SCP	None
	1.2.840.10008.5.1.4.1.1.77.1.3	JPEG Lossless, Non-Hierarchical, First-Order Prediction (Process 14 [Selection Value 1])	1.2.840.10008.1.2.4.70	SCP	None
	1.2.840.10008.5.1.4.1.1.77.1.3	JPEG 2000 Image Compression (Lossless Only)	1.2.840.10008.1.2.4.90	SCP	None
	1.2.840.10008.5.1.4.1.1.77.1.3	JPEG 2000 Image Compression	1.2.840.10008.1.2.4.991	SCP	None

Table 7: Acceptable Presentation Contexts for DICOM Server (continued)

Abstract Syntax		Transfer Syntax		Role	Ext. Neg.
Name	UID	Name	UID		
VL Photographic Image Storage	1.2.840.10008.5.1.4.1.1.77.1.4	DICOM Implicit VR Little Endian	1.2.840.10008.1.2	SCP	None
	1.2.840.10008.5.1.4.1.1.77.1.4	DICOM Explicit VR Little Endian	1.2.840.10008.1.2.1	SCP	None
	1.2.840.10008.5.1.4.1.1.77.1.4	DICOM Explicit VR Big Endian	1.2.840.10008.1.2.2	SCP	None
	1.2.840.10008.5.1.4.1.1.77.1.4	JPEG Baseline (Process 1)	1.2.840.10008.1.2.4.50	SCP	None
	1.2.840.10008.5.1.4.1.1.77.1.4	JPEG Extended (Process 2 & 4)	1.2.840.10008.1.2.4.51	SCP	None
	1.2.840.10008.5.1.4.1.1.77.1.4	JPEG Lossless, Non-Hierarchical (Process 14)	1.2.840.10008.1.2.4.57	SCP	None
	1.2.840.10008.5.1.4.1.1.77.1.4	JPEG Lossless, Non-Hierarchical, First-Order Prediction (Process 14 [Selection Value 1])	1.2.840.10008.1.2.4.70	SCP	None
	1.2.840.10008.5.1.4.1.1.77.1.4	JPEG 2000 Image Compression (Lossless Only)	1.2.840.10008.1.2.4.90	SCP	None
	1.2.840.10008.5.1.4.1.1.77.1.4	JPEG 2000 Image Compression	1.2.840.10008.1.2.4.991	SCP	None

Table 7: Acceptable Presentation Contexts for DICOM Server (continued)

Abstract Syntax		Transfer Syntax		Role	Ext. Neg.
Name	UID	Name	UID		
X-Ray Angiographic Bi-Plane Image Storage	1.2.840.10008.5.1.4.1.1.12.3	DICOM Implicit VR Little Endian	1.2.840.10008.1.2	SCP	None
	1.2.840.10008.5.1.4.1.1.12.3	DICOM Explicit VR Little Endian	1.2.840.10008.1.2.1	SCP	None
	1.2.840.10008.5.1.4.1.1.12.3	DICOM Explicit VR Big Endian	1.2.840.10008.1.2.2	SCP	None
	1.2.840.10008.5.1.4.1.1.12.3	JPEG Baseline (Process 1)	1.2.840.10008.1.2.4.50	SCP	None
	1.2.840.10008.5.1.4.1.1.12.3	JPEG Extended (Process 2 & 4)	1.2.840.10008.1.2.4.51	SCP	None
	1.2.840.10008.5.1.4.1.1.12.3	JPEG Lossless, Non-Hierarchical (Process 14)	1.2.840.10008.1.2.4.57	SCP	None
	1.2.840.10008.5.1.4.1.1.12.3	JPEG Lossless, Non-Hierarchical, First-Order Prediction (Process 14 [Selection Value 1])	1.2.840.10008.1.2.4.70	SCP	None
	1.2.840.10008.5.1.4.1.1.12.3	JPEG 2000 Image Compression (Lossless Only)	1.2.840.10008.1.2.4.90	SCP	None
	1.2.840.10008.5.1.4.1.1.12.3	JPEG 2000 Image Compression	1.2.840.10008.1.2.4.991	SCP	None

Table 7: Acceptable Presentation Contexts for DICOM Server (continued)

Abstract Syntax		Transfer Syntax		Role	Ext. Neg.
Name	UID	Name	UID		
Positron Emission Tomography	1.2.840.10008.5.1.4.1.1.128	DICOM Implicit VR Little Endian	1.2.840.10008.1.2	SCP	None
	1.2.840.10008.5.1.4.1.1.128	DICOM Explicit VR Little Endian	1.2.840.10008.1.2.1	SCP	None
	1.2.840.10008.5.1.4.1.1.128	DICOM Explicit VR Big Endian	1.2.840.10008.1.2.2	SCP	None
	1.2.840.10008.5.1.4.1.1.128	JPEG Baseline (Process 1)	1.2.840.10008.1.2.4.50	SCP	None
	1.2.840.10008.5.1.4.1.1.128	JPEG Extended (Process 2 & 4)	1.2.840.10008.1.2.4.51	SCP	None
	1.2.840.10008.5.1.4.1.1.128	JPEG Lossless, Non-Hierarchical (Process 14)	1.2.840.10008.1.2.4.57	SCP	None
	1.2.840.10008.5.1.4.1.1.128	JPEG Lossless, Non-Hierarchical, First-Order Prediction (Process 14 [Selection Value 1])	1.2.840.10008.1.2.4.70	SCP	None
	1.2.840.10008.5.1.4.1.1.128	JPEG 2000 Image Compression (Lossless Only)	1.2.840.10008.1.2.4.90	SCP	None
	1.2.840.10008.5.1.4.1.1.128	JPEG 2000 Image Compression	1.2.840.10008.1.2.4.991	SCP	None

Table 7: Acceptable Presentation Contexts for DICOM Server (continued)

Abstract Syntax		Transfer Syntax		Role	Ext. Neg.
Name	UID	Name	UID		
Stand-alone PET Curve Storage	1.2.840.10008.5.1.4.1.1.129	DICOM Implicit VR Little Endian	1.2.840.10008.1.2	SCP	None
	1.2.840.10008.5.1.4.1.1.129	DICOM Explicit VR Little Endian	1.2.840.10008.1.2.1	SCP	None
	1.2.840.10008.5.1.4.1.1.129	DICOM Explicit VR Big Endian	1.2.840.10008.1.2.2	SCP	None
	1.2.840.10008.5.1.4.1.1.129	JPEG Baseline (Process 1)	1.2.840.10008.1.2.4.50	SCP	None
	1.2.840.10008.5.1.4.1.1.129	JPEG Extended (Process 2 & 4)	1.2.840.10008.1.2.4.51	SCP	None
	1.2.840.10008.5.1.4.1.1.129	JPEG Lossless, Non-Hierarchical (Process 14)	1.2.840.10008.1.2.4.57	SCP	None
	1.2.840.10008.5.1.4.1.1.129	JPEG Lossless, Non-Hierarchical, First-Order Prediction (Process 14 [Selection Value 1])	1.2.840.10008.1.2.4.70	SCP	None
	1.2.840.10008.5.1.4.1.1.129	JPEG 2000 Image Compression (Lossless Only)	1.2.840.10008.1.2.4.90	SCP	None
	1.2.840.10008.5.1.4.1.1.129	JPEG 2000 Image Compression	1.2.840.10008.1.2.4.991	SCP	None

Table 7: Acceptable Presentation Contexts for DICOM Server (continued)

Abstract Syntax		Transfer Syntax		Role	Ext. Neg.
Name	UID	Name	UID		
Storage Commitment Push Model	1.2.840.10008.1.20.1	DICOM Implicit VR Little Endian	1.2.840.10008.1.2	SCP	None
	1.2.840.10008.1.20.1	DICOM Explicit VR Little Endian	1.2.840.10008.1.2.1	SCP	None
	1.2.840.10008.1.20.1	DICOM Explicit VR Big Endian	1.2.840.10008.1.2.2	SCP	None
	1.2.840.10008.1.20.1	JPEG Baseline (Process 1)	1.2.840.10008.1.2.4.50	SCP	None
	1.2.840.10008.1.20.1	JPEG Extended (Process 2 & 4)	1.2.840.10008.1.2.4.51	SCP	None
	1.2.840.10008.1.20.1	JPEG Lossless, Non-Hierarchical (Process 14)	1.2.840.10008.1.2.4.57	SCP	None
	1.2.840.10008.1.20.1	JPEG Lossless, Non-Hierarchical, First-Order Prediction (Process 14 [Selection Value 1])	1.2.840.10008.1.2.4.70	SCP	None
	1.2.840.10008.1.20.1	JPEG 2000 Image Compression (Lossless Only)	1.2.840.10008.1.2.4.90	SCP	None
	1.2.840.10008.1.20.1	JPEG 2000 Image Compression	1.2.840.10008.1.2.4.991	SCP	None

Table 7: Acceptable Presentation Contexts for DICOM Server (continued)

Abstract Syntax		Transfer Syntax		Role	Ext. Neg.
Name	UID	Name	UID		
Modality Performed Procedure Step	1.2.840.10008.3.1.2.3.3	DICOM Implicit VR Little Endian	1.2.840.10008.1.2	SCP	None
	1.2.840.10008.3.1.2.3.3	DICOM Explicit VR Little Endian	1.2.840.10008.1.2.1	SCP	None
	1.2.840.10008.3.1.2.3.3	DICOM Explicit VR Big Endian	1.2.840.10008.1.2.2	SCP	None
	1.2.840.10008.3.1.2.3.3	JPEG Baseline (Process 1)	1.2.840.10008.1.2.4.50	SCP	None
	1.2.840.10008.3.1.2.3.3	JPEG Extended (Process 2 & 4)	1.2.840.10008.1.2.4.51	SCP	None
	1.2.840.10008.3.1.2.3.3	JPEG Lossless, Non-Hierarchical (Process 14)	1.2.840.10008.1.2.4.57	SCP	None
	1.2.840.10008.3.1.2.3.3	JPEG Lossless, Non-Hierarchical, First-Order Prediction (Process 14 [Selection Value 1])	1.2.840.10008.1.2.4.70	SCP	None
	1.2.840.10008.3.1.2.3.3	JPEG 2000 Image Compression (Lossless Only)	1.2.840.10008.1.2.4.90	SCP	None
	1.2.840.10008.3.1.2.3.3	JPEG 2000 Image Compression	1.2.840.10008.1.2.4.991	SCP	None

Table 7: Acceptable Presentation Contexts for DICOM Server (continued)

Abstract Syntax		Transfer Syntax		Role	Ext. Neg.
Name	UID	Name	UID		
Key Object Selection Document	1.2.840.10008.5.1.4.1.1.88.59	DICOM Implicit VR Little Endian	1.2.840.10008.1.2	SCP	None
	1.2.840.10008.5.1.4.1.1.88.59	DICOM Explicit VR Little Endian	1.2.840.10008.1.2.1	SCP	None
	1.2.840.10008.5.1.4.1.1.88.59	DICOM Explicit VR Big Endian	1.2.840.10008.1.2.2	SCP	None
	1.2.840.10008.5.1.4.1.1.88.59	JPEG Baseline (Process 1)	1.2.840.10008.1.2.4.50	SCP	None
	1.2.840.10008.5.1.4.1.1.88.59	JPEG Extended (Process 2 & 4)	1.2.840.10008.1.2.4.51	SCP	None
	1.2.840.10008.5.1.4.1.1.88.59	JPEG Lossless, Non-Hierarchical (Process 14)	1.2.840.10008.1.2.4.57	SCP	None
	1.2.840.10008.5.1.4.1.1.88.59	JPEG Lossless, Non-Hierarchical, First-Order Prediction (Process 14 [Selection Value 1])	1.2.840.10008.1.2.4.70	SCP	None
	1.2.840.10008.5.1.4.1.1.88.59	JPEG 2000 Image Compression (Lossless Only)	1.2.840.10008.1.2.4.90	SCP	None
	1.2.840.10008.5.1.4.1.1.88.59	JPEG 2000 Image Compression	1.2.840.10008.1.2.4.991	SCP	None

Table 7: Acceptable Presentation Contexts for DICOM Server (continued)

Abstract Syntax		Transfer Syntax		Role	Ext. Neg.
Name	UID	Name	UID		
RT Dose Storage	1.2.840.10008.5.1.4.1.1.481.2	DICOM Implicit VR Little Endian	1.2.840.10008.1.2	SCP	None
	1.2.840.10008.5.1.4.1.1.481.2	DICOM Explicit VR Little Endian	1.2.840.10008.1.2.1	SCP	None
	1.2.840.10008.5.1.4.1.1.481.2	DICOM Explicit VR Big Endian	1.2.840.10008.1.2.2	SCP	None
	1.2.840.10008.5.1.4.1.1.481.2	JPEG Baseline (Process 1)	1.2.840.10008.1.2.4.50	SCP	None
	1.2.840.10008.5.1.4.1.1.481.2	JPEG Extended (Process 2 & 4)	1.2.840.10008.1.2.4.51	SCP	None
	1.2.840.10008.5.1.4.1.1.481.2	JPEG Lossless, Non-Hierarchical (Process 14)	1.2.840.10008.1.2.4.57	SCP	None
	1.2.840.10008.5.1.4.1.1.481.2	JPEG Lossless, Non-Hierarchical, First-Order Prediction (Process 14 [Selection Value 1])	1.2.840.10008.1.2.4.70	SCP	None
	1.2.840.10008.5.1.4.1.1.481.2	JPEG 2000 Image Compression (Lossless Only)	1.2.840.10008.1.2.4.90	SCP	None
	1.2.840.10008.5.1.4.1.1.481.2	JPEG 2000 Image Compression	1.2.840.10008.1.2.4.991	SCP	None

Table 7: Acceptable Presentation Contexts for DICOM Server (continued)

Abstract Syntax		Transfer Syntax		Role	Ext. Neg.
Name	UID	Name	UID		
RT Beams Treatment Record Storage	1.2.840.10008.5.1.4.1.1.481.4	DICOM Implicit VR Little Endian	1.2.840.10008.1.2	SCP	None
	1.2.840.10008.5.1.4.1.1.481.4	DICOM Explicit VR Little Endian	1.2.840.10008.1.2.1	SCP	None
	1.2.840.10008.5.1.4.1.1.481.4	DICOM Explicit VR Big Endian	1.2.840.10008.1.2.2	SCP	None
	1.2.840.10008.5.1.4.1.1.481.4	JPEG Baseline (Process 1)	1.2.840.10008.1.2.4.50	SCP	None
	1.2.840.10008.5.1.4.1.1.481.4	JPEG Extended (Process 2 & 4)	1.2.840.10008.1.2.4.51	SCP	None
	1.2.840.10008.5.1.4.1.1.481.4	JPEG Lossless, Non-Hierarchical (Process 14)	1.2.840.10008.1.2.4.57	SCP	None
	1.2.840.10008.5.1.4.1.1.481.4	JPEG Lossless, Non-Hierarchical, First-Order Prediction (Process 14 [Selection Value 1])	1.2.840.10008.1.2.4.70	SCP	None
	1.2.840.10008.5.1.4.1.1.481.4	JPEG 2000 Image Compression (Lossless Only)	1.2.840.10008.1.2.4.90	SCP	None
	1.2.840.10008.5.1.4.1.1.481.4	JPEG 2000 Image Compression	1.2.840.10008.1.2.4.991	SCP	None

Table 7: Acceptable Presentation Contexts for DICOM Server (continued)

Abstract Syntax		Transfer Syntax		Role	Ext. Neg.
Name	UID	Name	UID		
RT Plan Storage	1.2.840.10008.5.1.4.1.1.481.5	DICOM Implicit VR Little Endian	1.2.840.10008.1.2	SCP	None
	1.2.840.10008.5.1.4.1.1.481.5	DICOM Explicit VR Little Endian	1.2.840.10008.1.2.1	SCP	None
	1.2.840.10008.5.1.4.1.1.481.5	DICOM Explicit VR Big Endian	1.2.840.10008.1.2.2	SCP	None
	1.2.840.10008.5.1.4.1.1.481.5	JPEG Baseline (Process 1)	1.2.840.10008.1.2.4.50	SCP	None
	1.2.840.10008.5.1.4.1.1.481.5	JPEG Extended (Process 2 & 4)	1.2.840.10008.1.2.4.51	SCP	None
	1.2.840.10008.5.1.4.1.1.481.5	JPEG Lossless, Non-Hierarchical (Process 14)	1.2.840.10008.1.2.4.57	SCP	None
	1.2.840.10008.5.1.4.1.1.481.5	JPEG Lossless, Non-Hierarchical, First-Order Prediction (Process 14 [Selection Value 1])	1.2.840.10008.1.2.4.70	SCP	None
	1.2.840.10008.5.1.4.1.1.481.5	JPEG 2000 Image Compression (Lossless Only)	1.2.840.10008.1.2.4.90	SCP	None
	1.2.840.10008.5.1.4.1.1.481.5	JPEG 2000 Image Compression	1.2.840.10008.1.2.4.991	SCP	None

Table 7: Acceptable Presentation Contexts for DICOM Server (continued)

Abstract Syntax		Transfer Syntax		Role	Ext. Neg.
Name	UID	Name	UID		
RT Brachy Treatment Record Storage	1.2.840.10008.5.1.4.1.1.481.6	DICOM Implicit VR Little Endian	1.2.840.10008.1.2	SCP	None
	1.2.840.10008.5.1.4.1.1.481.6	DICOM Explicit VR Little Endian	1.2.840.10008.1.2.1	SCP	None
	1.2.840.10008.5.1.4.1.1.481.6	DICOM Explicit VR Big Endian	1.2.840.10008.1.2.2	SCP	None
	1.2.840.10008.5.1.4.1.1.481.6	JPEG Baseline (Process 1)	1.2.840.10008.1.2.4.50	SCP	None
	1.2.840.10008.5.1.4.1.1.481.6	JPEG Extended (Process 2 & 4)	1.2.840.10008.1.2.4.51	SCP	None
	1.2.840.10008.5.1.4.1.1.481.6	JPEG Lossless, Non-Hierarchical (Process 14)	1.2.840.10008.1.2.4.57	SCP	None
	1.2.840.10008.5.1.4.1.1.481.6	JPEG Lossless, Non-Hierarchical, First-Order Prediction (Process 14 [Selection Value 1])	1.2.840.10008.1.2.4.70	SCP	None
	1.2.840.10008.5.1.4.1.1.481.6	JPEG 2000 Image Compression (Lossless Only)	1.2.840.10008.1.2.4.90	SCP	None
	1.2.840.10008.5.1.4.1.1.481.6	JPEG 2000 Image Compression	1.2.840.10008.1.2.4.991	SCP	None

Table 7: Acceptable Presentation Contexts for DICOM Server (continued)

Abstract Syntax		Transfer Syntax		Role	Ext. Neg.
Name	UID	Name	UID		
RT Treatment Summary Record Storage	1.2.840.10008.5.1.4.1.1.481.7	DICOM Implicit VR Little Endian	1.2.840.10008.1.2	SCP	None
	1.2.840.10008.5.1.4.1.1.481.7	DICOM Explicit VR Little Endian	1.2.840.10008.1.2.1	SCP	None
	1.2.840.10008.5.1.4.1.1.481.7	DICOM Explicit VR Big Endian	1.2.840.10008.1.2.2	SCP	None
	1.2.840.10008.5.1.4.1.1.481.7	JPEG Baseline (Process 1)	1.2.840.10008.1.2.4.50	SCP	None
	1.2.840.10008.5.1.4.1.1.481.7	JPEG Extended (Process 2 & 4)	1.2.840.10008.1.2.4.51	SCP	None
	1.2.840.10008.5.1.4.1.1.481.7	JPEG Lossless, Non-Hierarchical (Process 14)	1.2.840.10008.1.2.4.57	SCP	None
	1.2.840.10008.5.1.4.1.1.481.7	JPEG Lossless, Non-Hierarchical, First-Order Prediction (Process 14 [Selection Value 1])	1.2.840.10008.1.2.4.70	SCP	None
	1.2.840.10008.5.1.4.1.1.481.7	JPEG 2000 Image Compression (Lossless Only)	1.2.840.10008.1.2.4.90	SCP	None
	1.2.840.10008.5.1.4.1.1.481.7	JPEG 2000 Image Compression	1.2.840.10008.1.2.4.991	SCP	None

Table 7: Acceptable Presentation Contexts for DICOM Server (continued)

Abstract Syntax		Transfer Syntax		Role	Ext. Neg.
Name	UID	Name	UID		
Hardcopy Grayscale Image Storage	1.2.840.10008.5.1.1.29	DICOM Implicit VR Little Endian	1.2.840.10008.1.2	SCP	None
	1.2.840.10008.5.1.1.29	DICOM Explicit VR Little Endian	1.2.840.10008.1.2.1	SCP	None
	1.2.840.10008.5.1.1.29	DICOM Explicit VR Big Endian	1.2.840.10008.1.2.2	SCP	None
	1.2.840.10008.5.1.1.29	JPEG Baseline (Process 1)	1.2.840.10008.1.2.4.50	SCP	None
	1.2.840.10008.5.1.1.29	JPEG Extended (Process 2 & 4)	1.2.840.10008.1.2.4.51	SCP	None
	1.2.840.10008.5.1.1.29	JPEG Lossless, Non-Hierarchical (Process 14)	1.2.840.10008.1.2.4.57	SCP	None
	1.2.840.10008.5.1.1.29	JPEG Lossless, Non-Hierarchical, First-Order Prediction (Process 14 [Selection Value 1])	1.2.840.10008.1.2.4.70	SCP	None
	1.2.840.10008.5.1.1.29	JPEG 2000 Image Compression (Lossless Only)	1.2.840.10008.1.2.4.90	SCP	None
	1.2.840.10008.5.1.1.29	JPEG 2000 Image Compression	1.2.840.10008.1.2.4.991	SCP	None

Table 7: Acceptable Presentation Contexts for DICOM Server (continued)

Abstract Syntax		Transfer Syntax		Role	Ext. Neg.
Name	UID	Name	UID		
Hardcopy Color Image Storage	1.2.840.10008.5.1.1.30	DICOM Implicit VR Little Endian	1.2.840.10008.1.2	SCP	None
	1.2.840.10008.5.1.1.30	DICOM Explicit VR Little Endian	1.2.840.10008.1.2.1	SCP	None
	1.2.840.10008.5.1.1.30	DICOM Explicit VR Big Endian	1.2.840.10008.1.2.2	SCP	None
	1.2.840.10008.5.1.1.30	JPEG Baseline (Process 1)	1.2.840.10008.1.2.4.50	SCP	None
	1.2.840.10008.5.1.1.30	JPEG Extended (Process 2 & 4)	1.2.840.10008.1.2.4.51	SCP	None
	1.2.840.10008.5.1.1.30	JPEG Lossless, Non-Hierarchical (Process 14)	1.2.840.10008.1.2.4.57	SCP	None
	1.2.840.10008.5.1.1.30	JPEG Lossless, Non-Hierarchical, First-Order Prediction (Process 14 [Selection Value 1])	1.2.840.10008.1.2.4.70	SCP	None
	1.2.840.10008.5.1.1.30	JPEG 2000 Image Compression (Lossless Only)	1.2.840.10008.1.2.4.90	SCP	None
	1.2.840.10008.5.1.1.30	JPEG 2000 Image Compression	1.2.840.10008.1.2.4.991	SCP	None

Table 7: Acceptable Presentation Contexts for DICOM Server (continued)

Abstract Syntax		Transfer Syntax		Role	Ext. Neg.
Name	UID	Name	UID		
Multi-Frame Grayscale Byte Secondary Capture Image Storage	1.2.840.10008.5.1.4.1.1.7.2	DICOM Implicit VR Little Endian	1.2.840.10008.1.2	SCP	None
	1.2.840.10008.5.1.4.1.1.7.2	DICOM Explicit VR Little Endian	1.2.840.10008.1.2.1	SCP	None
	1.2.840.10008.5.1.4.1.1.7.2	DICOM Explicit VR Big Endian	1.2.840.10008.1.2.2	SCP	None
	1.2.840.10008.5.1.4.1.1.7.2	JPEG Baseline (Process 1)	1.2.840.10008.1.2.4.50	SCP	None
	1.2.840.10008.5.1.4.1.1.7.2	JPEG Extended (Process 2 & 4)	1.2.840.10008.1.2.4.51	SCP	None
	1.2.840.10008.5.1.4.1.1.7.2	JPEG Lossless, Non-Hierarchical (Process 14)	1.2.840.10008.1.2.4.57	SCP	None
	1.2.840.10008.5.1.4.1.1.7.2	JPEG Lossless, Non-Hierarchical, First-Order Prediction (Process 14 [Selection Value 1])	1.2.840.10008.1.2.4.70	SCP	None
	1.2.840.10008.5.1.4.1.1.7.2	JPEG 2000 Image Compression (Lossless Only)	1.2.840.10008.1.2.4.90	SCP	None
	1.2.840.10008.5.1.4.1.1.7.2	JPEG 2000 Image Compression	1.2.840.10008.1.2.4.991	SCP	None

Table 7: Acceptable Presentation Contexts for DICOM Server (continued)

Abstract Syntax		Transfer Syntax		Role	Ext. Neg.
Name	UID	Name	UID		
Multi-Frame Grayscale Word Secondary Capture Image Storage	1.2.840.10008.5.1.4.1.1.7.3	DICOM Implicit VR Little Endian	1.2.840.10008.1.2	SCP	None
	1.2.840.10008.5.1.4.1.1.7.3	DICOM Explicit VR Little Endian	1.2.840.10008.1.2.1	SCP	None
	1.2.840.10008.5.1.4.1.1.7.3	DICOM Explicit VR Big Endian	1.2.840.10008.1.2.2	SCP	None
	1.2.840.10008.5.1.4.1.1.7.3	JPEG Baseline (Process 1)	1.2.840.10008.1.2.4.50	SCP	None
	1.2.840.10008.5.1.4.1.1.7.3	JPEG Extended (Process 2 & 4)	1.2.840.10008.1.2.4.51	SCP	None
	1.2.840.10008.5.1.4.1.1.7.3	JPEG Lossless, Non-Hierarchical (Process 14)	1.2.840.10008.1.2.4.57	SCP	None
	1.2.840.10008.5.1.4.1.1.7.3	JPEG Lossless, Non-Hierarchical, First-Order Prediction (Process 14 [Selection Value 1])	1.2.840.10008.1.2.4.70	SCP	None
	1.2.840.10008.5.1.4.1.1.7.3	JPEG 2000 Image Compression (Lossless Only)	1.2.840.10008.1.2.4.90	SCP	None
	1.2.840.10008.5.1.4.1.1.7.3	JPEG 2000 Image Compression	1.2.840.10008.1.2.4.991	SCP	None

Table 7: Acceptable Presentation Contexts for DICOM Server (continued)

Abstract Syntax		Transfer Syntax		Role	Ext. Neg.
Name	UID	Name	UID		
Visible Light Image Storage (Retired)	1.2.840.10008.5.1.4.1.1.77.1	DICOM Implicit VR Little Endian	1.2.840.10008.1.2	SCP	None
	1.2.840.10008.5.1.4.1.1.77.1	DICOM Explicit VR Little Endian	1.2.840.10008.1.2.1	SCP	None
	1.2.840.10008.5.1.4.1.1.77.1	DICOM Explicit VR Big Endian	1.2.840.10008.1.2.2	SCP	None
	1.2.840.10008.5.1.4.1.1.77.1	JPEG Baseline (Process 1)	1.2.840.10008.1.2.4.50	SCP	None
	1.2.840.10008.5.1.4.1.1.77.1	JPEG Extended (Process 2 & 4)	1.2.840.10008.1.2.4.51	SCP	None
	1.2.840.10008.5.1.4.1.1.77.1	JPEG Lossless, Non-Hierarchical (Process 14)	1.2.840.10008.1.2.4.57	SCP	None
	1.2.840.10008.5.1.4.1.1.77.1	JPEG Lossless, Non-Hierarchical, First-Order Prediction (Process 14 [Selection Value 1])	1.2.840.10008.1.2.4.70	SCP	None
	1.2.840.10008.5.1.4.1.1.77.1	JPEG 2000 Image Compression (Lossless Only)	1.2.840.10008.1.2.4.90	SCP	None
	1.2.840.10008.5.1.4.1.1.77.1	JPEG 2000 Image Compression	1.2.840.10008.1.2.4.991	SCP	None

Table 7: Acceptable Presentation Contexts for DICOM Server (continued)

Abstract Syntax		Transfer Syntax		Role	Ext. Neg.
Name	UID	Name	UID		
Visible Light Multi-Frame Image Storage (Retired)	1.2.840.10008.5.1.4.1.1.77.2	DICOM Implicit VR Little Endian	1.2.840.10008.1.2	SCP	None
	1.2.840.10008.5.1.4.1.1.77.2	DICOM Explicit VR Little Endian	1.2.840.10008.1.2.1	SCP	None
	1.2.840.10008.5.1.4.1.1.77.2	DICOM Explicit VR Big Endian	1.2.840.10008.1.2.2	SCP	None
	1.2.840.10008.5.1.4.1.1.77.2	JPEG Baseline (Process 1)	1.2.840.10008.1.2.4.50	SCP	None
	1.2.840.10008.5.1.4.1.1.77.2	JPEG Extended (Process 2 & 4)	1.2.840.10008.1.2.4.51	SCP	None
	1.2.840.10008.5.1.4.1.1.77.2	JPEG Lossless, Non-Hierarchical (Process 14)	1.2.840.10008.1.2.4.57	SCP	None
	1.2.840.10008.5.1.4.1.1.77.2	JPEG Lossless, Non-Hierarchical, First-Order Prediction (Process 14 [Selection Value 1])	1.2.840.10008.1.2.4.70	SCP	None
	1.2.840.10008.5.1.4.1.1.77.2	JPEG 2000 Image Compression (Lossless Only)	1.2.840.10008.1.2.4.90	SCP	None
	1.2.840.10008.5.1.4.1.1.77.2	JPEG 2000 Image Compression	1.2.840.10008.1.2.4.991	SCP	None

Table 7: Acceptable Presentation Contexts for DICOM Server (continued)

Abstract Syntax		Transfer Syntax		Role	Ext. Neg.
Name	UID	Name	UID		
Nuclear Medicine Image Storage (Retired)	1.2.840.10008.5.1.4.1.1.5	DICOM Implicit VR Little Endian	1.2.840.10008.1.2	SCP	None
	1.2.840.10008.5.1.4.1.1.5	DICOM Explicit VR Little Endian	1.2.840.10008.1.2.1	SCP	None
	1.2.840.10008.5.1.4.1.1.5	DICOM Explicit VR Big Endian	1.2.840.10008.1.2.2	SCP	None
	1.2.840.10008.5.1.4.1.1.5	JPEG Baseline (Process 1)	1.2.840.10008.1.2.4.50	SCP	None
	1.2.840.10008.5.1.4.1.1.5	JPEG Extended (Process 2 & 4)	1.2.840.10008.1.2.4.51	SCP	None
	1.2.840.10008.5.1.4.1.1.5	JPEG Lossless, Non-Hierarchical (Process 14)	1.2.840.10008.1.2.4.57	SCP	None
	1.2.840.10008.5.1.4.1.1.5	JPEG Lossless, Non-Hierarchical, First-Order Prediction (Process 14 [Selection Value 1])	1.2.840.10008.1.2.4.70	SCP	None
	1.2.840.10008.5.1.4.1.1.5	JPEG 2000 Image Compression (Lossless Only)	1.2.840.10008.1.2.4.90	SCP	None
	1.2.840.10008.5.1.4.1.1.5	JPEG 2000 Image Compression	1.2.840.10008.1.2.4.991	SCP	None

Table 7: Acceptable Presentation Contexts for DICOM Server (continued)

Abstract Syntax		Transfer Syntax		Role	Ext. Neg.
Name	UID	Name	UID		
Basic Text SR Storage	1.2.840.10008.5.1.4.1.1.88.11	DICOM Implicit VR Little Endian	1.2.840.10008.1.2	SCP	None
	1.2.840.10008.5.1.4.1.1.88.11	DICOM Explicit VR Little Endian	1.2.840.10008.1.2.1	SCP	None
	1.2.840.10008.5.1.4.1.1.88.11	DICOM Explicit VR Big Endian	1.2.840.10008.1.2.2	SCP	None
	1.2.840.10008.5.1.4.1.1.88.11	JPEG Baseline (Process 1)	1.2.840.10008.1.2.4.50	SCP	None
	1.2.840.10008.5.1.4.1.1.88.11	JPEG Extended (Process 2 & 4)	1.2.840.10008.1.2.4.51	SCP	None
	1.2.840.10008.5.1.4.1.1.88.11	JPEG Lossless, Non-Hierarchical (Process 14)	1.2.840.10008.1.2.4.57	SCP	None
	1.2.840.10008.5.1.4.1.1.88.11	JPEG Lossless, Non-Hierarchical, First-Order Prediction (Process 14 [Selection Value 1])	1.2.840.10008.1.2.4.70	SCP	None
	1.2.840.10008.5.1.4.1.1.88.11	JPEG 2000 Image Compression (Lossless Only)	1.2.840.10008.1.2.4.90	SCP	None
	1.2.840.10008.5.1.4.1.1.88.11	JPEG 2000 Image Compression	1.2.840.10008.1.2.4.991	SCP	None

Table 7: Acceptable Presentation Contexts for DICOM Server (continued)

Abstract Syntax		Transfer Syntax		Role	Ext. Neg.
Name	UID	Name	UID		
Enhanced SR Storage	1.2.840.10008.5.1.4.1.1.88.22	DICOM Implicit VR Little Endian	1.2.840.10008.1.2	SCP	None
	1.2.840.10008.5.1.4.1.1.88.22	DICOM Explicit VR Little Endian	1.2.840.10008.1.2.1	SCP	None
	1.2.840.10008.5.1.4.1.1.88.22	DICOM Explicit VR Big Endian	1.2.840.10008.1.2.2	SCP	None
	1.2.840.10008.5.1.4.1.1.88.22	JPEG Baseline (Process 1)	1.2.840.10008.1.2.4.50	SCP	None
	1.2.840.10008.5.1.4.1.1.88.22	JPEG Extended (Process 2 & 4)	1.2.840.10008.1.2.4.51	SCP	None
	1.2.840.10008.5.1.4.1.1.88.22	JPEG Lossless, Non-Hierarchical (Process 14)	1.2.840.10008.1.2.4.57	SCP	None
	1.2.840.10008.5.1.4.1.1.88.22	JPEG Lossless, Non-Hierarchical, First-Order Prediction (Process 14 [Selection Value 1])	1.2.840.10008.1.2.4.70	SCP	None
	1.2.840.10008.5.1.4.1.1.88.11	JPEG 2000 Image Compression (Lossless Only)	1.2.840.10008.1.2.4.90	SCP	None
	1.2.840.10008.5.1.4.1.1.88.11	JPEG 2000 Image Compression	1.2.840.10008.1.2.4.991	SCP	None

Table 7: Acceptable Presentation Contexts for DICOM Server (continued)

Abstract Syntax		Transfer Syntax		Role	Ext. Neg.
Name	UID	Name	UID		
Comprehensive SR Storage	1.2.840.10008.5.1.4.1.1.88.33	DICOM Implicit VR Little Endian	1.2.840.10008.1.2	SCP	None
	1.2.840.10008.5.1.4.1.1.88.33	DICOM Explicit VR Little Endian	1.2.840.10008.1.2.1	SCP	None
	1.2.840.10008.5.1.4.1.1.88.33	DICOM Explicit VR Big Endian	1.2.840.10008.1.2.2	SCP	None
	1.2.840.10008.5.1.4.1.1.88.33	JPEG Baseline (Process 1)	1.2.840.10008.1.2.4.50	SCP	None
	1.2.840.10008.5.1.4.1.1.88.33	JPEG Extended (Process 2 & 4)	1.2.840.10008.1.2.4.51	SCP	None
	1.2.840.10008.5.1.4.1.1.88.33	JPEG Lossless, Non-Hierarchical (Process 14)	1.2.840.10008.1.2.4.57	SCP	None
	1.2.840.10008.5.1.4.1.1.88.33	JPEG Lossless, Non-Hierarchical, First-Order Prediction (Process 14 [Selection Value 1])	1.2.840.10008.1.2.4.70	SCP	None
	1.2.840.10008.5.1.4.1.1.88.33	JPEG 2000 Image Compression (Lossless Only)	1.2.840.10008.1.2.4.90	SCP	None
	1.2.840.10008.5.1.4.1.1.88.33	JPEG 2000 Image Compression	1.2.840.10008.1.2.4.991	SCP	None

Table 7: Acceptable Presentation Contexts for DICOM Server (continued)

Abstract Syntax		Transfer Syntax		Role	Ext. Neg.
Name	UID	Name	UID		
Stand-alone Overlay Storage	1.2.840.10008.5.1.4.1.1.8	DICOM Implicit VR Little Endian	1.2.840.10008.1.2	SCP	None
	1.2.840.10008.5.1.4.1.1.8	DICOM Explicit VR Little Endian	1.2.840.10008.1.2.1	SCP	None
	1.2.840.10008.5.1.4.1.1.8	DICOM Explicit VR Big Endian	1.2.840.10008.1.2.2	SCP	None
	1.2.840.10008.5.1.4.1.1.8	JPEG Baseline (Process 1)	1.2.840.10008.1.2.4.50	SCP	None
	1.2.840.10008.5.1.4.1.1.8	JPEG Extended (Process 2 & 4)	1.2.840.10008.1.2.4.51	SCP	None
	1.2.840.10008.5.1.4.1.1.8	JPEG Lossless, Non-Hierarchical (Process 14)	1.2.840.10008.1.2.4.57	SCP	None
	1.2.840.10008.5.1.4.1.1.8	JPEG Lossless, Non-Hierarchical, First-Order Prediction (Process 14 [Selection Value 1])	1.2.840.10008.1.2.4.70	SCP	None
	1.2.840.10008.5.1.4.1.1.8	JPEG 2000 Image Compression (Lossless Only)	1.2.840.10008.1.2.4.90	SCP	None
	1.2.840.10008.5.1.4.1.1.8	JPEG 2000 Image Compression	1.2.840.10008.1.2.4.991	SCP	None

Table 7: Acceptable Presentation Contexts for DICOM Server (continued)

Abstract Syntax		Transfer Syntax		Role	Ext. Neg.
Name	UID	Name	UID		
Stand-alone Curve Storage	1.2.840.10008.5.1.4.1.1.9	DICOM Implicit VR Little Endian	1.2.840.10008.1.2	SCP	None
	1.2.840.10008.5.1.4.1.1.9	DICOM Explicit VR Little Endian	1.2.840.10008.1.2.1	SCP	None
	1.2.840.10008.5.1.4.1.1.9	DICOM Explicit VR Big Endian	1.2.840.10008.1.2.2	SCP	None
	1.2.840.10008.5.1.4.1.1.9	JPEG Baseline (Process 1)	1.2.840.10008.1.2.4.50	SCP	None
	1.2.840.10008.5.1.4.1.1.9	JPEG Extended (Process 2 & 4)	1.2.840.10008.1.2.4.51	SCP	None
	1.2.840.10008.5.1.4.1.1.9	JPEG Lossless, Non-Hierarchical (Process 14)	1.2.840.10008.1.2.4.57	SCP	None
	1.2.840.10008.5.1.4.1.1.9	JPEG Lossless, Non-Hierarchical, First-Order Prediction (Process 14 [Selection Value 1])	1.2.840.10008.1.2.4.70	SCP	None
	1.2.840.10008.5.1.4.1.1.9	JPEG 2000 Image Compression (Lossless Only)	1.2.840.10008.1.2.4.90	SCP	None
	1.2.840.10008.5.1.4.1.1.9	JPEG 2000 Image Compression	1.2.840.10008.1.2.4.991	SCP	None

Table 7: Acceptable Presentation Contexts for DICOM Server (continued)

Abstract Syntax		Transfer Syntax		Role	Ext. Neg.
Name	UID	Name	UID		
Stand-alone Modality LUT Storage	1.2.840.10008.5.1.4.1.1.10	DICOM Implicit VR Little Endian	1.2.840.10008.1.2	SCP	None
	1.2.840.10008.5.1.4.1.1.10	DICOM Explicit VR Little Endian	1.2.840.10008.1.2.1	SCP	None
	1.2.840.10008.5.1.4.1.1.10	DICOM Explicit VR Big Endian	1.2.840.10008.1.2.2	SCP	None
	1.2.840.10008.5.1.4.1.1.10	JPEG Baseline (Process 1)	1.2.840.10008.1.2.4.50	SCP	None
	1.2.840.10008.5.1.4.1.1.10	JPEG Extended (Process 2 & 4)	1.2.840.10008.1.2.4.51	SCP	None
	1.2.840.10008.5.1.4.1.1.10	JPEG Lossless, Non-Hierarchical (Process 14)	1.2.840.10008.1.2.4.57	SCP	None
	1.2.840.10008.5.1.4.1.1.10	JPEG Lossless, Non-Hierarchical, First-Order Prediction (Process 14 [Selection Value 1])	1.2.840.10008.1.2.4.70	SCP	None
	1.2.840.10008.5.1.4.1.1.10	JPEG 2000 Image Compression (Lossless Only)	1.2.840.10008.1.2.4.90	SCP	None
	1.2.840.10008.5.1.4.1.1.10	JPEG 2000 Image Compression	1.2.840.10008.1.2.4.991	SCP	None

Table 7: Acceptable Presentation Contexts for DICOM Server (continued)

Abstract Syntax		Transfer Syntax		Role	Ext. Neg.
Name	UID	Name	UID		
Stand-alone VOI LUT Storage	1.2.840.10008.5.1.4.1.1.11	DICOM Implicit VR Little Endian	1.2.840.10008.1.2	SCP	None
	1.2.840.10008.5.1.4.1.1.11	DICOM Explicit VR Little Endian	1.2.840.10008.1.2.1	SCP	None
	1.2.840.10008.5.1.4.1.1.11	DICOM Explicit VR Big Endian	1.2.840.10008.1.2.2	SCP	None
	1.2.840.10008.5.1.4.1.1.11	JPEG Baseline (Process 1)	1.2.840.10008.1.2.4.50	SCP	None
	1.2.840.10008.5.1.4.1.1.11	JPEG Extended (Process 2 & 4)	1.2.840.10008.1.2.4.51	SCP	None
	1.2.840.10008.5.1.4.1.1.11	JPEG Lossless, Non-Hierarchical (Process 14)	1.2.840.10008.1.2.4.57	SCP	None
	1.2.840.10008.5.1.4.1.1.11	JPEG Lossless, Non-Hierarchical, First-Order Prediction (Process 14 [Selection Value 1])	1.2.840.10008.1.2.4.70	SCP	None
	1.2.840.10008.5.1.4.1.1.11	JPEG 2000 Image Compression (Lossless Only)	1.2.840.10008.1.2.4.90	SCP	None
	1.2.840.10008.5.1.4.1.1.11	JPEG 2000 Image Compression	1.2.840.10008.1.2.4.991	SCP	None

Table 7: Acceptable Presentation Contexts for DICOM Server (continued)

Abstract Syntax		Transfer Syntax		Role	Ext. Neg.
Name	UID	Name	UID		
12-lead ECG Waveform Storage	1.2.840.10008.5.4.1.1.9.1.1	DICOM Implicit VR Little Endian	1.2.840.10008.1.2	SCP	None
	1.2.840.10008.5.4.1.1.9.1.1	DICOM Explicit VR Little Endian	1.2.840.10008.1.2.1	SCP	None
	1.2.840.10008.5.4.1.1.9.1.1	DICOM Explicit VR Big Endian	1.2.840.10008.1.2.2	SCP	None
	1.2.840.10008.5.4.1.1.9.1.1	JPEG Baseline (Process 1)	1.2.840.10008.1.2.4.50	SCP	None
	1.2.840.10008.5.4.1.1.9.1.1	JPEG Extended (Process 2 & 4)	1.2.840.10008.1.2.4.51	SCP	None
	1.2.840.10008.5.4.1.1.9.1.1	JPEG Lossless, Non-Hierarchical (Process 14)	1.2.840.10008.1.2.4.57	SCP	None
	1.2.840.10008.5.4.1.1.9.1.1	JPEG Lossless, Non-Hierarchical, First-Order Prediction (Process 14 [Selection Value 1])	1.2.840.10008.1.2.4.70	SCP	None
	1.2.840.10008.5.4.1.1.9.1.1	JPEG 2000 Image Compression (Lossless Only)	1.2.840.10008.1.2.4.90	SCP	None
	1.2.840.10008.5.4.1.1.9.1.1	JPEG 2000 Image Compression	1.2.840.10008.1.2.4.991	SCP	None

Table 7: Acceptable Presentation Contexts for DICOM Server (continued)

Abstract Syntax		Transfer Syntax		Role	Ext. Neg.
Name	UID	Name	UID		
General ECG Waveform Storage	1.2.840.10008.5.4.1.1.9.1.2	DICOM Implicit VR Little Endian	1.2.840.10008.1.2	SCP	None
	1.2.840.10008.5.4.1.1.9.1.2	DICOM Explicit VR Little Endian	1.2.840.10008.1.2.1	SCP	None
	1.2.840.10008.5.4.1.1.9.1.2	DICOM Explicit VR Big Endian	1.2.840.10008.1.2.2	SCP	None
	1.2.840.10008.5.4.1.1.9.1.2	JPEG Baseline (Process 1)	1.2.840.10008.1.2.4.50	SCP	None
	1.2.840.10008.5.4.1.1.9.1.2	JPEG Extended (Process 2 & 4)	1.2.840.10008.1.2.4.51	SCP	None
	1.2.840.10008.5.4.1.1.9.1.2	JPEG Lossless, Non-Hierarchical (Process 14)	1.2.840.10008.1.2.4.57	SCP	None
	1.2.840.10008.5.4.1.1.9.1.2	JPEG Lossless, Non-Hierarchical, First-Order Prediction (Process 14 [Selection Value 1])	1.2.840.10008.1.2.4.70	SCP	None
	1.2.840.10008.5.4.1.1.9.1.2	JPEG 2000 Image Compression (Lossless Only)	1.2.840.10008.1.2.4.90	SCP	None
	1.2.840.10008.5.4.1.1.9.1.2	JPEG 2000 Image Compression	1.2.840.10008.1.2.4.991	SCP	None

Table 7: Acceptable Presentation Contexts for DICOM Server (continued)

Abstract Syntax		Transfer Syntax		Role	Ext. Neg.
Name	UID	Name	UID		
Ambulatory ECG Waveform Storage	1.2.840.10008.5.4.1.1.9.1.3	DICOM Implicit VR Little Endian	1.2.840.10008.1.2	SCP	None
	1.2.840.10008.5.4.1.1.9.1.3	DICOM Explicit VR Little Endian	1.2.840.10008.1.2.1	SCP	None
	1.2.840.10008.5.4.1.1.9.1.3	DICOM Explicit VR Big Endian	1.2.840.10008.1.2.2	SCP	None
	1.2.840.10008.5.4.1.1.9.1.3	JPEG Baseline (Process 1)	1.2.840.10008.1.2.4.50	SCP	None
	1.2.840.10008.5.4.1.1.9.1.3	JPEG Extended (Process 2 & 4)	1.2.840.10008.1.2.4.51	SCP	None
	1.2.840.10008.5.4.1.1.9.1.3	JPEG Lossless, Non-Hierarchical (Process 14)	1.2.840.10008.1.2.4.57	SCP	None
	1.2.840.10008.5.4.1.1.9.1.3	JPEG Lossless, Non-Hierarchical, First-Order Prediction (Process 14 [Selection Value 1])	1.2.840.10008.1.2.4.70	SCP	None
		JPEG 2000 Image Compression (Lossless Only)	1.2.840.10008.1.2.4.90	SCP	None
	1.2.840.10008.5.4.1.1.9.1.3	JPEG 2000 Image Compression	1.2.840.10008.1.2.4.991	SCP	None

Table 7: Acceptable Presentation Contexts for DICOM Server (continued)

Abstract Syntax		Transfer Syntax		Role	Ext. Neg.
Name	UID	Name	UID		
Hemodynamic Waveform Storage	1.2.840.10008.5.1.4.1.1.9.2.1	DICOM Implicit VR Little Endian	1.2.840.10008.1.2	SCP	None
	1.2.840.10008.5.1.4.1.1.9.2.1	DICOM Explicit VR Little Endian	1.2.840.10008.1.2.1	SCP	None
	1.2.840.10008.5.1.4.1.1.9.2.1	DICOM Explicit VR Big Endian	1.2.840.10008.1.2.2	SCP	None
	1.2.840.10008.5.1.4.1.1.9.2.1	JPEG Baseline (Process 1)	1.2.840.10008.1.2.4.50	SCP	None
	1.2.840.10008.5.1.4.1.1.9.2.1	JPEG Extended (Process 2 & 4)	1.2.840.10008.1.2.4.51	SCP	None
	1.2.840.10008.5.1.4.1.1.9.2.1	JPEG Lossless, Non-Hierarchical (Process 14)	1.2.840.10008.1.2.4.57	SCP	None
	1.2.840.10008.5.1.4.1.1.9.2.1	JPEG Lossless, Non-Hierarchical, First-Order Prediction (Process 14 [Selection Value 1])	1.2.840.10008.1.2.4.70	SCP	None
	1.2.840.10008.5.1.4.1.1.9.2.1	JPEG 2000 Image Compression (Lossless Only)	1.2.840.10008.1.2.4.90	SCP	None
	1.2.840.10008.5.1.4.1.1.9.2.1	JPEG 2000 Image Compression	1.2.840.10008.1.2.4.991	SCP	None

Table 7: Acceptable Presentation Contexts for DICOM Server (continued)

Abstract Syntax		Transfer Syntax		Role	Ext. Neg.
Name	UID	Name	UID		
Cardiac Electrophysiology Waveform Storage	1.2.840.10008.5.1.4.1.1.9.3.1	DICOM Implicit VR Little Endian	1.2.840.10008.1.2	SCP	None
	1.2.840.10008.5.1.4.1.1.9.3.1	DICOM Explicit VR Little Endian	1.2.840.10008.1.2.1	SCP	None
	1.2.840.10008.5.1.4.1.1.9.3.1	DICOM Explicit VR Big Endian	1.2.840.10008.1.2.2	SCP	None
	1.2.840.10008.5.1.4.1.1.9.3.1	JPEG Baseline (Process 1)	1.2.840.10008.1.2.4.50	SCP	None
	1.2.840.10008.5.1.4.1.1.9.3.1	JPEG Extended (Process 2 & 4)	1.2.840.10008.1.2.4.51	SCP	None
	1.2.840.10008.5.1.4.1.1.9.3.1	JPEG Lossless, Non-Hierarchical (Process 14)	1.2.840.10008.1.2.4.57	SCP	None
	1.2.840.10008.5.1.4.1.1.9.3.1	JPEG Lossless, Non-Hierarchical, First-Order Prediction (Process 14 [Selection Value 1])	1.2.840.10008.1.2.4.70	SCP	None
	1.2.840.10008.5.1.4.1.1.9.3.1	JPEG 2000 Image Compression (Lossless Only)	1.2.840.10008.1.2.4.90	SCP	None
	1.2.840.10008.5.1.4.1.1.9.3.1	JPEG 2000 Image Compression	1.2.840.10008.1.2.4.991	SCP	None

Table 7: Acceptable Presentation Contexts for DICOM Server (continued)

Abstract Syntax		Transfer Syntax		Role	Ext. Neg.
Name	UID	Name	UID		
Basic Voice Audio Waveform Storage	1.2.840.10008.5.4.1.1.9.4.1	DICOM Implicit VR Little Endian	1.2.840.10008.1.2	SCP	None
	1.2.840.10008.5.4.1.1.9.4.1	DICOM Explicit VR Little Endian	1.2.840.10008.1.2.1	SCP	None
	1.2.840.10008.5.4.1.1.9.4.1	DICOM Explicit VR Big Endian	1.2.840.10008.1.2.2	SCP	None
	1.2.840.10008.5.4.1.1.9.4.1	JPEG Baseline (Process 1)	1.2.840.10008.1.2.4.50	SCP	None
	1.2.840.10008.5.4.1.1.9.4.1	JPEG Extended (Process 2 & 4)	1.2.840.10008.1.2.4.51	SCP	None
	1.2.840.10008.5.4.1.1.9.4.1	JPEG Lossless, Non-Hierarchical (Process 14)	1.2.840.10008.1.2.4.57	SCP	None
	1.2.840.10008.5.4.1.1.9.4.1	JPEG Lossless, Non-Hierarchical, First-Order Prediction (Process 14 [Selection Value 1])	1.2.840.10008.1.2.4.70	SCP	None
	1.2.840.10008.5.4.1.1.9.4.1	JPEG 2000 Image Compression (Lossless Only)	1.2.840.10008.1.2.4.90	SCP	None
	1.2.840.10008.5.4.1.1.9.4.1	JPEG 2000 Image Compression	1.2.840.10008.1.2.4.991	SCP	None

Table 7: Acceptable Presentation Contexts for DICOM Server (continued)

Abstract Syntax		Transfer Syntax		Role	Ext. Neg.
Name	UID	Name	UID		
Multi-frame Single Bit Secondary Capture Image Storage	1.2.840.10008.5.1.4.1.1.7.1	DICOM Implicit VR Little Endian	1.2.840.10008.1.2	SCP	None
	1.2.840.10008.5.1.4.1.1.7.1	DICOM Explicit VR Little Endian	1.2.840.10008.1.2.1	SCP	None
	1.2.840.10008.5.1.4.1.1.7.1	DICOM Explicit VR Big Endian	1.2.840.10008.1.2.2	SCP	None
	1.2.840.10008.5.1.4.1.1.7.1	JPEG Baseline (Process 1)	1.2.840.10008.1.2.4.50	SCP	None
	1.2.840.10008.5.1.4.1.1.7.1	JPEG Extended (Process 2 & 4)	1.2.840.10008.1.2.4.51	SCP	None
	1.2.840.10008.5.1.4.1.1.7.1	JPEG Lossless, Non-Hierarchical (Process 14)	1.2.840.10008.1.2.4.57	SCP	None
	1.2.840.10008.5.1.4.1.1.7.1	JPEG Lossless, Non-Hierarchical, First-Order Prediction (Process 14 [Selection Value 1])	1.2.840.10008.1.2.4.70	SCP	None
	1.2.840.10008.5.1.4.1.1.7.1	JPEG 2000 Image Compression (Lossless Only)	1.2.840.10008.1.2.4.90	SCP	None
	1.2.840.10008.5.1.4.1.1.7.1	JPEG 2000 Image Compression	1.2.840.10008.1.2.4.991	SCP	None

Table 7: Acceptable Presentation Contexts for DICOM Server (continued)

Abstract Syntax		Transfer Syntax		Role	Ext. Neg.
Name	UID	Name	UID		
Multi-frame True Color Secondary Capture Image Storage	1.2.840.10008.5.1.4.1.1.7.4	DICOM Implicit VR Little Endian	1.2.840.10008.1.2	SCP	None
	1.2.840.10008.5.1.4.1.1.7.4	DICOM Explicit VR Little Endian	1.2.840.10008.1.2.1	SCP	None
	1.2.840.10008.5.1.4.1.1.7.4	DICOM Explicit VR Big Endian	1.2.840.10008.1.2.2	SCP	None
	1.2.840.10008.5.1.4.1.1.7.4	JPEG Baseline (Process 1)	1.2.840.10008.1.2.4.50	SCP	None
	1.2.840.10008.5.1.4.1.1.7.4	JPEG Extended (Process 2 & 4)	1.2.840.10008.1.2.4.51	SCP	None
	1.2.840.10008.5.1.4.1.1.7.4	JPEG Lossless, Non-Hierarchical (Process 14)	1.2.840.10008.1.2.4.57	SCP	None
	1.2.840.10008.5.1.4.1.1.7.4	JPEG Lossless, Non-Hierarchical, First-Order Prediction (Process 14 [Selection Value 1])	1.2.840.10008.1.2.4.70	SCP	None
	1.2.840.10008.5.1.4.1.1.7.4	JPEG 2000 Image Compression (Lossless Only)	1.2.840.10008.1.2.4.90	SCP	None
	1.2.840.10008.5.1.4.1.1.7.4	JPEG 2000 Image Compression	1.2.840.10008.1.2.4.991	SCP	None

Table 7: Acceptable Presentation Contexts for DICOM Server (continued)

Abstract Syntax		Transfer Syntax		Role	Ext. Neg.
Name	UID	Name	UID		
MR Spectroscopy Storage	1.2.840.10008.5.1.4.1.1.4.2	DICOM Implicit VR Little Endian	1.2.840.10008.1.2	SCP	None
	1.2.840.10008.5.1.4.1.1.4.2	DICOM Explicit VR Little Endian	1.2.840.10008.1.2.1	SCP	None
	1.2.840.10008.5.1.4.1.1.4.2	DICOM Explicit VR Big Endian	1.2.840.10008.1.2.2	SCP	None
	1.2.840.10008.5.1.4.1.1.4.2	JPEG Baseline (Process 1)	1.2.840.10008.1.2.4.50	SCP	None
	1.2.840.10008.5.1.4.1.1.4.2	JPEG Extended (Process 2 & 4)	1.2.840.10008.1.2.4.51	SCP	None
	1.2.840.10008.5.1.4.1.1.4.2	JPEG Lossless, Non-Hierarchical (Process 14)	1.2.840.10008.1.2.4.57	SCP	None
	1.2.840.10008.5.1.4.1.1.4.2	JPEG Lossless, Non-Hierarchical, First-Order Prediction (Process 14 [Selection Value 1])	1.2.840.10008.1.2.4.70	SCP	None
	1.2.840.10008.5.1.4.1.1.4.2	JPEG 2000 Image Compression (Lossless Only)	1.2.840.10008.1.2.4.90	SCP	None
	1.2.840.10008.5.1.4.1.1.4.2	JPEG 2000 Image Compression	1.2.840.10008.1.2.4.991	SCP	None

Table 7: Acceptable Presentation Contexts for DICOM Server (continued)

Abstract Syntax		Transfer Syntax		Role	Ext. Neg.
Name	UID	Name	UID		
Enhanced MR Image Storage	1.2.840.10008.5.1.4.1.1.4.1	DICOM Implicit VR Little Endian	1.2.840.10008.1.2	SCP	None
	1.2.840.10008.5.1.4.1.1.4.1	DICOM Explicit VR Little Endian	1.2.840.10008.1.2.1	SCP	None
	1.2.840.10008.5.1.4.1.1.4.1	DICOM Explicit VR Big Endian	1.2.840.10008.1.2.2	SCP	None
	1.2.840.10008.5.1.4.1.1.4.1	JPEG Baseline (Process 1)	1.2.840.10008.1.2.4.50	SCP	None
	1.2.840.10008.5.1.4.1.1.4.1	JPEG Extended (Process 2 & 4)	1.2.840.10008.1.2.4.51	SCP	None
	1.2.840.10008.5.1.4.1.1.4.1	JPEG Lossless, Non-Hierarchical (Process 14)	1.2.840.10008.1.2.4.57	SCP	None
	1.2.840.10008.5.1.4.1.1.4.1	JPEG Lossless, Non-Hierarchical, First-Order Prediction (Process 14 [Selection Value 1])	1.2.840.10008.1.2.4.70	SCP	None
	1.2.840.10008.5.1.4.1.1.4.1	JPEG 2000 Image Compression (Lossless Only)	1.2.840.10008.1.2.4.90	SCP	None
	1.2.840.10008.5.1.4.1.1.4.1	JPEG 2000 Image Compression	1.2.840.10008.1.2.4.991	SCP	None

Table 7: Acceptable Presentation Contexts for DICOM Server (continued)

Abstract Syntax		Transfer Syntax		Role	Ext. Neg.
Name	UID	Name	UID		
Raw Data Storage	1.2.840.10008.5.1.4.1.1.66	DICOM Implicit VR Little Endian	1.2.840.10008.1.2	SCP	None
	1.2.840.10008.5.1.4.1.1.66	DICOM Explicit VR Little Endian	1.2.840.10008.1.2.1	SCP	None
	1.2.840.10008.5.1.4.1.1.66	DICOM Explicit VR Big Endian	1.2.840.10008.1.2.2	SCP	None
	1.2.840.10008.5.1.4.1.1.66	JPEG Baseline (Process 1)	1.2.840.10008.1.2.4.50	SCP	None
	1.2.840.10008.5.1.4.1.1.66	JPEG Extended (Process 2 & 4)	1.2.840.10008.1.2.4.51	SCP	None
	1.2.840.10008.5.1.4.1.1.66	JPEG Lossless, Non-Hierarchical (Process 14)	1.2.840.10008.1.2.4.57	SCP	None
	1.2.840.10008.5.1.4.1.1.66	JPEG Lossless, Non-Hierarchical, First-Order Prediction (Process 14 [Selection Value 1])	1.2.840.10008.1.2.4.70	SCP	None
	1.2.840.10008.5.1.4.1.1.66	JPEG 2000 Image Compression (Lossless Only)	1.2.840.10008.1.2.4.90	SCP	None
	1.2.840.10008.5.1.4.1.1.66	JPEG 2000 Image Compression	1.2.840.10008.1.2.4.991	SCP	None

Table 7: Acceptable Presentation Contexts for DICOM Server (continued)

Abstract Syntax		Transfer Syntax		Role	Ext. Neg.
Name	UID	Name	UID		
Presentation LUT	1.2.840.10008.5.1.1.23	DICOM Implicit VR Little Endian	1.2.840.10008.1.2	SCP	None
	1.2.840.10008.5.1.1.23	DICOM Explicit VR Little Endian	1.2.840.10008.1.2.1	SCP	None
	1.2.840.10008.5.1.1.23	DICOM Explicit VR Big Endian	1.2.840.10008.1.2.2	SCP	None
	1.2.840.10008.5.1.1.23	JPEG Baseline (Process 1)	1.2.840.10008.1.2.4.50	SCP	None
	1.2.840.10008.5.1.1.23	JPEG Extended (Process 2 & 4)	1.2.840.10008.1.2.4.51	SCP	None
	1.2.840.10008.5.1.1.23	JPEG Lossless, Non-Hierarchical (Process 14)	1.2.840.10008.1.2.4.57	SCP	None
	1.2.840.10008.5.1.1.23	JPEG Lossless, Non-Hierarchical, First-Order Prediction (Process 14 [Selection Value 1])	1.2.840.10008.1.2.4.70	SCP	None
	1.2.840.10008.5.1.1.23	JPEG 2000 Image Compression (Lossless Only)	1.2.840.10008.1.2.4.90	SCP	None
	1.2.840.10008.5.1.1.23	JPEG 2000 Image Compression	1.2.840.10008.1.2.4.991	SCP	None

Table 7: Acceptable Presentation Contexts for DICOM Server (continued)

Abstract Syntax		Transfer Syntax		Role	Ext. Neg.
Name	UID	Name	UID		
Mammography CAD SR	1.2.840.10008.5.1.4.1.1.88.50	DICOM Implicit VR Little Endian	1.2.840.10008.1.2	SCP	None
	1.2.840.10008.5.1.4.1.1.88.50	DICOM Explicit VR Little Endian	1.2.840.10008.1.2.1	SCP	None
	1.2.840.10008.5.1.4.1.1.88.50	DICOM Explicit VR Big Endian	1.2.840.10008.1.2.2	SCP	None
	1.2.840.10008.5.1.4.1.1.88.50	JPEG Baseline (Process 1)	1.2.840.10008.1.2.4.50	SCP	None
	1.2.840.10008.5.1.4.1.1.88.50	JPEG Extended (Process 2 & 4)	1.2.840.10008.1.2.4.51	SCP	None
	1.2.840.10008.5.1.4.1.1.88.50	JPEG Lossless, Non-Hierarchical (Process 14)	1.2.840.10008.1.2.4.57	SCP	None
	1.2.840.10008.5.1.4.1.1.88.50	JPEG Lossless, Non-Hierarchical, First-Order Prediction (Process 14 [Selection Value 1])	1.2.840.10008.1.2.4.70	SCP	None
	1.2.840.10008.5.1.4.1.1.88.50	JPEG 2000 Image Compression (Lossless Only)	1.2.840.10008.1.2.4.90	SCP	None
	1.2.840.10008.5.1.4.1.1.88.50	JPEG 2000 Image Compression	1.2.840.10008.1.2.4.991	SCP	None

Table 7: Acceptable Presentation Contexts for DICOM Server (continued)

Abstract Syntax		Transfer Syntax		Role	Ext. Neg.
Name	UID	Name	UID		
Chest CAD SR	1.2.840.10008.5.1.4.1.1.88.65	DICOM Implicit VR Little Endian	1.2.840.10008.1.2	SCP	None
	1.2.840.10008.5.1.4.1.1.88.65	DICOM Explicit VR Little Endian	1.2.840.10008.1.2.1	SCP	None
	1.2.840.10008.5.1.4.1.1.88.65	DICOM Explicit VR Big Endian	1.2.840.10008.1.2.2	SCP	None
	1.2.840.10008.5.1.4.1.1.88.65	JPEG Baseline (Process 1)	1.2.840.10008.1.2.4.50	SCP	None
	1.2.840.10008.5.1.4.1.1.88.65	JPEG Extended (Process 2 & 4)	1.2.840.10008.1.2.4.51	SCP	None
	1.2.840.10008.5.1.4.1.1.88.65	JPEG Lossless, Non-Hierarchical (Process 14)	1.2.840.10008.1.2.4.57	SCP	None
	1.2.840.10008.5.1.4.1.1.88.65	JPEG Lossless, Non-Hierarchical, First-Order Prediction (Process 14 [Selection Value 1])	1.2.840.10008.1.2.4.70	SCP	None
	1.2.840.10008.5.1.4.1.1.88.65	JPEG 2000 Image Compression (Lossless Only)	1.2.840.10008.1.2.4.90	SCP	None
	1.2.840.10008.5.1.4.1.1.88.65	JPEG 2000 Image Compression	1.2.840.10008.1.2.4.991	SCP	None

Table 7: Acceptable Presentation Contexts for DICOM Server (continued)

Abstract Syntax		Transfer Syntax		Role	Ext. Neg.
Name	UID	Name	UID		
Grayscale Softcopy Presentation State	1.2.840.1008.5.1.4.1.1.11.1	DICOM Implicit VR Little Endian	1.2.840.10008.1.2	SCP	None
	1.2.840.1008.5.1.4.1.1.11.1	DICOM Explicit VR Little Endian	1.2.840.10008.1.2.1	SCP	None
	1.2.840.1008.5.1.4.1.1.11.1	DICOM Explicit VR Big Endian	1.2.840.10008.1.2.2	SCP	None
	1.2.840.1008.5.1.4.1.1.11.1	JPEG Baseline (Process 1)	1.2.840.10008.1.2.4.50	SCP	None
	1.2.840.1008.5.1.4.1.1.11.1	JPEG Extended (Process 2 & 4)	1.2.840.10008.1.2.4.51	SCP	None
	1.2.840.1008.5.1.4.1.1.11.1	JPEG Lossless, Non-Hierarchical (Process 14)	1.2.840.10008.1.2.4.57	SCP	None
	1.2.840.1008.5.1.4.1.1.11.1	JPEG Lossless, Non-Hierarchical, First-Order Prediction (Process 14 [Selection Value 1])	1.2.840.10008.1.2.4.70	SCP	None
	1.2.840.1008.5.1.4.1.1.11.1	JPEG 2000 Image Compression (Lossless Only)	1.2.840.10008.1.2.4.90	SCP	None
	1.2.840.1008.5.1.4.1.1.11.1	JPEG 2000 Image Compression	1.2.840.10008.1.2.4.991	SCP	None

3.1.3.2.4 Transfer Syntax Selection Policies

The DICOM Server prefers an explicit Transfer Syntax encoding. If offered a choice of Transfer Syntax in a Presentation Context, it will apply the following priorities to the choice of Transfer Syntax:

- DICOM Explicit VR Big Endian
- DICOM Explicit VR Little Endian
- DICOM Implicit VR Little Endian (Default)

If configured to accept JPEG Transfer Syntax (1.2.840.10008.1.2.4.50, 1.2.840.10008.1.2.4.51, 1.2.840.10008.1.2.4.57, 1.2.840.10008.1.2.4.70) then it will apply the following priorities to the choice of Transfer Syntax:

JPEG Lossless configuration:

- JPEG Lossless, Non-Hierarchical (Process 14)
- JPEG Lossless, Non-Hierarchical, First-Order Prediction (Process 14 [Selection Value 1])
- DICOM Explicit VR Little Endian
- DICOM Explicit VR Big Endian
- DICOM Implicit VR Little Endian (Default)

JPEG Lossy configuration:

- JPEG Baseline (Process 1)
- JPEG Extended (Process 2 & 4)
- DICOM Explicit VR Little Endian
- DICOM Explicit VR Big Endian
- DICOM Implicit VR Little Endian (Default)

3.1.3.3 Remote System Requests Objects Transfer

A Remote System requests objects (image, KIN) transfer from the DICOM Server using the C-MOVE command.

3.1.3.3.1 Associated Real World Activity

The Real World activity associated with the C-MOVE command is retrieval of images from the disk and storage of the images to a Remote System using a C-STORE command.

The DICOM Server will issue a failure status if it is unable to process the transfer request.

3.1.3.3.2 Presentation Context Table

Any of the Presentation Contexts shown in [Table 8](#) is acceptable to the DICOM Server:

Table 8: Acceptable Presentation Contexts for the DICOM Server

Abstract Syntax		Transfer Syntax		Role	Ext. Neg.
Name	UID	Name	UID		
Patient Root MOVE	1.2.840.10008.5.1.4.1.2.1.2	DICOM Implicit VR Little Endian	1.2.840.10008.1.2	SCP	None
	1.2.840.10008.5.1.4.1.2.1.2	DICOM Explicit VR Little Endian	1.2.840.10008.1.2.1	SCP	None
	1.2.840.10008.5.1.4.1.2.1.2	DICOM Explicit VR Big Endian	1.2.840.10008.1.2.2	SCP	None
Study Root MOVE	1.2.840.10008.5.1.4.1.2.2.2	DICOM Implicit VR Little Endian	1.2.840.10008.1.2	SCP	None
	1.2.840.10008.5.1.4.1.2.2.2	DICOM Explicit VR Little Endian	1.2.840.10008.1.2.1	SCP	None
	1.2.840.10008.5.1.4.1.2.2.2	DICOM Explicit VR Big Endian	1.2.840.10008.1.2.2	SCP	None

3.1.3.3.2.1 SOP Specific Conformance to Patient Root MOVE

The DICOM Server provides standard conformance to the DICOM V3.0 Query/Retrieve Service Class as an SCP for the following SOP Class: Patient Root Query/Retrieve Information Model - MOVE, UID=1.2.840.10008.5.1.4.1.2.1.2.

3.1.3.3.2.2 SOP Specific Conformance to Study Root MOVE

The DICOM Server provides standard conformance to the DICOM V3.0 Query/Retrieve Service Class as an SCP for the following SOP Class: Study Root Query/Retrieve Information Model - MOVE, UID=1.2.840.10008.5.1.4.1.2.2.2.

Prioritizing of C-MOVE requests is not supported.

The DICOM Server does not support relational C-MOVE requests.

All images requested in the C-MOVE will be sent over a single association (the association will not be established and torn down for each image).

If the DICOM Server returns one of the following status codes, it means that the C-MOVE has been unsuccessful.

Service Status	Further Meaning	Status Codes	Reason
Refused	Refusal status	A801	Move destination unknown
Refused	General failure status	A700	—
Warning	General warning status	B000	Sub operations complete - One or more failures
Failure	Failure status	C003	Single image retrieval failed
Failure	General failure status	C000	—

3.1.3.3.3 Presentation Context Acceptance Criterion

The DICOM Server will accept any Presentation Context from [Table 8](#).

3.1.3.3.4 Transfer Syntax Selection Policies

The DICOM Server prefers an explicit Transfer Syntax encoding. If offered a choice of Transfer Syntax in a Presentation Context, it will apply the following priorities to the choice of Transfer Syntax:

- DICOM Explicit VR Big Endian
- DICOM Explicit VR Little Endian
- DICOM Implicit VR Little Endian (Default)

3.1.3.4 Remote System Initiates Query Request

A Remote System initiates a query request using the C-FIND command.

3.1.3.4.1 Associated Real World Activity

The Real World activity associated with the C-FIND command is an examination of the archive content. The DICOM Server will issue a failure status if it is unable to process the query request.

3.1.3.4.2 Presentation Context Table

Any of the Presentation Contexts shown in [Table 9](#) is acceptable to the DICOM Server:

Table 9: Acceptable Presentation Contexts for the DICOM Server

Abstract Syntax		Transfer Syntax		Role	Ext. Neg.
Name	UID	Name	UID		
Patient Root FIND	1.2.840.10008.5.1.4.1.2.1.1	DICOM Implicit VR Little Endian	1.2.840.10008.1.2	SCP	None
	1.2.840.10008.5.1.4.1.2.1.1	DICOM Explicit VR Little Endian	1.2.840.10008.1.2.1	SCP	None
	1.2.840.10008.5.1.4.1.2.1.1	DICOM Explicit VR Big Endian	1.2.840.10008.1.2.2	SCP	None
Study Root FIND	1.2.840.10008.5.1.4.1.2.2.1	DICOM Implicit VR Little Endian	1.2.840.10008.1.2	SCP	None
	1.2.840.10008.5.1.4.1.2.2.1	DICOM Explicit VR Little Endian	1.2.840.10008.1.2.1	SCP	None
	1.2.840.10008.5.1.4.1.2.2.1	DICOM Explicit VR Big Endian	1.2.840.10008.1.2.2	SCP	None

3.1.3.4.2.1 SOP Specific Conformance to Patient Root FIND

The DICOM Server provides standard conformance to the DICOM V3.0 Query/Retrieve Service Class as an SCP for the following SOP Class: Patient Root Query/Retrieve Information Model - FIND.

UID=1.2.840.10008.5.1.4.1.2.1.1.

3.1.3.4.2.2 SOP Specific Conformance to Study Root FIND

The DICOM Server provides standard conformance to the DICOM V3.0 Query/Retrieve Service Class as an SCP for the following SOP Class: Study Root Query/Retrieve Information Model - FIND,

UID=1.2.840.10008.5.1.4.1.2.2.1.

The DICOM Server does not support Relational Search.

All Required (R) and Unique (U) Patient, Study, Series and Image level keys for Patient Root and Study Root Query/Retrieve Information Models are supported. The DICOM Server supports the following optional keys:

Patient Data

- Patient Birth Date (0010, 0030)
- Patient Sex (0010, 0040)
- Number of Patient Related Studies (0020, 1200)
- Number of Patient Related Series (0020, 1202)
- Number of Patient Related Images (0020, 1204)

Study Data

- Referring Physician's Name (0008, 0090)
- Number of Study Related Series (0020, 1206)
- Number of Study Related Images (0020, 1208)

Series Data

- Series Date (0008,0021)
- Series Time (0008,0031)
- Number of Series Related Images (0020, 1209)

Image Data

- Frame Of Reference UID (0020,0052)
- SOP Class UID (0008,0016)
- Image Date (0008,0023)
- Image Time (0008,0033)
- Image Type (0008,0008)
- Slice Location (0020,1041)
- Rows (0028,0010)
- Columns (0028,0011)
- Contrast Bolus Agent (0018,0010)
- Scan Options (0018,0022)
- Instance Creation Date (0008, 0012)
- Instance Creation Time (0008, 0013)

- Creation Date (2100, 0040)
- Creation Time (2100, 0050)
- Bits Allocated (0028, 0100)
- Samples Per Pixel (0028, 0002)
- Number of Frames (0028, 0008)
- Sequence Name (0018, 0024)
- Trigger Time (0018, 1060)
- Echo Number (0018, 0086)
- Echo Time (0018, 0081)
- Echo Train Length (0018, 0091)
- Inversion Time (0018, 0082)
- Scanning Sequence (0018, 0020)
- Sequence Variant (0018, 0021)
- MR Acquisition type (0018, 0023)
- Repetition Time (0018, 0080)

Table 10: Support of Key Image Notes Keys

Attribute Name	Tag	Query Keys Matching	Query Keys Returned
Content Date	(0008,0023)	-	+
Content Time	(0008,0033)	-	+
Observation Date Time	(0040,A032)	-	+
Referenced Request Sequence	(0040,A370)	-	+
>Study Instance UID	(0020,000D)	-	+
>Accession Number	(0008,0050)	-	+
>Requested Procedure ID	(0040,1000)	-	+
>Requested Procedure Code	(0032,1064)	-	+
Sequence			
>>Code Value	(0008,0100)	-	+
>>Coding Scheme Designator	(0008,0102)	-	+
>>Coding Scheme Version	(0008,0103)	-	+
>>Code Meaning	(0008,0104)	-	+
Concept Name Code Sequence	(0040,A043)	+	+
>Code Value	(0008,0100)	+	+
>Coding Scheme Designator	(0008,0102)	+	+
>Coding Scheme Version	(0008,0103)	-	+
>Code Meaning	(0008,0104)	-	+

Unsupported fields will not be returned in the C-FIND response.

C-FIND-CANCEL is supported. However, some C-FIND responses may be forwarded before the C-FIND-CANCEL takes effect.

If the DICOM Server returns one of the following status codes, it means that the C-FIND has been unsuccessful:

Service Status	Further Meaning	Status Codes	Reason
Refused	Refusal status	A700	—
Warning	General warning status	B000	—
Failure	General failure status	C000	—

3.1.3.4.3 Presentation Context Acceptance Criterion

DICOM Server will accept any Presentation Context from [Table 9](#).

3.1.3.4.4 Transfer Syntax Selection Policies

The DICOM Server prefers an explicit Transfer Syntax encoding. If offered a choice of Transfer Syntax in a Presentation Context, it will apply the following priorities to the choice of Transfer Syntax:

- DICOM Explicit VR Big Endian
- DICOM Explicit VR Little Endian
- DICOM Implicit VR Little Endian (Default)

3.1.3.5 Remote System - MPPS Management

The Performed Procedure Step Manager supports forwarding messages to two different destinations. It starts issuing messages to the configured destinations immediately after it accepts the corresponding messages from the acquisition modality.

- An acquisition modality informs the Performed Procedure Step Manager that a particular Performed Procedure Step has started through the MPPS-N-CREATE service.
- An acquisition modality informs the Performed Procedure Step Manager that a particular Performed Procedure Step is completed through the MPPS-N-SET service.

3.1.3.5.1 Associated Real World Activity

The Real World activity associated with the MPPS-N-CREATE and MPPS-N-SET commands is triggered by the acquisition modality. MPPS Manager will forward the MPPS information to the Order Filler/System Scheduler and optionally to the report manager.

3.1.3.5.2 MPPS Manager Behavior

MPPS Manager receives MPPS-N-CREATE and MPPS-N-SET and acts as SCU to send them to the Order Filler/System Scheduler.

If MPPS Manager returns one of the following status codes, it means that the service request has been unsuccessful.

Service Status	Further Meaning	Status Codes	Reason
Refused	General refusal status	A700	—
Warning	General warning status	B000	—
Failure	General failure status	C000	—

3.1.3.5.3 PPS Exception Management

Not supported.

3.1.3.5.4 Presentation Context Table

Any of the Presentation Contexts shown in [Table 11](#) is acceptable to the MPPS Manager:

Table 11: Acceptable Presentation Contexts for MPPS Manager

Abstract Syntax		Transfer Syntax		Role	Ext. Neg.
Name	UID	Name	UID		
General Purpose Performed Procedure Step	1.2.840.10008.5.1.4.32.3	DICOM Implicit VR Little Endian	1.2.840.10008.1.2	SCP/ SCU	None
	1.2.840.10008.5.1.4.32.3	DICOM Explicit VR Little Endian	1.2.840.10008.1.2.1		
	1.2.840.10008.5.1.4.32.3	DICOM Explicit VR Big Endian	1.2.840.10008.1.2.2		

3.1.3.5.5 Transfer Syntax Selection Policies

MPPS Manager prefers an explicit Transfer Syntax encoding. If offered a choice of Transfer Syntax in a Presentation Context, it will apply the following priorities to the choice of Transfer Syntax:

- DICOM Explicit VR Big Endian
- DICOM Explicit VR Little Endian
- DICOM Implicit VR Little Endian (Default)

3.1.3.6 Remote System - Storage Commitment

An acquisition modality makes requests for storage commitment to the Image Manager for the images, Presentation States and Key Image Notes previously transmitted.

3.1.3.6.1 Associated Real World Activity

The Real World activity associated with the Storage Commitment service a modality request for storage commitment to the Image Manager for the images, Presentation States and Key Image Notes previously transmitted.

3.1.3.6.2 DICOM Server Behavior

The DICOM Server receives Storage Commitment request through N-ACTION command, verifies that the stored object resides on the archive and responds with Storage Commitment N-EVENT-REPORT to the acquisition modality.

3.1.3.6.3 DICOM Server Error handler

Under normal circumstances, in the event that the DICOM Server cannot service the storage commitment request, it shall respond with following status codes.

Event Type Name	Event Type ID	Attribute Name	Tag	Value	Reason
Storage Commitment request Complete - Failures Exist	2	Failure Reason	(0008,1197)	0112H	One or more of the elements in the Referenced SOP Instance Sequence was not available.

3.1.3.6.4 Presentation Context Table

Any of the Presentation Contexts shown in [Table 12](#) is acceptable to the DICOM Server.

Table 12: Acceptable Presentation Contexts for the DICOM Server

Abstract Syntax		Transfer Syntax		Role	Ext. Neg.
Name	UID	Name	UID		
Storage Commitment Push Model	1.2.840.10008.1.20.1	DICOM Implicit VR Little Endian	1.2.840.10008.1.2	SCP	None
	1.2.840.10008.1.20.1	DICOM Explicit VR Little Endian	1.2.840.10008.1.2.1		
	1.2.840.10008.1.20.1	DICOM Explicit VR Big Endian	1.2.840.10008.1.2.2		

3.1.3.6.5 Transfer Syntax Selection Policies

The DICOM Server prefers an explicit Transfer Syntax encoding. If offered a choice of Transfer Syntax in a Presentation Context, it will apply the following priorities to the choice of Transfer Syntax:

- DICOM Explicit VR Big Endian
- DICOM Explicit VR Little Endian
- DICOM Implicit VR Little Endian (Default)

4 Communication Profiles

4.1 Supported Communications Stacks (Parts 8, 9)

WFM provides DICOM 3.0 TCP/IP Network Communication Support as defined in Part 8 of the DICOM Standard.

4.2 TCP/IP Stack

All the Application Entities in WFM inherit their TCP/IP stack from the UNIX system upon which they operate.

4.2.1 Physical Media Support

WFM is indifferent to the physical medium over which TCP/IP operates.

4.2.2 Security Profiles

WFM supports the TLS 1.0 security profile.

5 Extensions, Specialization, Privatization of SOP Classes, and Transfer Syntax

5.1 Applicability of DICOM Structured Report SOP Classes

Table 13 specifies the way the system handles DICOM Structured Report SOP Classes.

Table 13: DICOM Structured Report SOP Class Handling

SOP Class Name	System SOP Class Applicability
Basic Text SR	Storage only (C-Store, C-Move, C-Find).
Enhanced SR	Storage only (C-Store, C-Move, C-Find).
Comprehensive SR	<ul style="list-style-type: none">■ The system workstation (PACS Client) generates E-Reports as objects of this SOP Class. Those object may contain:<ul style="list-style-type: none">- The standard radiology report (typically received from the RIS through HL7 interface) formatted using the TID-300 DICOM standard template. In case this is the only content the Basic Text SR SOP Class is used.- The Calcium Scoring report generated by the PACS Client formatted using "TID 3905 Calcium Scoring template" within "TID 3900 CT/MR Cardiovascular Analysis Report".- The Vessel Analysis report generated by the PACS Client formatted using "TID 3906 Vascular Section Measurements" within "TID 3900 CT/MR Cardiovascular Analysis Report".■ Comprehensive SR objects generated by other systems are not displayed by the system. For those, the system supports storage only (C-Store, C-Move, C-Find).
Mammography CAD SR	The system supports both storage (C-Store, C-Move, C-Find) and display (DX only).
Chest CAD SR	Storage only (C-Store, C-Move, C-Find).

5.2 Configuration

5.3 AE Title/Presentation Address Mapping

This mapping is defined during the WFM installation procedure.

5.4 Configurable Parameters

- Time-out
- DICOM port number
- Application Entity title

6 Support of Extended Character Sets

Support Code Extension Techniques. The following character sets are supported:

Table 14: Supported Single-Byte Character Sets without Code Extensions

Character Set Description	Defined Term	ISO Registration Number	Character Set
Default repertoire	None	ISO_IR 6	ISO 646
Latin alphabet No. 1	ISO_IR 100	ISO_IR 100	Supplementary set of ISO 8859
		ISO_IR 6	ISO 646
Arabic	ISO_IR 127	ISO_IR 127	Supplementary set of ISO 8859
		ISO_IR 6	ISO 646
Hebrew	ISO_IR 138	ISO_IR 138	Supplementary set of ISO 8859
		ISO_IR 6	ISO 646
Japanese	ISO_IR 13	ISO_IR 13	JIS X 0201: Katakana
		ISO_IR 14	JIS X 0201: Romaji
Thai	ISO_IR 166	ISO_IR 166	TIS 620-2533 (1990)
		ISO_IR 6	ISO 646

Table 15: Supported Single-Byte Character Sets with Code Extensions

Character Set Description	Defined Term	Standard for Code Extensions	ISO Registration Number	Character Set
Default repertoire	ISO 2022 IR 6	ISO 2022	ISO_IR 6	ISO 646
Latin alphabet No. 1	ISO 2022 IR 100	ISO 2022	ISO_IR 100	Supplementary set of ISO 8859
		ISO 2022	ISO_IR 6	ISO 646
Arabic	ISO 2022 IR 127	ISO 2022	ISO_IR 127	Supplementary set of ISO 8859
		ISO 2022	ISO_IR 6	ISO 646
Hebrew	ISO 2022 IR 138	ISO 2022	ISO_IR 138	Supplementary set of ISO 8859
		ISO 2022	ISO_IR 6	ISO 646
Japanese	ISO 2022 IR 13	ISO 2022	ISO_IR 13	JIS X 0201: Katakana
		ISO 2022	ISO_IR 14	JIS X 0201: Romaji
Thai	ISO 2022 IR 166	ISO 2022	ISO_IR 166	TIS 620-2533 (1990)
		ISO 2022	ISO_IR 6	ISO 646

Table 16: Supported Multi-Byte Character Sets without Code Extensions

Character Set Description	Defined Term
Unicode in UTF-8	ISO_IR 192
GB18030	GB18030

Table 17: Supported Multi-Byte Character Sets with Code Extensions

Character Set Description	Defined Term	Standard for Code Extensions	ISO Registration Number	Character Set
Japanese	ISO 2022 IR 87	ISO 2022	ISO_IR 87	JIS X 0208: Kanji
	ISO 2022 IR 159	ISO 2022	ISO_IR 159	JIS X 0212: Supplementary Kanji set
Korean	ISO 2022 IR 149	ISO 2022	ISO_IR 149	KS X 1001: Hangul and Hanja

CARESTREAM is a trademark of Carestream Health.
KODAK is a trademark of Kodak used under license.

Publication # 7H6012
© Carestream Health, Inc. 2007
150 Verona St.
Rochester, NY 14608
USA

