

Context. Accessibility. Relevance.

CLINICAL DATA WORKFLOW FOR
MEANINGFUL COLLABORATION.



The power of together.

Connect. Collaborate. Care.

Give physicians and administrators the clinical support they need to improve quality and reduce costs. Encourage patients to take more control over their care. Simplify clinical reporting to payers for more efficient reimbursement. Securely provide the right clinical images and data to the right people at the right time. Promote true collaboration using clinical data embedded seamlessly in your existing EMR ecosystem, bringing stakeholders together in their shared mission to deliver more effective care.



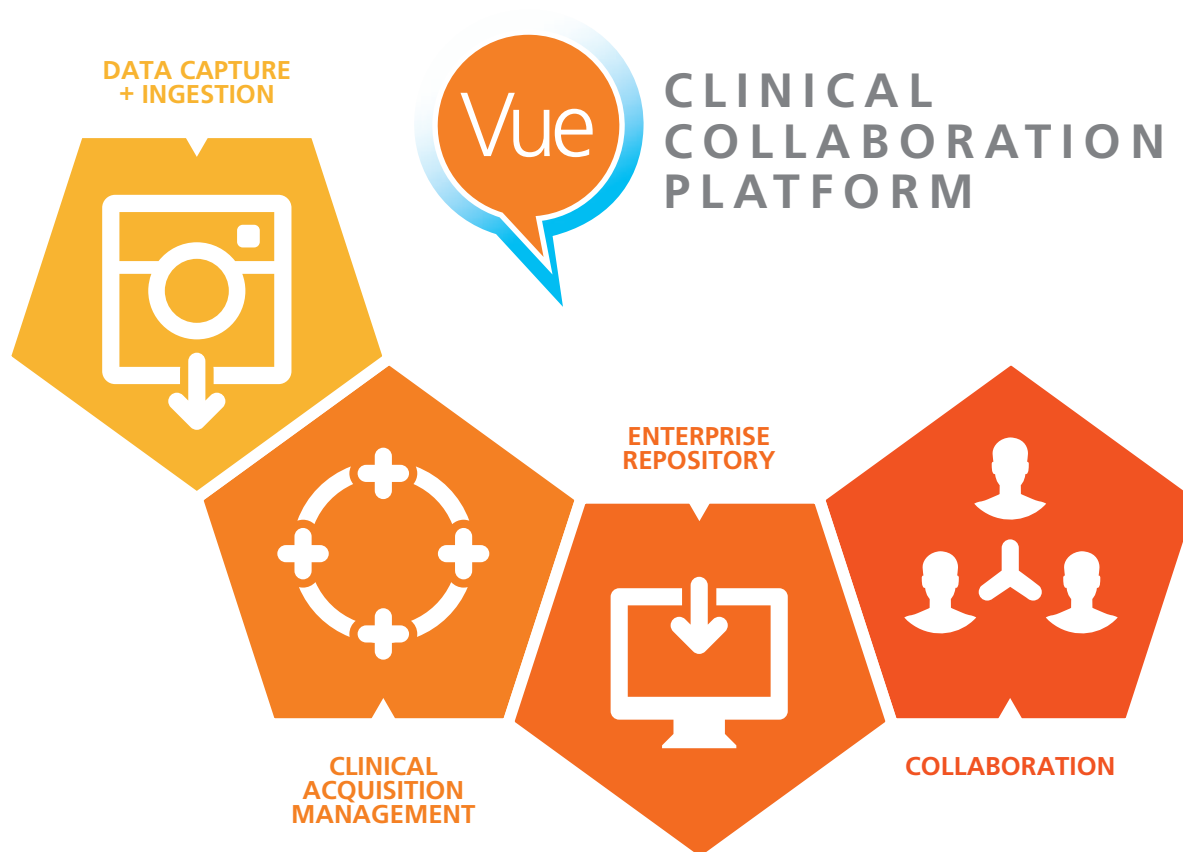
Carestream's Clinical Collaboration Platform gives all those who provide, manage, receive and reimburse care the ability to access the clinical images they need – using the preferred platform and screen for each workflow and setting. Through full integration with the enterprise's electronic medical or health record, meaningful clinical data within its appropriate context is always available for delivery to key stakeholders.

Across departments and information technologies. Between networks and sites. Among payers and providers. Around each episode of care and each patient's clinical history.

Carestream does more than integrate data and systems. We eliminate knowledge gaps and disjointed workflows. We enable transparency. And we help your teams collaborate around a shared goal: putting patients at the center of efficient, effective healthcare.

The power of together.





Connecting Physicians, Patients, Payers and Administrators.

Carestream's Clinical Collaboration Platform establishes an interoperable, standards-based clinical data ecosystem – connecting people with the clinical imaging data they need, across the continuum of care.

The process begins with **data capture and ingestion**. The Clinical Collaboration Platform works with or without departmental PACS, and with DICOM and non-DICOM interfaces accepting data in JPG, MOV, MP4, PDF, CCD and ECG formats. It interoperates within your current ecosystem using standards-based protocols such as IHE, HL7, DICOM, FHIR and web services, so you can easily create a patient-centered record without disrupting departmental workflows.

A simple web portal provides **clinical acquisition management** anytime, anywhere. Browser-based interaction accommodates the information flow, quality control and tagging needs of each department while maintaining departmental autonomy. The Clinical Collaboration Platform indexes raw metadata into structured, meaningful clinical content for effective management, using MPI, PIX or XDS registries to ensure data integrity.

Clinically meaningful data is stored in the **enterprise repository**. Intelligent information lifecycle management enables storage and access not just for each patient encounter, but for the cycles of care that make up each patient's complete clinical history. Tiered storage and backups optimize performance according to the value of clinical data.

An intuitive, zero-footprint web interface supports effective **collaboration** around clinical data, with viewing, reporting and distribution tools tailored to each user's needs. The Clinical Collaboration Platform isn't just for clinicians, administrators and IT managers. It also provides a portal for patients to encourage greater participation and responsibility for their own healthcare. And it helps simplify management and reduce costs by enabling more efficient reporting to payers.

Supporting Healthcare and Business Needs.

Every enterprise and every department has invested in technology infrastructure to enhance patient care. Carestream's Clinical Collaboration Platform provides a scalable, modular architecture that integrates with existing systems to deliver clinical data and tools across the enterprise – from clinical data reporting, to enterprise-wide data ingestion and archiving, to full patient and clinical data management.

Full Platform



Departmental PACS + Distribution



Departmental Workflow



Vendor Neutral Archiving (VNA)



EMR Enabled Access



Implement the Clinical Collaboration Platform end-to-end, or choose individual modules to complement your existing systems.

Create a view of clinical data to support each network, location, technology, workflow and provider in the shared goal of delivering more efficient, effective care.

- « **Primary Care**
- « **Radiology**
- « **Cardiology**
- « **Endoscopy**
- « **Dermatology**
- « **Laboratory**
- « **Emergency**
- « **Telemedicine**
- « **And more**

Building Smarter, More Productive Relationships.

The Clinical Collaboration Platform includes Carestream Vue modules that provide intelligent ingestion, archiving and management of clinical data, with zero-footprint access to support every department's workflow needs. Vue also includes intuitive portals for patients to access their own clinical data, and for payers to analyze data for accurate reimbursement.

Carestream brings targeted and timely clinical imaging data to everyone involved in the circle of care – reducing costs, eliminating inefficiencies and improving quality.

Carestream's Clinical Collaboration Platform extends the ability to archive, access and share clinical data across the enterprise. When people collaborate effectively around clinical data, they deliver greater healthcare through the Power of Together.

**For more information about the Clinical Collaboration Platform,
contact your Carestream sales representative today
or visit carestream.com/collaboration.**



PHYSICIAN



PHYSICIAN



Access to relevant clinical images for each specialty, in addition to the patient's full medical history from the EMR, helps clinicians work together for **more coordinated care**.



PHYSICIAN



PATIENT



With access to clinical information, exams and reports, patients can help physicians develop more effective evaluation and treatment plans, taking **greater ownership of their own care**.



IT MANAGER



HEALTHCARE EXEC



The ability to manage clinical data holistically gives executives more agility for mitigating risk, improving quality and planning for future needs based on **improved business insight**.



PROVIDER



PAYER



Data-mining relevant information for review in real-time dashboards and other compliance and reporting systems helps ensure data transparency for **tracking quality outcomes**.

A Community of Service and Support

For dependable service, look to our Customer Success Network. We work continuously to improve your imaging performance, help you to innovate as needs change, and make the most of your budget and resources.

Carestream's Customer Success Network surrounds you with a dynamic team of experts, with a single point of entry for easy, customized access to the right people in every situation. You and your patients will benefit from the expertise and best practices only Carestream can deliver – based on thousands of customer engagements worldwide and our 100-year heritage in medical-imaging innovation.



The power of together.

Knowing Matters

In contemporary imaging departments, knowledge is everything. With Vue, you'll know that the issues crucial to your success are being addressed. Vue amplifies the clinical, business and IT value of diagnostic imaging by:

- « Offering greater value and insight as you generate clinically rich reports.
- « Increasing patient engagement and satisfaction with an intuitive patient portal.
- « Controlling costs and streamlining data flow with modular components within the platform.
- « Fostering clinical collaboration without boundaries.

Most important, Vue offers a single, flexible, configurable platform. It lets you make the right investment now – and build on that investment in the future.



carestream.com/collaboration



© Carestream Health, Inc., 2015. CARESTREAM is a trademark of Carestream Health. CAT 300 1050 07/15

Carestream