



*The Surface
Only Tells Part
of the Story.*

CarestreamNDT

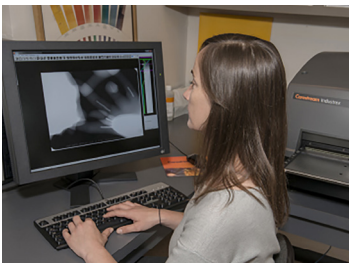
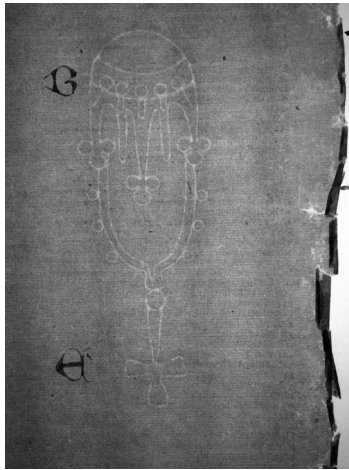
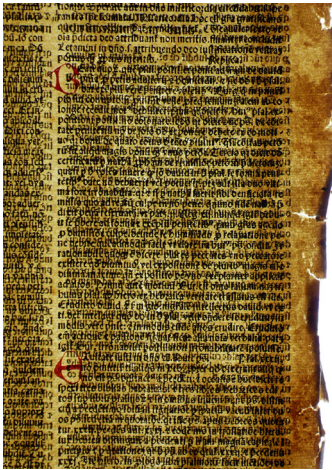


*You Need to
Know What's
Underneath.*

CarestreamNDT

Important pieces of art must be examined in a way that will not only validate their history, but also uncover intricate structural details and information that is essential for their preservation and restoration.

Radiography helps conservators, museums, and universities do just that.



"This technology makes x-radiography a far more immediate and viable method of examination, allowing us to more fully explore the fascinating world of technical art history and documentation. The Carestream CR system has proven to be a valuable asset to our work."

- National Gallery of Canada

"With film, we sometimes needed a dozen over-lapped captures for a single large painting. The Carestream CR system allows us to capture the same information in as little as three shots"

- Dan Kushel, State University of New York Distinguished Teaching Professor, Technical Examination and Documentation.

HPX-1 Plus

Now You Can, More Easily Than Ever Before!

The Carestream HPX-1 Plus Digital Radiography System gives conservators the power they need to see more than with traditional film solutions in a cost-effective manner. More dynamic range for more detailed images. Larger capture sizes (up to 85" plates) that allow for fewer shots. And immediate digital results, with no darkrooms or film processing required.

Dual Layered HEPA Air Filters
feed clean air to the system.

Positive Airflow - Three large fans blow positive air through the unit to keep it cool and to keep contaminants out.

Adjustable PMT & Laser Power - Simple to change PMT and Laser settings allow optimum tuning for the best image possible.

Halogen Erase Lights - Extra bright erase will erase even saturated plates without leaving any ghost images.



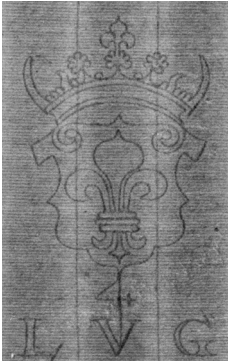
Imaging Plate Flexibility - Accepts bare plates, extra long and custom cut plates. Also accepts rigid cassettes for optimal plate protection. Optional plate carrier can transport plates as small as 1 x 1-inch. (2.5 x 2.5 cm)

Plate Transport - Low Contact design minimizes contact with imaging plates.

Swap Out Service Repair



Touted as being the best service model in the industry, every HPX-1 Plus comes with one full year of Swap Out Service Repair. If your unit goes down during warranty we will ship you a loaner so you can keep working while we work on yours.



Examine More With Carestream's Depth of Information

- The HPX-1 Plus System's digital radiographs include information about the entire depth of an object that other imaging techniques cannot document.
- Reveal hidden watermarks obscured by printed text or images, which permits conservators to accurately date these artifacts. Likewise, researchers can identify structural characteristics of sculptures and vessels to aid in authenticating the source and history of objects and assessing their condition. Cracks, casting flaws and other disfigurements all can be clearly revealed.

Capture More With Larger Plate Sizes and Flexibility

- The system supports large plates up to 14" x 85" a complete study of a painting or large artifact can be achieved with just a few radiographs. This is crucial when you are trying to minimize the time spent handling fragile subjects.
 - Capable of handling single or multiple plates, custom cut sizes (with Plate Carrier), rigid cassettes and long plates (up to 85") without special feed guides.

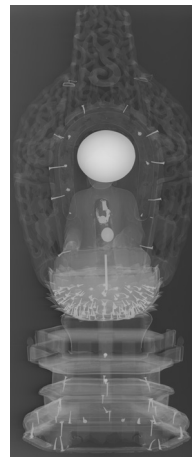


Learn More With Advanced Imaging Software

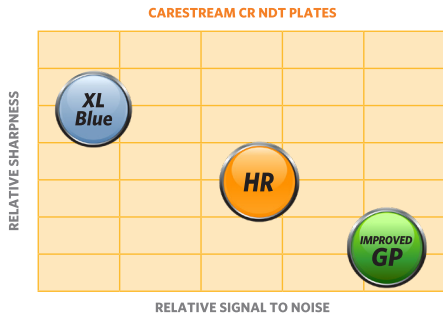
- Examine pieces with more viewing options than light-box methods.
- Easily share images over the network, and a department's capacity to study and learn is improved dramatically.
- Comes with advanced imaging software to inspect images immediately with tools such as an edge enhancement filter, contrast manipulation, image rotation, sizing.

See More With Carestream's Wider Dynamic Range

- View more data to be deciphered in less time and with fewer exposures.
- The increased dynamic range of the images at full resolution is similar to that of most films.
- Advanced optics make it possible to lower exposure while achieving required sensitivity, so work can be performed at higher light levels than film for safer handling of fragile artifacts.



Flex GP, Flex HR and Flex XL Blue Digital Imaging Plates



Our Digital Imaging Plates offer the flexibility of film without the need for wet processing. This lets you capture and read images quickly and easily, both in the field and in the lab. You can optimize the images if needed and store or share them digitally. And, they work with the Carestream INDUSTREX HPX-1 Plus Digital System.



General Purpose

The general purpose imaging plate is sufficient for shots where fine detail is not required. It requires the lowest dose, which helps productivity. The plate is best utilized for high energy X-ray or Cobalt applications.



High Resolution

The high resolution imaging plate is best for applications where the best image quality is required. The plate produces high quality images, and has the best detectability (contrast sensitivity) in the industry. The plate can be used for general X-ray, and Iridium or Selenium applications.



XL Blue

The XL Blue imaging plate has the highest resolution, and is typically used for low energy X-ray applications and system classification. The plate is used when fine detail is required and requires the most dose.

If you haven't made the move to digital yet, contact your local Carestream representative or email artconservation@carestream.com. Our Digital Radiography experts will help you see what you need to see, more easily than ever before!