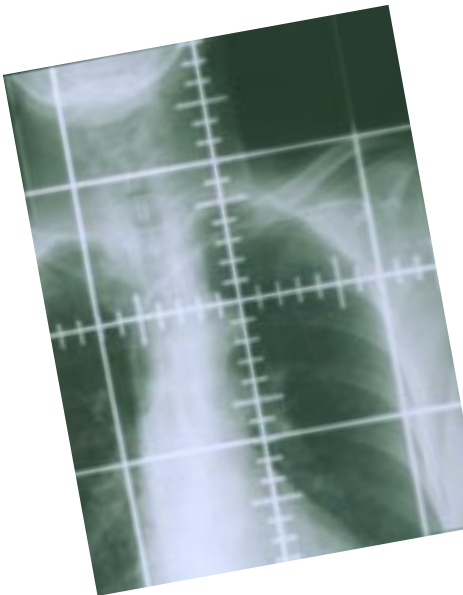




Oncology Imaging

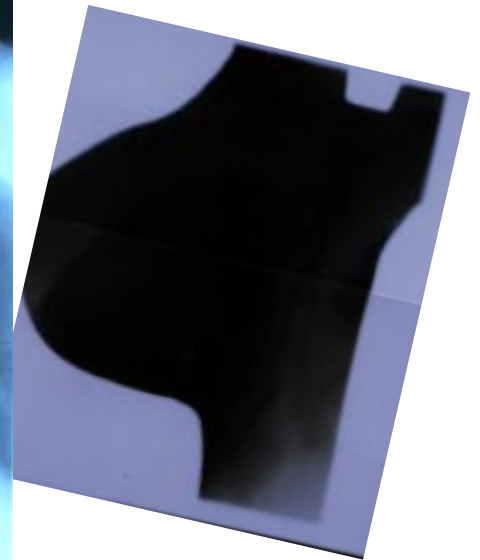
Because you care to
see more



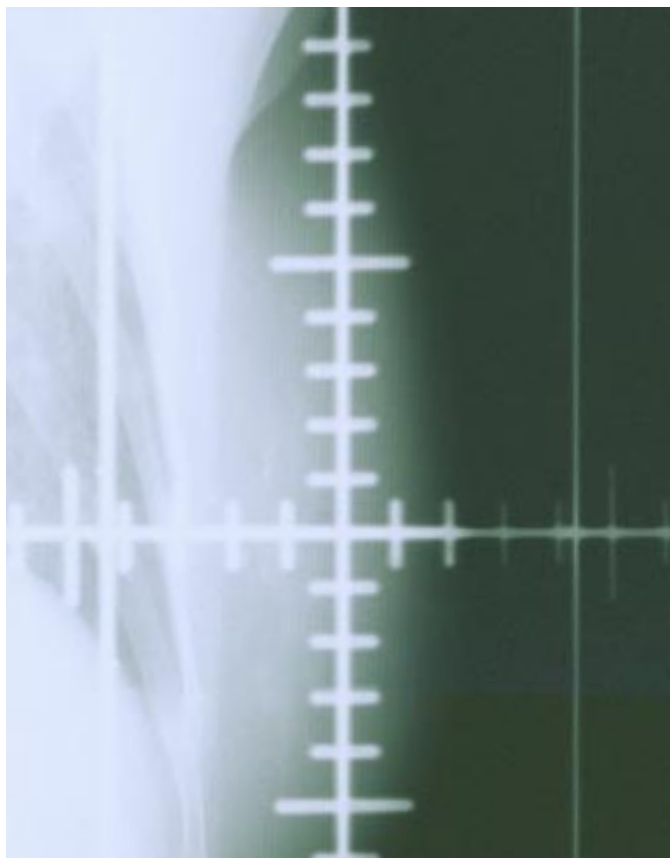
KODAK Simulation Film
for Radiation Oncology



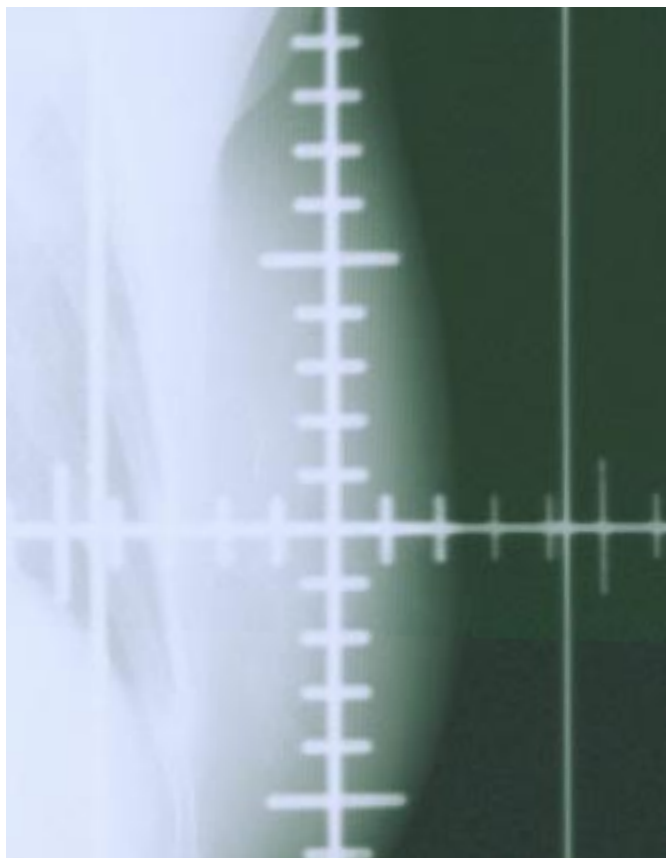
KODAK EC-L Film System



KODAK EC-V
Film System



Conventional Film with KODAK LANEX Regular Cassettes 70 kV @ 15 mAs



KODAK Simulation Film with KODAK LANEX Regular Cassettes 70 kV @ 10 mAs

KODAK Simulation Film

See more in your simulation images with fewer worries about exposure techniques

Wide exposure latitude means:

- Better visualization of the full range of anatomical landmarks
- Quality images even when exposure settings are difficult to control

Kodak simulation film can help you see:

- Skin line and the chest wall on breast simulations
- Soft tissues of the neck and the bony details of the cervical spine
- Lung markings and the heart and mediastinum

Kodak simulation film is compatible with:

- Your current processing environment
- Cassettes with green-light-emitting screens, such as Kodak Lanex cassettes





Capture remarkable images with products designed specifically for oncology imaging

Unlike products adapted from diagnostic imaging, these Kodak films, screens, and cassettes are specifically designed for oncology imaging.

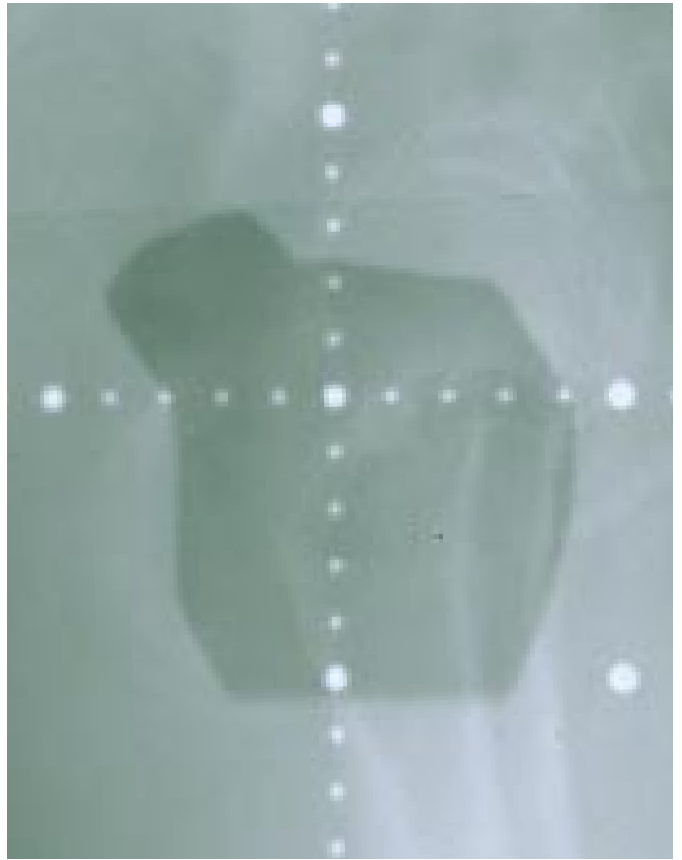
The result is truly remarkable images, giving you the opportunity to enhance patient care, increase productivity, and make more effective use of treatment time and resources.

This complete product portfolio reflects Kodak's understanding of—and commitment to—radiation oncology. An understanding and commitment that sets Kodak apart from the rest.

For more information, contact your distributor of Kodak products or regional Kodak Oncology Manager. Or visit our web site.



Conventional Film with KODAK X-OMATIC L cassette 6 MV 4 + 4 MUs



KODAK EC Film with EC-L Fast Cassette 6 MV 2 + 6 MUs

KODAK EC-L Film System

Sets the **standard** for portal localization

The Kodak EC-L film system consists of:

- Kodak EC film
- Kodak EC-L oncology cassettes

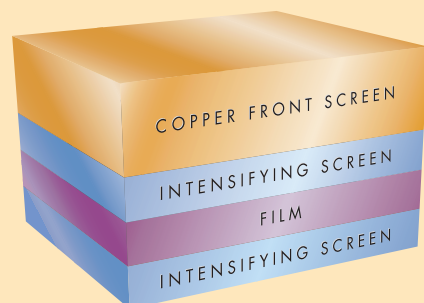
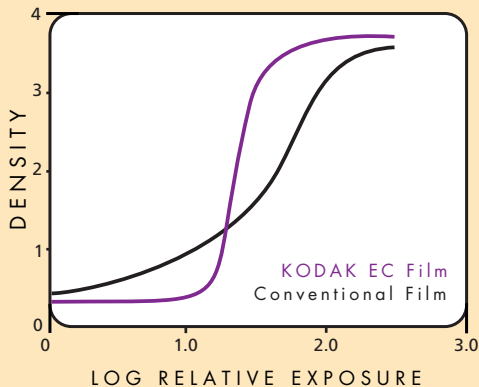
3X more contrast than conventional portal localization systems means:

- Easily differentiated bony structures
- Improved treatment field verification
- More confident beam positioning



Winner of the R&D 100 Award
for technological innovation

Harness the power of phosphor intensifying screens and advanced emulsion technology



High-contrast Kodak EC film in Kodak EC-L oncology or Kodak EC-V verification cassettes, which incorporate Kodak intensifying screens.



KODAK X-OMAT V Film with KODAK X-OMATIC V Radiation Therapy Cassette Tumor Dose: 90 cGy (109 MUs)



KODAK EC Film with KODAK EC-V Verification Cassettes Tumor Dose: 90 cGy (109 MUs)

KODAK EC-V Film System

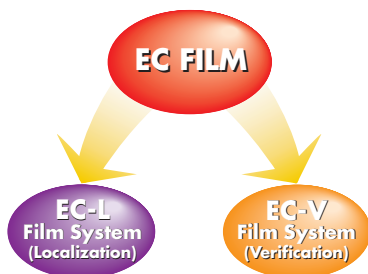
Improve productivity with superb portal verification

The Kodak EC-V film system consists of:

- Kodak EC film
- Kodak EC-V verification cassettes

Exposing film with the actual treatment beam means:

- Higher productivity and patient throughput via reduced treatment time
- Greater patient comfort due to less time on table
- Treatment accuracy is documented
- Excessive patient motion is recorded



One great film—two great systems.

Save 2 minutes per portal film

with Kodak EC film and Kodak EC-V verification cassettes

Step	Verification	Localization
Set up patient, exit room	4 min., 30 sec.	4 min., 30 sec.
Program console for filming	Step eliminated	↑
First exposure	Step eliminated	
Enter room	Step eliminated	↓
Remove blocks	Step eliminated	
Exit room	Step eliminated	
Second exposure	Step eliminated	
Enter room	Step eliminated	↓
Replace blocks	Step eliminated	
Remove cassette	Step eliminated	
Exit room	Step eliminated	↓
Complete treatment	30 sec.	
Total treatment time:	5 minutes	7 minutes

Because you care to **see
more**



KODAK Portal Pack Film for Localization Imaging (PP-L)

Load and unload conventional portal imaging cassettes in ambient light

Lighttight protection for individual PP-L films
to increase productivity:

- Kodak X-Omatic L radiation therapy cassettes can be loaded and unloaded in roomlight
- No need to carry cassettes to and from the darkroom

Order Kodak X-Omat V film

in lighttight Kodak ready pack envelopes for dosimetry and quality-assurance applications.

Visit our **web site**



Try the **KODAK EC Film online demo!**

www.kodak.com/go/oncology

- Compare images through our online demo
- Read technical overviews and access abstracts
- See tips and techniques for optimizing your images
- Contact us!



KODAK, LANEX, X-OMAT, and X-OMATIC are trademarks. Printed on recycled paper containing 10% post-consumer waste fiber, using soybean-based inks. Printed in U.S.A. 12/98
© Eastman Kodak Company, 1998
N2-103 CAT No. 844 1222

Health Imaging Division
EASTMAN KODAK COMPANY
Rochester, New York 14650
USA
Toll free: 1-877-297-5307 ext. 22
Fax: 1-800-374-1871

KODAK CANADA INC.
Toronto, Ontario M6M 1V3
CANADA
Toll free: 1-800-440-3336 ext. 33394

Outside the U.S. or Canada, please
contact your local Kodak company.