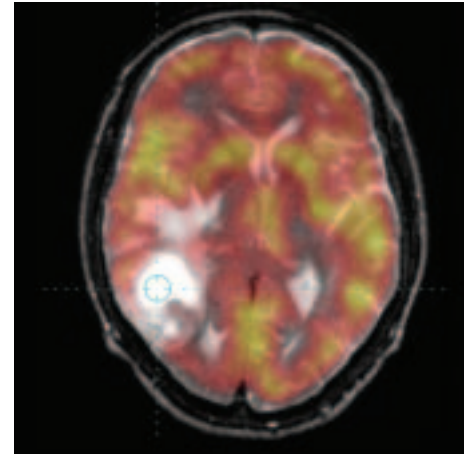


Image Fusion Suite

Fast and fully automatic one click image fusion is now available.

Fully integrated into KODAK CARESTREAM PACS

Image Fusion, powered by Fusion7D™, is designed to be run from your current clinical workstation, saving you time, space, and money. For a more productive future, Fusion7D makes for an intelligent choice.

The logo for Fusion7D, featuring the text "Fusion7D™" in white on a green speech bubble background.

Affordable, site wide, diagnostic quality PET/CT imaging

In the thousands of worldwide healthcare enterprises using PET/CT, it is now possible to install affordable diagnostic quality PET/CT reading and review software across the full site. Whether you acquire your own PET/CT images, use a mobile system, or outsource to other centers, Fusion7D makes PET/CT tools available wherever you may need them.

Application support for MRI/PET imaging

Combining MRI with PET can improve diagnostic information for a range of neurological and oncological disorders such as epilepsy, breast cancer, brain tumor and many others. Fast and fully automatic, one click MRI/PET fusion is available with Fusion7D.

Available in a range of configurations

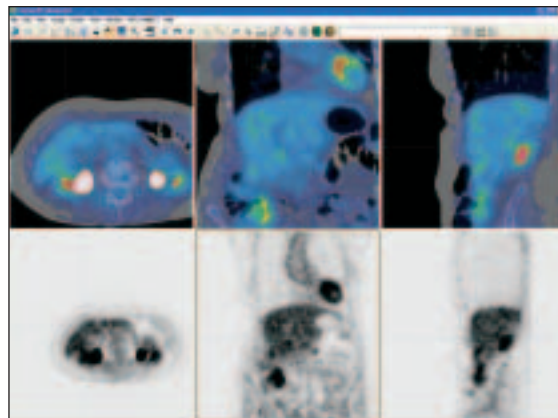
Fusion7D is available in a range of configurations, each one designed for a different need and price point. Whether you're looking for fully featured PET/CT visualisation, general fusion capabilities, or advanced patient motion assessment tools, Fusion7D's fully integrated solution provides the flexibility your enterprise needs.

Advantages at a glance

- ▶ Fully integrated into KODAK CARESTREAM PACS
- ▶ Affordable, site wide, diagnostic quality PET/CT imaging
- ▶ Application support for MRI/PET imaging
- ▶ Available in a range of configurations

The logo for Kodak Carestream PACS, featuring the word "Kodak" in red and "Carestream PACS" in black, set against a background of a blue and yellow wave.

Kodak Carestream PACS Image Fusion Suite



Features Available	Viewer Edition	Basic Edition	Standard Edition	Advanced Edition
Overlay fusion display with user adjustable transparency control	✓	✓	✓	✓
Fully triangulated multiple volume visualization	✓	✓	✓	✓
Magnify, zoom, pan & navigate controls	✓	✓	✓	✓
Range of color maps	✓	✓	✓	✓
Window & level presets	✓	✓	✓	✓
Point SUV quantification	✓	✓	✓	✓
MIP and Fusion MIP views	✓	✓	✓	✓
Landmark and drag'n'drop registration		✓	✓	✓
Export registered data as a derived data modality or secondary capture		✓	✓	✓
Fully automatic rigid registration			✓	✓
2D & 3D ROI quantification including SUV quantification			✓	✓
Freehand, point by point, and SUV based region of interest			✓	✓
Automatic non-rigid (deformable) registration				✓
Patient motion assessment tools				✓
Burn to CD Viewer	✓	✓	✓	✓

Option ✓ Included ✓

Kodak

Licensed Product

Carestream Health, Inc.
150 Verona Street
Rochester, NY 14608

More information

To learn more about KODAK CARESTREAM PACS, contact your Carestream Health representative, or call 1-877-865-6325, ext. 655.

➔ www.carestreamhealth.com

Carestream
HEALTH

The Innovation Powering **Kodak** Health Products