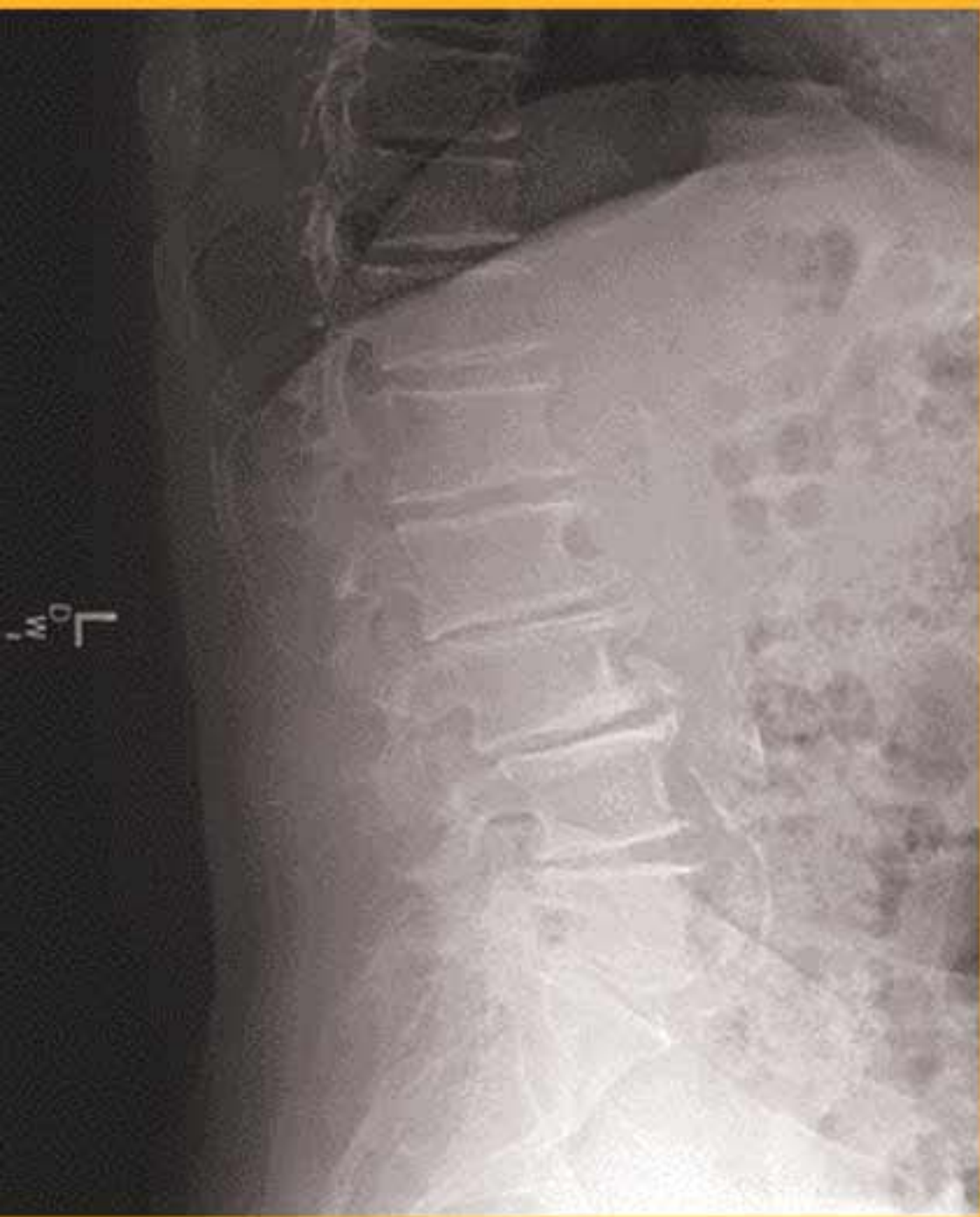




**KODAK DIRECTVIEW
EVP Software**

Now view high-contrast *and*
wide-latitude information
in a single CR image





Advanced image processing software extends image latitude without loss of detail contrast

Enhance CR image quality as never before when Kodak DirectView EVP software is used with the Kodak DirectView CR 800 system.

It's the best of both worlds—this optional image processing software increases latitude and preserves the contrast of image detail. And all of the original image data are used and retained during image processing and enhancement.

How it works

Image data are divided into low- and high-frequency component images.

The low-frequency image component's contrast is reduced to increase latitude, and the high-frequency image component is enhanced to preserve its detail. Then the images are combined, and the results are exceptionally high-quality images that provide:

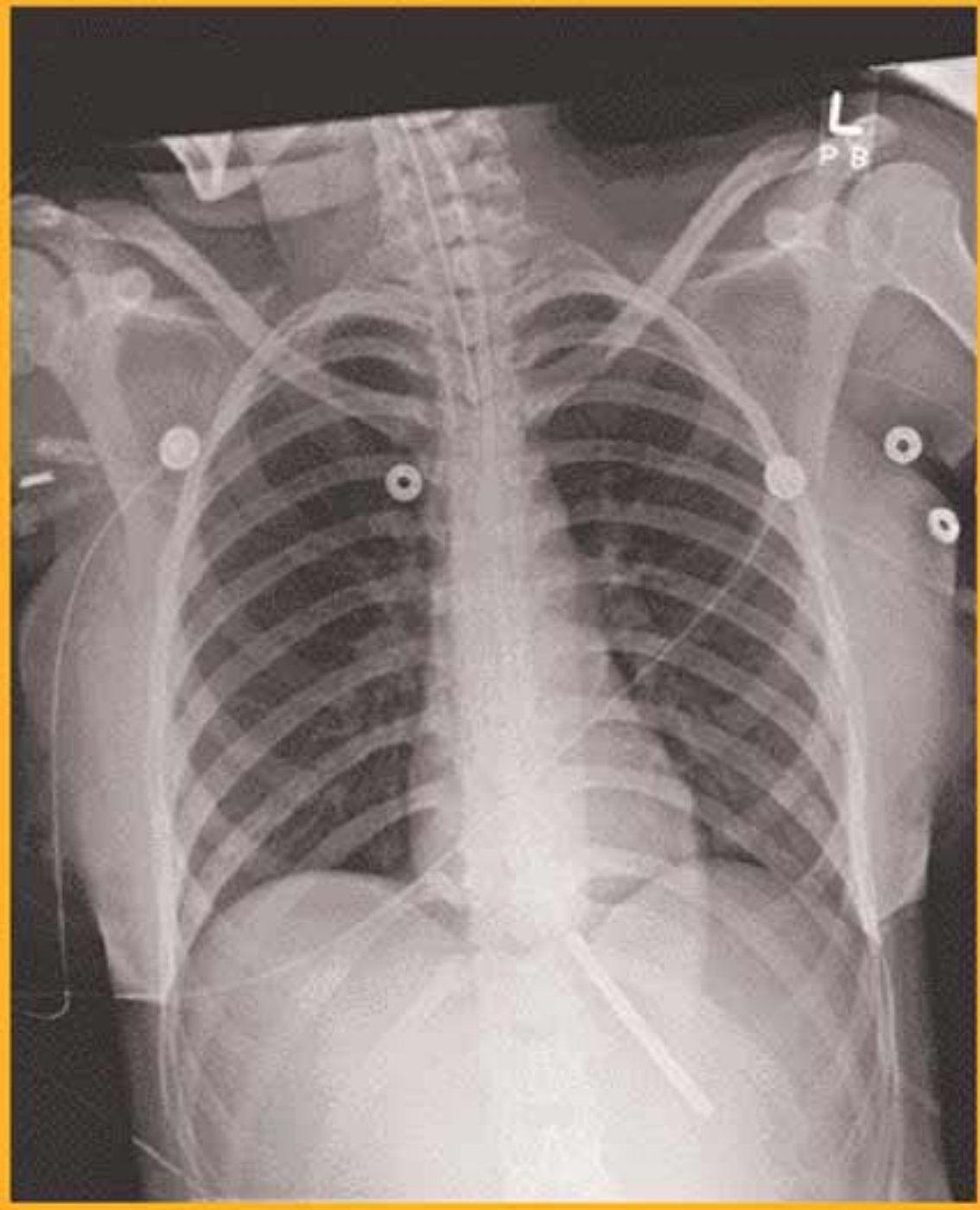
- Better visualization of anatomy, especially in traditional problem areas such as trauma lateral cervical spine images.
- An opportunity to reduce the radiologist's reading time.

Increase diagnostic satisfaction

In independent ratings by 10 Board-certified radiologists, covering 14 examination types, this software's images *increased diagnostic satisfaction in 76% of all cases studied.*

The study concluded that EVP:

- Eliminates loss of detail in commonly overpenetrated and underpenetrated areas.
- Reduces the need to window/level images presented on workstation displays.



- Provides better anatomical context.
- Provides robust automatic tonescale processing.

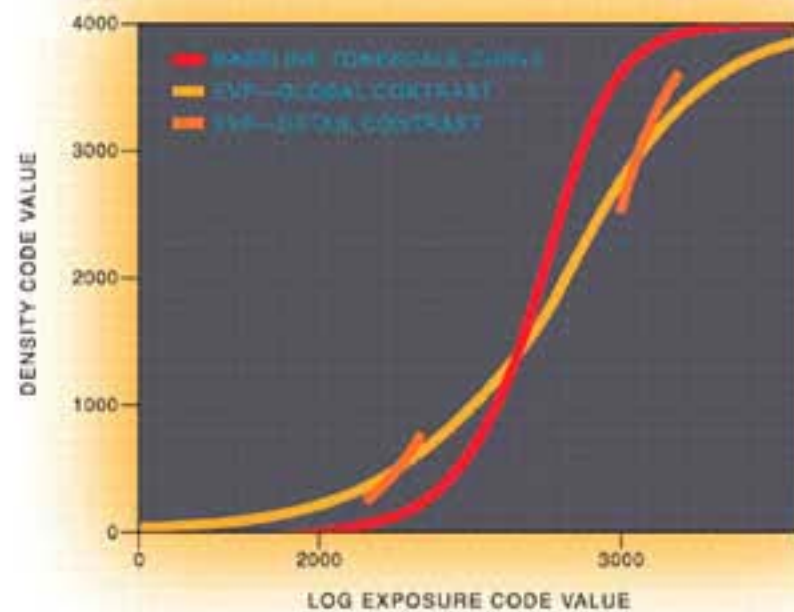
For complete study information, contact your Kodak account manager, or call 1-877-865-6325, ext. 227 and request a copy of Kodak publication M1-308.

It's easy to use

When you use this software, you will achieve optimal images without any intervention. But if you want to enhance the images even further, all it takes is one simple adjustment.

Available now

Kodak DirectView EVP software is available for use on all Kodak computed radiography systems. Contact your Kodak account manager for details.



This illustration compares results of Kodak DirectView EVP software with results from Kodak DirectView image processing software.

The red line is the tonescale curve of the baseline (Kodak image processing) software. As shown, the EVP software lowers the overall image contrast (yellow curve) while preserving the contrast of image detail at each density (orange lines)—for optimal results.



EVP
 OFF GAIN



EVP
 1.50 GAIN



EVP
 3.00 GAIN

The EVP software provides optimal images without any user intervention. However, if further enhancement is desired, all it takes is one simple adjustment. All the original image data are used and retained during image processing and enhancement.

Learn more

For more information about Kodak EVP software, or to order, contact your Kodak account manager. Or call 1-877-865-6325, ext. 227.

Information is also available at www.kodak.com/go/health.

www.kodak.com/go/health

Health Imaging Division
 EASTMAN KODAK COMPANY
 Rochester, New York 14650

KODAK CANADA INC.
 Toronto, Ontario M6M 1V3
 CANADA

Outside the U.S. or Canada, please contact your local Kodak company.

